

Allegheny Plateau Invasive Plant Management Area

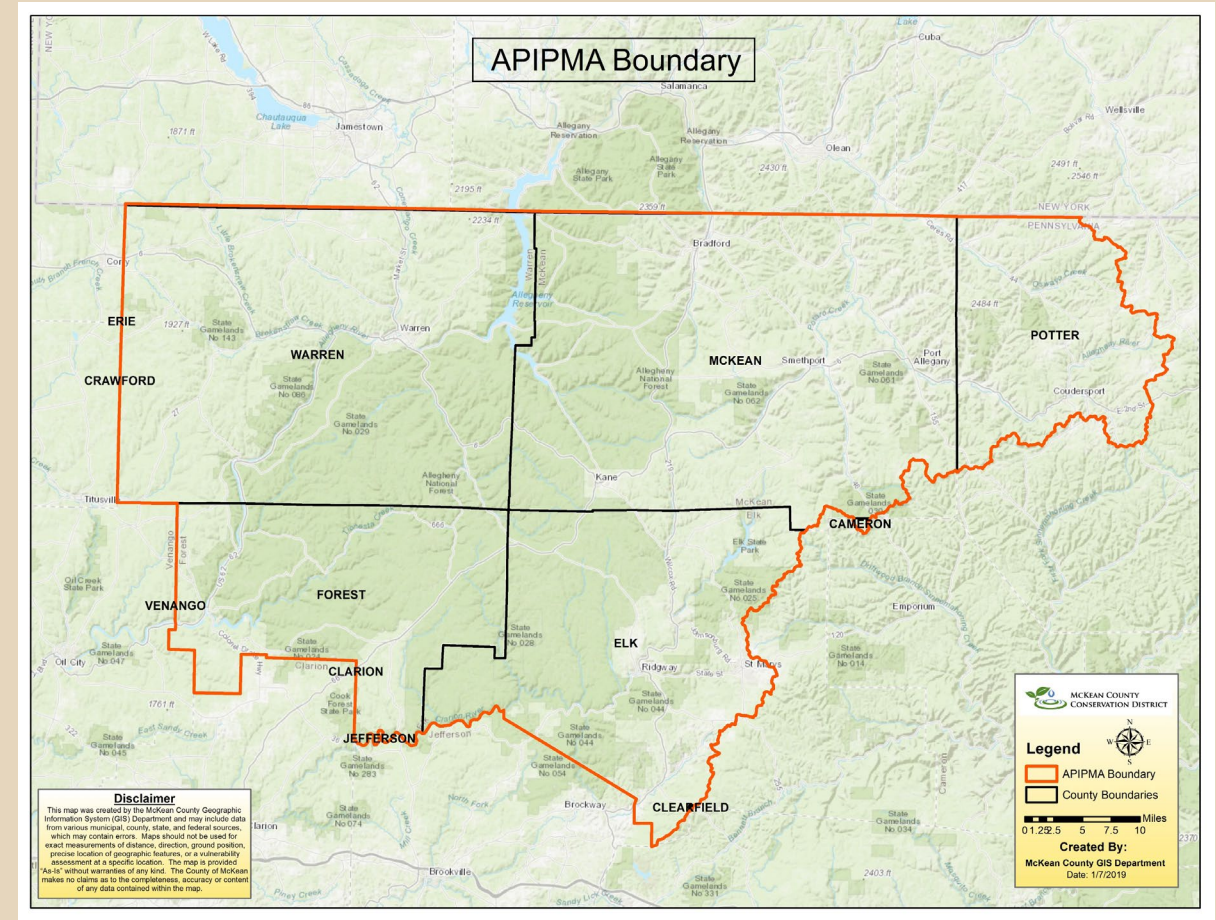


McKean County Conservation District



About APIPMA

- Invasive plant cooperative between stakeholders- including agencies, private forest companies, and community groups
- In addition to ecological considerations, the boundaries for APIPMA's region include areas where additional individuals and organizations have committed to be active in the establishment and activities of the cooperative



Group structure

Allegheny Plateau Invasive Plant Management Area 5-yr Strategic Plan (February 2018 through December 2022)

APIPMA MISSION STATEMENT

Implement a comprehensive, cooperative approach across boundaries to address the threats of invasive species to the lands and watersheds within the boundaries of APIPMA.

Approach: The most cost-effective way to address invasive species is to prevent them from reaching the cooperative region in the first place. If, despite prevention efforts, invasive species reach the APIPMA, early detection programs can help locate and eradicate those invasive species before they become widely established. Education and awareness extending to the general public will assist efforts to locate and inventory species as part of early detection and otherwise. If invasive species elude early detection and establish and spread in the APIMA or are part of a previous invasion, control and management programs to monitor and minimize their negative impacts to the economy and environment will be necessary, but these efforts can be very costly. The sooner we act the more effective and less costly our efforts will be.

Plan Implementation:

This plan will be considered a working document and will be reviewed and, if necessary, revised annually. Refer to the APIPMA Biennial Workplan for the task implementation timeline.

It is also highly recommended that APIPMAs utilize steering committees, standing sub-committees and ad hoc sub-committees. Steering committees should represent the partners in the APIPMA. Standing sub-committees are formed to address a specific issue and usually continue as long as needed (e.g. animal EDRR subcommittee, mapping/monitoring subcommittee, other). Ad hoc sub-committees are a great tool to get a defined project completed in a defined time. For example, organize an ad hoc sub-committee to rank plants for prioritized control efforts. This group would complete the project, report back to the steering committee, and then disband. This is an efficient and productive technique to divide up the tasks and get engagement from partners that may not have time for a steering or standing sub-committee. It also provides documents and products to all partners with ownership to APIPMA.

Partners and steering committee created a strategic plan and two-year workplan

- Provided a timeline to follow when group first started
- Input from partners

ALLEGHENY PLATEAU INVASIVE PLANT MANAGEMENT AREA WORKPLAN

This two year workplan is developed from the APIPMA five year Strategic Plan Goals & Objectives to accomplish certain action steps for 2018-2020. The work plan does not include tasks for all action steps from the 5-year strategic plan.

Goal 1: Create, strengthen and sustain Allegheny Plateau Invasive Plant Management Area.

Objective: Form and sustain a strong partnership through APIPMA

1. Develop basic organizational structure for APIPMA and determine geographic boundaries.

Action Step	Who will do it?	By When?	Status
Coordinate meetings with enthusiastic regional partners to initiate and participate in APIPMA efforts.	Steering Committee	Bi-Annually	Ongoing
Create steering committee and subcommittees and revise as appropriate to assist with project specific efforts			Steering committee established 2018 Subcommittee under development for GIS database /monitoring and mapping
Establish geographic boundaries, and solicit feedback from partners on a regular basis	Steering Committee	2019	Boundaries established 2018 Feedback ongoing

2. Sustain and strengthen APIPMA

Action Step	Who will do it?	By When?	Status
APIPMA partner meetings at least twice per year or quarterly as needed- April and Octobers; Rotate locations across region; plan in advance	Steering Committee- Maddie will schedule	Annually	Ongoing
APIPMA steering committee meetings at least every two months; rotate locations	Steering Committee members	Annually	Ongoing
Develop work plan with APIPMA partners. Incorporate funded grant activity into annual work plans when appropriate.	Steering Committee	Biennially	Two Year Workplan completed
Create a short annual report; starting Dec. 2018.	Lead Partner	Annually	Completed

Partners

Over 50 partnering agencies

- Full partnership meeting in the spring and fall
- Smaller steering committee meets more often

Key partners:

- Allegheny National Forest
- Kane Parks Commission
- DCNR
- PGC
- Penn State Extension
- Collins Pine - Kane Hardwood
- Forecon, Inc.
- Western Pennsylvania Conservancy
- Forest Landowner's Associates

Conservation District role

Initial cooperation between MCCD and PSU Extension

- Dr. Kimberly Bohn (Penn State Extension, Now Penn State Mount Alto) previously worked with CISMAs in Florida
- Gather additional partners
- Utilized CWMA cookbook
- Connect with partners
- Provide leadership for the group
- Fiscal agent for grants
- House project coordinator—initially as intern, now full-time staff member

[Link: https://bugwoodcloud.org/mura/mipn/assets/File/CWMACookbook2011.pdf](https://bugwoodcloud.org/mura/mipn/assets/File/CWMACookbook2011.pdf)

Funding

- **National Fish and Wildlife Foundation ‘Pulling Together’**
 - Funded Project Coordinator (Intern) salary
 - Education and outreach
- **Challenge Cost Share Agreement with the US Forest Service ANF**
 - Funds salaries and labor
 - Travel
- **PA Department of Agriculture Rapid Response**
 - Funds two prioritized invasive plant treatment projects
 - Japanese knotweed (Tionesta watershed) and goatsrue (APIPMA region)

Projects

High school education:

Kane Area High School

- Learned ID, ecology, mapping
- Invasive plant mapping
- Management, removal on KARE for Kane day

Otto-Eldred Junior High School

- Learned ID, ecology, mapping
- Invasive plant mapping



Kane students during invasive plant work session

Projects continued

University education:

University of Pittsburgh @ Bradford

- Training on plant species
- Plant mapping using iMapInvasives
- Field session to ID and map
- Volunteer college student recruitment and provides students with field skills



Projects continued

Training professionals:

- Ecology, identification, management and control methods
- iMapInvasives training
- PennDOT, municipalities, other agencies
- Pesticide update credits for license holders



Projects continued

Public education:

- Ecology, identification, management and control methods
- iMapInvasives training
- Quizzed on identifying invasive plants



Mapping projects

Data collected by interns, coordinator, GIS Dept., students, and volunteers:

Mapped APIPMA region for goatsrue infestations

- Interns collected data, including location, density, and photos
- Collected approx. 50 acres goatsrue data

Mapped areas of Tionesta Watershed for Japanese knotweed

Mapped section of Mt. Jewett/Kinzua Bridge Trail for invasives

- ▶ **iMapInvasives**
- ▶ **ESRI Collector app**
- ▶ **ESRI QuickCapture**



Other projects

Assisting McKean County municipalities with obtaining a PA pesticide applicator's license

- McKean, Cameron, Elk County

APIPMA serves on Allegheny Forest Health Collaborative – Non Native Invasive Plant Workgroup



Summary

- ▶ Conservation Districts could help with CISMAS
- ▶ Conservation Districts within each county already provide outreach on invasive species
- Familiar with potential partners
- Able to utilize grant funds



Contact information:

Maddie Stanisch

McKean County Conservation District

mmstanisch@mckeancountypa.org

(814) 887-4020



McKEAN COUNTY
CONSERVATION DISTRICT