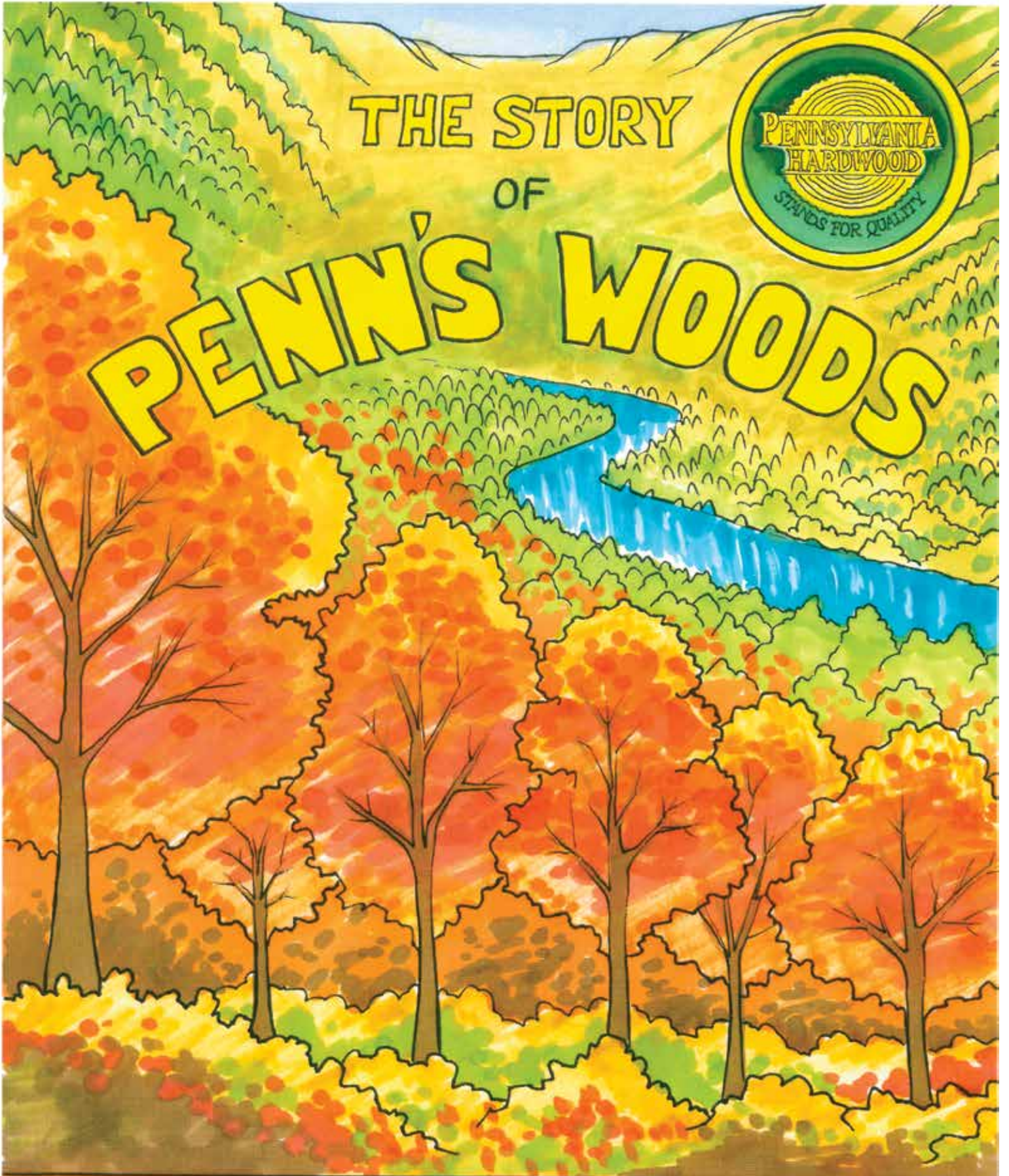


THE STORY
OF



PENN'S WOODS



BY
CARL A. PIERCE

Pennsylvania has a wonderful forest resource. This coloring book will help you understand “Penn’s Woods” forest history and how today Pennsylvania has the largest hardwood forest in the United States. With nearly 17 million acres of forest, the forest provides many benefits to our environment while it is growing, and provides an environmentally friendly and renewable resource for making the products we need. The forest products industry in Pennsylvania employs nearly 66,000 people in forestry and manufacturing wood products, furniture and paper. It is important that we keep our forests healthy and growing, but also that we harvest the wood so we have the wood products we need and the trees we need for future generations.

The Pennsylvania Department of Agriculture through the Pennsylvania Hardwoods Development Council promotes sustainable forest management of our forest resource, providing the wood needed today and assuring a growing forest for the future. The Council also offers the Pennsylvania WoodMobile, a traveling educational exhibit on the forest and forest products industry. For more information, contact the council.


Pennsylvania Hardwoods Development Council
Pennsylvania Department of Agriculture
2301 N. Cameron Street, Room 308
Harrisburg, PA 17110
Tel: 717-772-3715
Fax: 717-705-0663
hardwoods@pa.gov
www.agriculture.pa.gov

HI, I'M
WILLIAM PENN.

KING CHARLES OF ENGLAND
GAVE ME THE LAND THAT
WOULD LATER BECOME
PENNSYLVANIA IN 1681.

PENNSYLVANIA IS THE
ONLY STATE NAMED FOR
IT'S FOREST!

"SYLVANIA" IS A LATIN
WORD MEANING "WOODS."
OUR STATE MEANS
"PENN'S WOODS".
I AM HONORED.

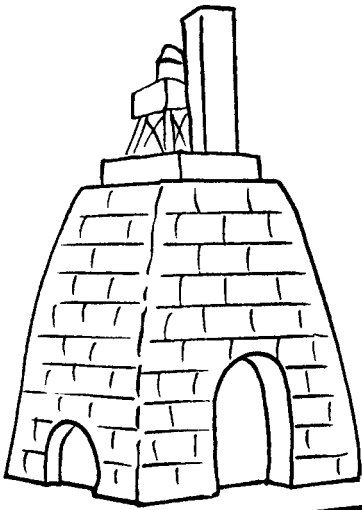


AT ONE TIME,
PENNSYLVANIA HAD LARGE
STANDS OF SOFTWOOD
FOREST MADE UP OF
EASTERN HEMLOCK,
WHITE PINE, RED SPRUCE,
EASTERN RED CEDAR AND
OTHER CONIFEROUS TREES.

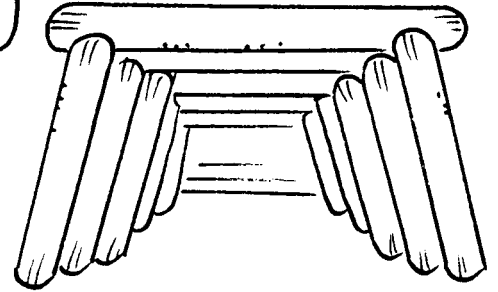
CONIFEROUS TREES
PRODUCE THEIR SEEDS
IN CONES AND THEIR
LEAVES ARE NEEDLE-LIKE.

SOME OF PENNSYLVANIA'S FORESTS WERE CUT TO CLEAR LAND FOR FARMING, BUILD HOMES AND BARN, PROVIDE FIREWOOD, AND BUILD THINGS LIKE FURNITURE, BARRELS, WAGONS, AND SHIPS.







1850-1910




PENNSYLVANIA'S
FOREST HELPED
BUILD OUR NATION!

WE HARVESTED OUR TREES TO BUILD RAILROAD
TIES AND COALMINE TIMBERS, AND TO MAKE
CHARCOAL AS FUEL FOR OUR IRON FURNACES AND
STEEL MILLS. THE BARK OF OUR STATE TREE,
EASTERN HEMLOCK, WAS A SOURCE FOR TANNIC
ACID USED IN OUR LEATHER TANNERIES.









BECAUSE OF ALL THE CUTTING,
SUNLIGHT HIT THE GROUND AND
NEW HARDWOOD TREES GREW.



TODAY, PENNSYLVANIA HAS
A LARGE HARDWOOD FOREST
MADE UP OF RED MAPLE,
BLACK CHERRY, RED OAK,
WHITE OAK, SUGAR MAPLE,
POPLAR, WHITE ASH, BIRCH,
BEECH, HICKORY, AND OTHER
DECIDUOUS TREES.

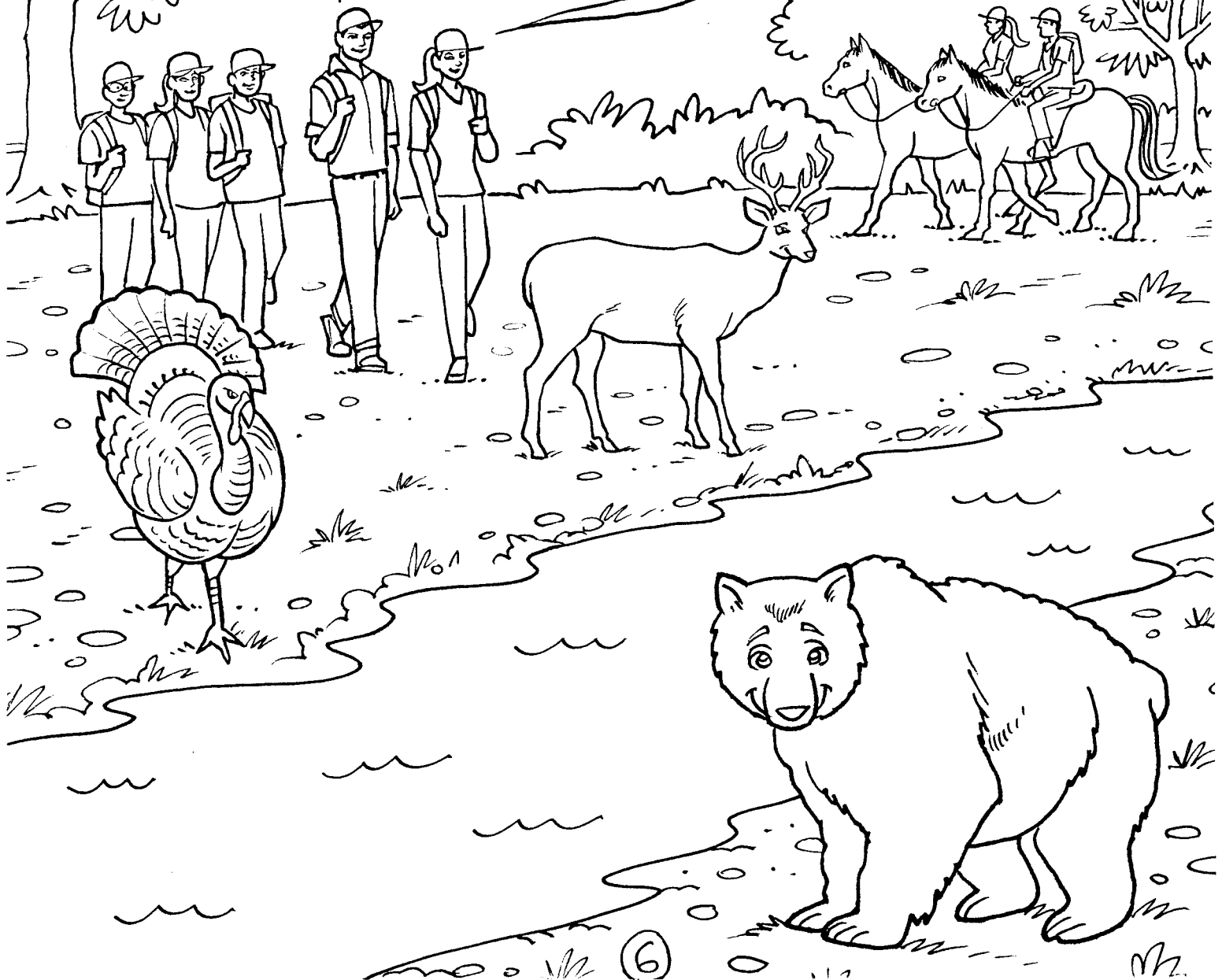


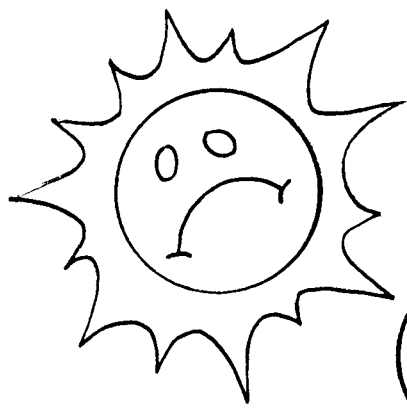
DECIDUOUS TREES PRODUCE
THEIR SEED FROM A FLOWER,
AND USUALLY HAVE BROAD
LEAVES THAT DROP IN THE FALL.

PENNSYLVANIA'S FOREST IS BEAUTIFUL.

IT PROVIDES A PLACE FOR RECREATION, HABITAT FOR OUR WILDLIFE, AND CLEAN AIR FOR US TO BREATHE.

IT ALSO PROTECTS OUR WATERSHEDS.





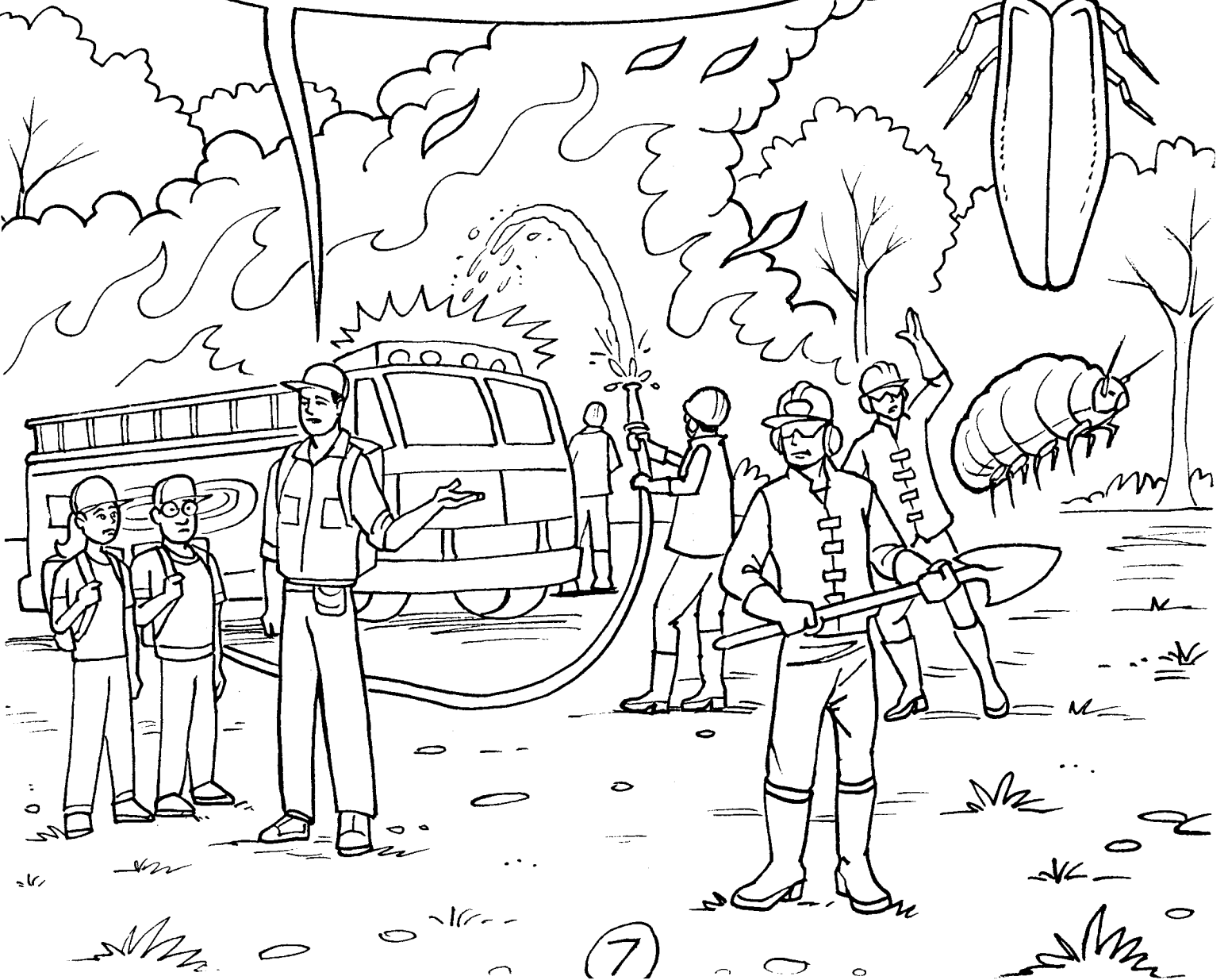
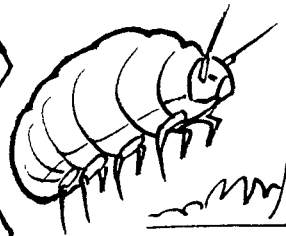
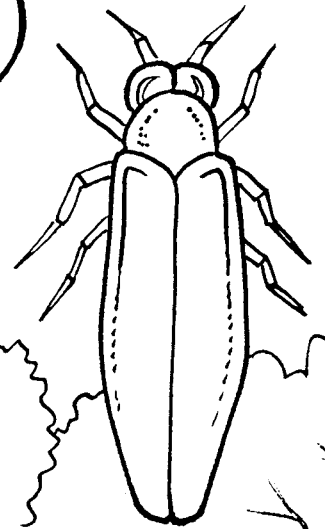
FORESTERS HELP PROTECT
OUR FORESTS FROM:

▷ INSECTS LIKE THE
SPOTTED LANTERNFLY
EMERALD ASH BORER
HEMLOCK WOOLLY ADELGID

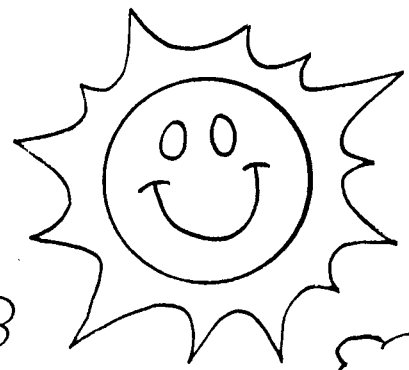


▷ DISEASES LIKE CHESTNUT BLIGHT,
SUDDEN OAK DEATH, DUTCH ELM DISEASE

▷ FOREST FIRES



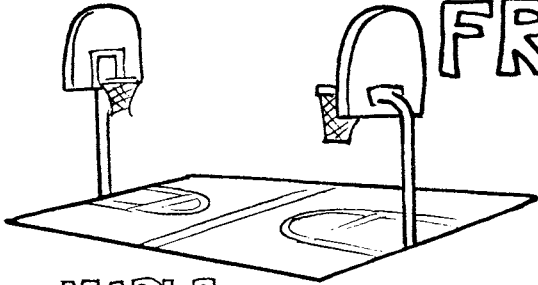
FORESTERS ALSO HELP LANDOWNERS CARE FOR THEIR FOREST. JUST LIKE A GARDEN, A FOREST NEEDS TO BE "WEEDED" OR THINNED TO KEEP IT HEALTHY AND PRODUCTIVE.



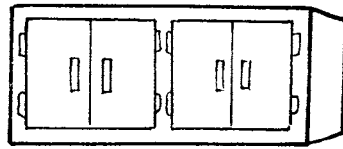
FORESTERS ALSO HELP DETERMINE WHEN TREES SHOULD BE HARVESTED AND WHAT TREES SHOULD BE CUT TO KEEP A HEALTHY FOREST GROWING.



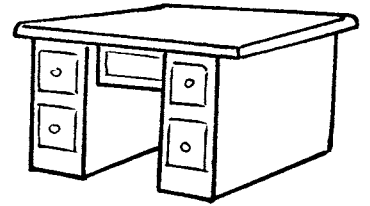
PRODUCTS MADE FROM TREES



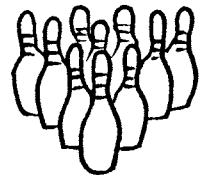
MAPLE



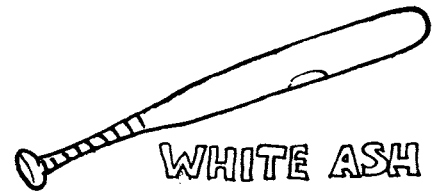
RED OAK



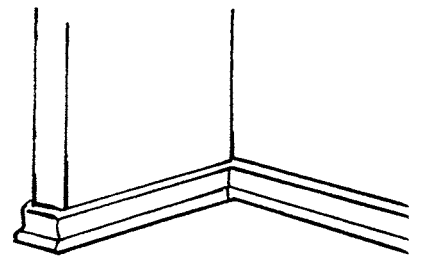
BLACK CHERRY



HARD MAPLE



WHITE ASH

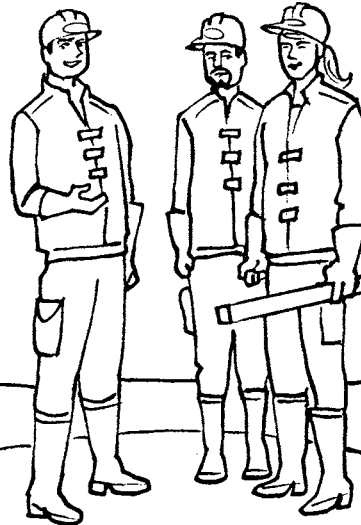


POPLAR

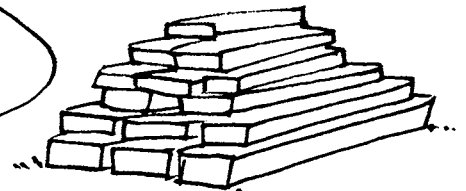
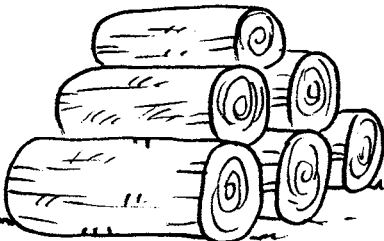
HARDWOOD TREES THAT ARE HARVESTED IN PENNSYLVANIA'S FOREST PROVIDE LUMBER FOR PRODUCTS SUCH AS FURNITURE, FLOORING, KITCHEN CABINETS, SPORTS EQUIPMENT, AND FIBER FOR MAKING PAPER.

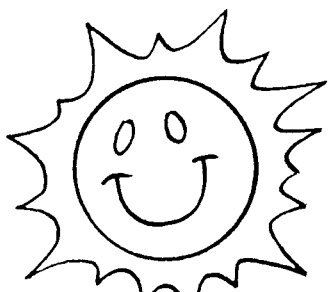


SAW
MILL



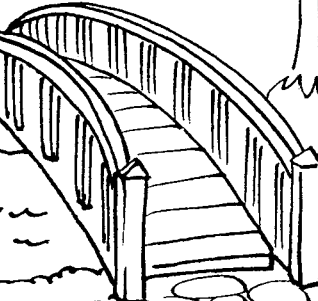
PAPER
MILL






USING SUSTAINABLE FOREST MANAGEMENT PRACTICES, LOGGERS HARVEST TREES IN THE FOREST.

THEY WILL BE CAREFUL TO PROTECT THE FOREST SOIL FROM EROSION. THEY WILL SAVE TREES THAT ARE HOMES TO WILDLIFE. THEY WILL REMOVE TREES THAT ARE DISEASED OR DAMAGED BY STORMS. THEY WILL RESEED THE ROADS AND LANDINGS THEY BUILD WITH GRASS.






WITHIN A FEW MONTHS, THOUSANDS OF HARDWOOD TREES WILL BE GROWING THROUGH NATURAL REGENERATION IF THE HARVEST IS DONE PROPERLY.

TREES WILL SPROUT FROM THE SEEDS ALREADY ON THE GROUND WHEN SUNLIGHT REACHES THE FLOOR OF THE FOREST. NEW TREES OR SEEDLINGS WILL ALSO GROW FROM THE STUMPS AND ROOTS.

THE TOPS OF THE TREES, CALLED SLASH, ARE LEFT IN THE FOREST TO ROT, PROVIDING NUTRIENTS FOR NEW TREES TO GROW. THE SLASH WILL ALSO PROTECT THE NEW SEEDLINGS FROM HUNGRY WHITETAIL DEER. TOO MANY DEER CAN ALSO OVERWHELM A HEALTHY FOREST.

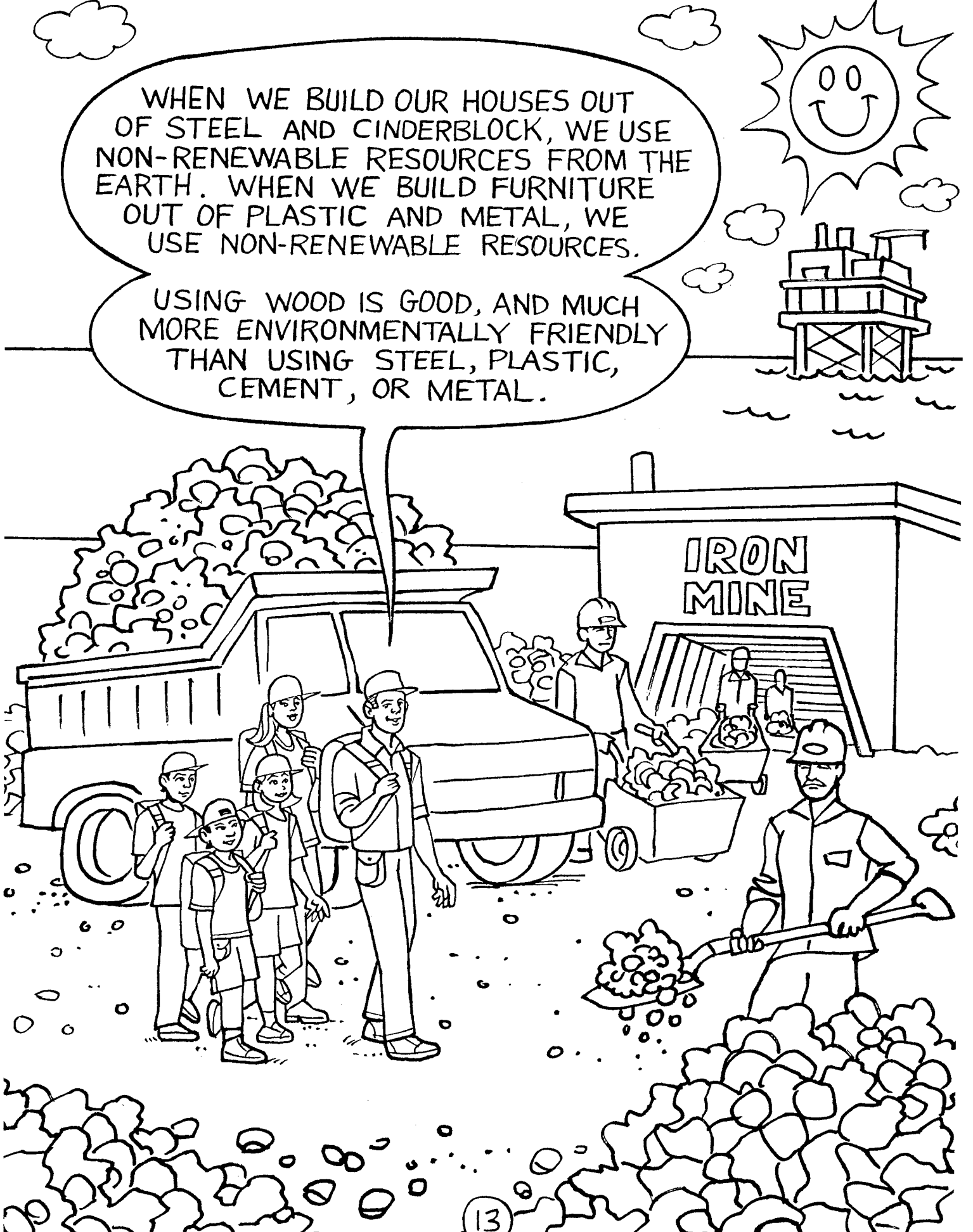


WITHIN A FEW YEARS, THE SEEDLINGS WILL GROW INTO SMALL TREES, AND PROVIDE NEW HOMES FOR WILDLIFE. HEALTHY, GROWING HARDWOOD TREES WILL PRODUCE MORE OXYGEN THAN OLD SLOWER GROWING TREES.

THE TREES WILL GROW TALL AND STRAIGHT, AND OUR GENERATION AND GENERATIONS TO COME WILL HAVE A BEAUTIFUL FOREST TO ENJOY. THE FOREST IS A RENEWABLE RESOURCE PROVIDING WOOD FOR TODAY AND TREES FOR TOMORROW.

WHEN WE BUILD OUR HOUSES OUT OF STEEL AND CINDERBLOCK, WE USE NON-RENEWABLE RESOURCES FROM THE EARTH. WHEN WE BUILD FURNITURE OUT OF PLASTIC AND METAL, WE USE NON-RENEWABLE RESOURCES.

USING WOOD IS GOOD, AND MUCH MORE ENVIRONMENTALLY FRIENDLY THAN USING STEEL, PLASTIC, CEMENT, OR METAL.



Products from Trees and Wood

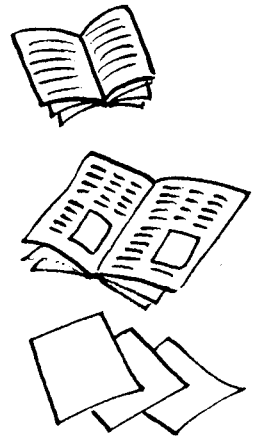
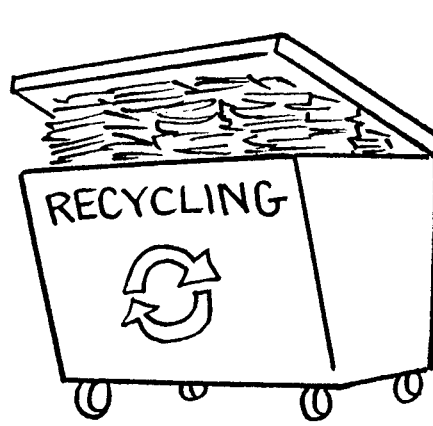
P H R E R O B S A P B H H V S T
U A O Z T W S S P A A S O K N O
R Z A C H S P T S O I P C T E I
Y H C V K R A E E L N I E F W L
S L U A I E B P O N T G I R S E
E A R N R A Y P H S I R E T P T
L O E A L D E S E T E B A Q A P
P C B L T O B L T W O O A C P A
A R B S H I C O O I B O O C E P
M A U S N I U O A B C R T Y R E
T H R T S W D G X R K K Z Y P R
F C D P N I L O I V D H S F E M
I K O S A L A D D R E S S I N G
L P F U R N I T U R E D O O R S
M A E R C E C I F L O O R I N G
S N C I R B A F N O Y A R C T Q

Asprin
Cabinets
Cork
Firewood
Guitar
Maple Syrup
Popsicle Sticks
Salad Dressing
Toilet Paper

Boats
Charcoal
Film
Furniture
Ice Cream
Paper
Rubber
Sponge
Violin

Baseball Bats
Cardboard
Doors
Flooring
Hockey Sticks
Newspaper
Rayon Fabric
Shoe Polish
Toothpaste

Wood is made up of cellulose, lignin, minerals, and chemical by-products. These can be separated from the wood and used in making many different kinds of products that surprise many people. Can you find all the products that come from a tree?

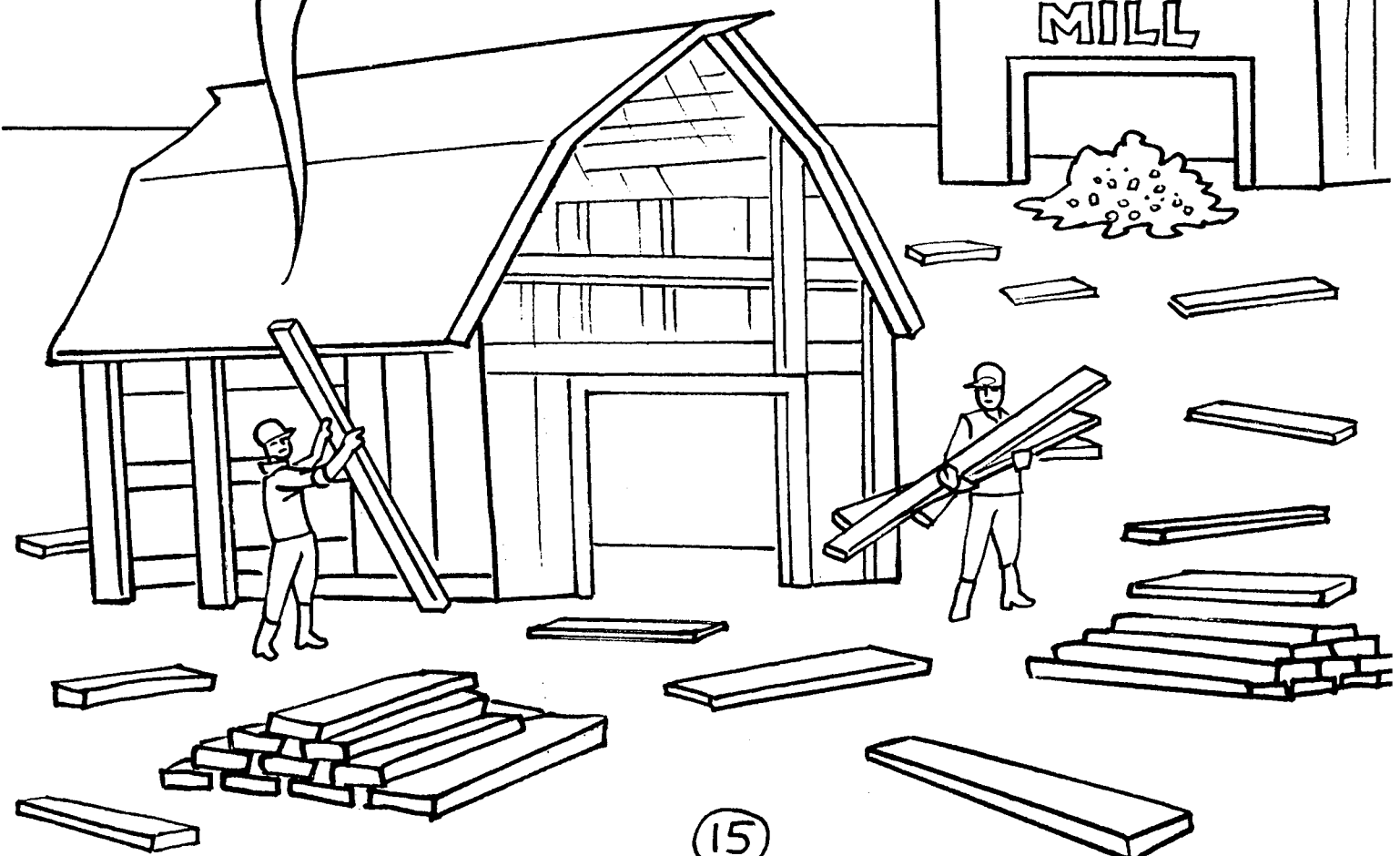


IT IS IMPORTANT THAT WE USE WOOD WISELY. WE SHOULD NOT WASTE THE WOOD RESOURCE NATURE PROVIDES.

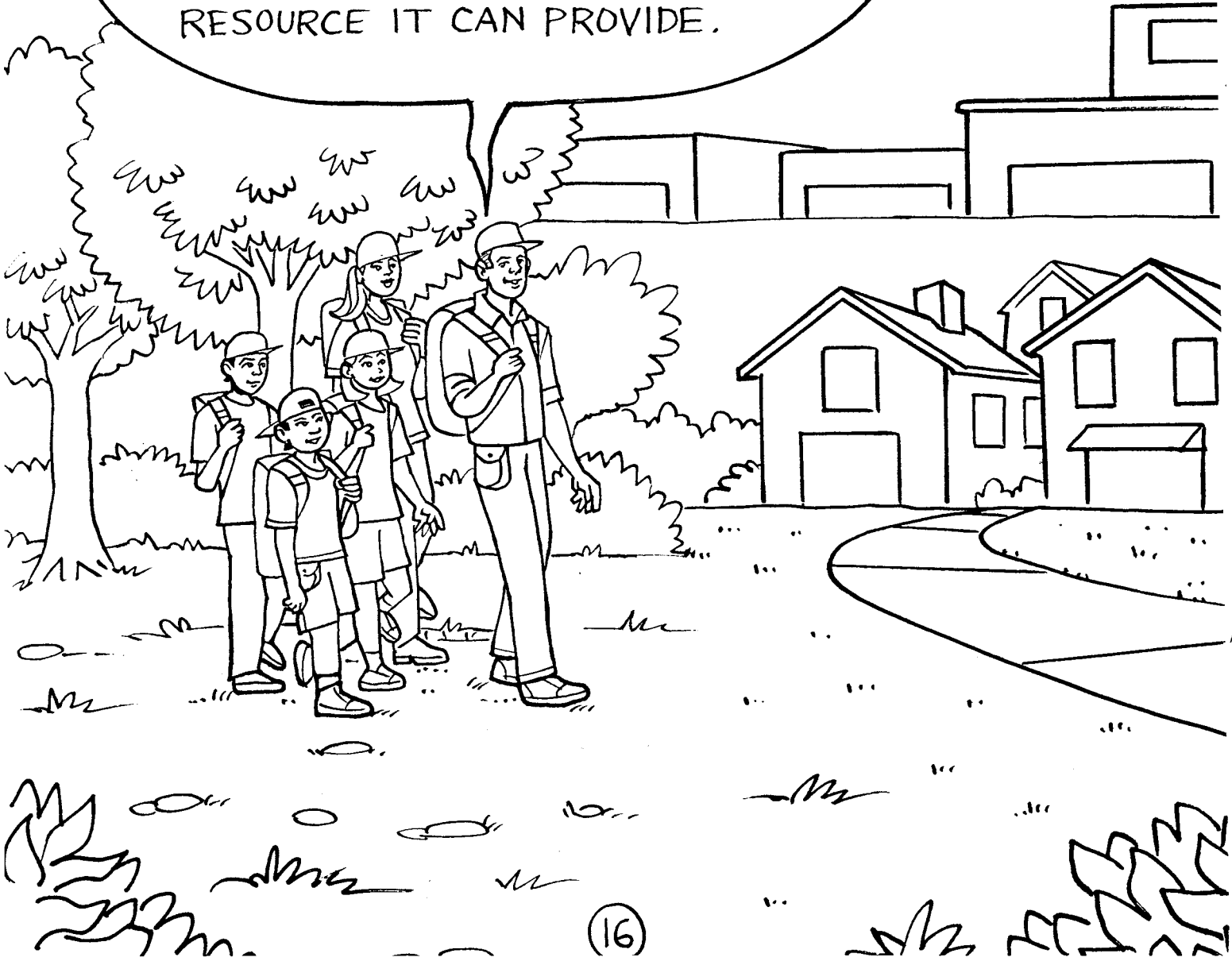
WE CAN REDUCE WOOD WASTE, REUSE WOOD FOR OTHER PURPOSES, AND RECYCLE PAPER.




+ PRESSURE =



TODAY, IN SOME AREAS OF THE STATE WE ARE LOSING FOREST BECAUSE PEOPLE ARE BUILDING HOMES AND OTHER BUILDINGS WHILE IN OTHER AREAS ABANDONED FARMLAND IS BECOMING A FOREST AGAIN. MANY PRIVATE FORESTLAND OWNERS ARE ALSO NOT MANAGING SMALL WOOD LOTS FOR THEIR LUMBER RESOURCE. WE NEED TO CONSERVE THE FOREST FOR ITS BEAUTY AND MANY BENEFITS, AS WELL AS THE LUMBER RESOURCE IT CAN PROVIDE.





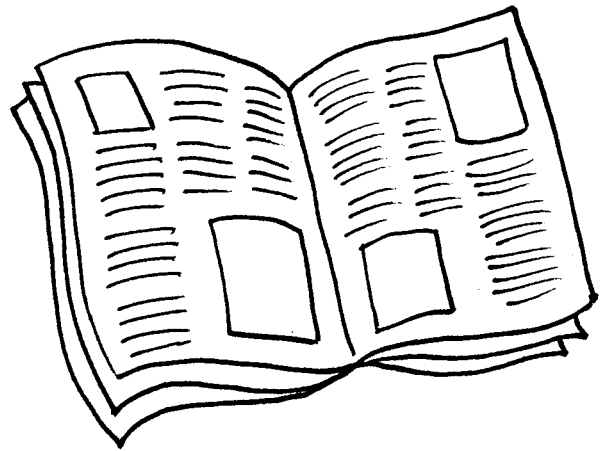
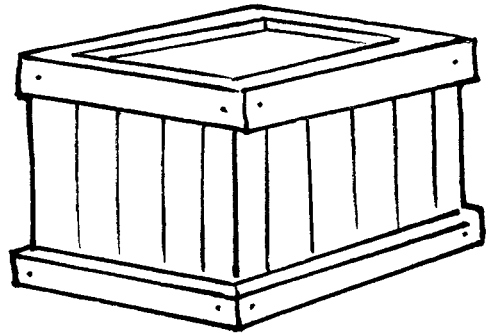
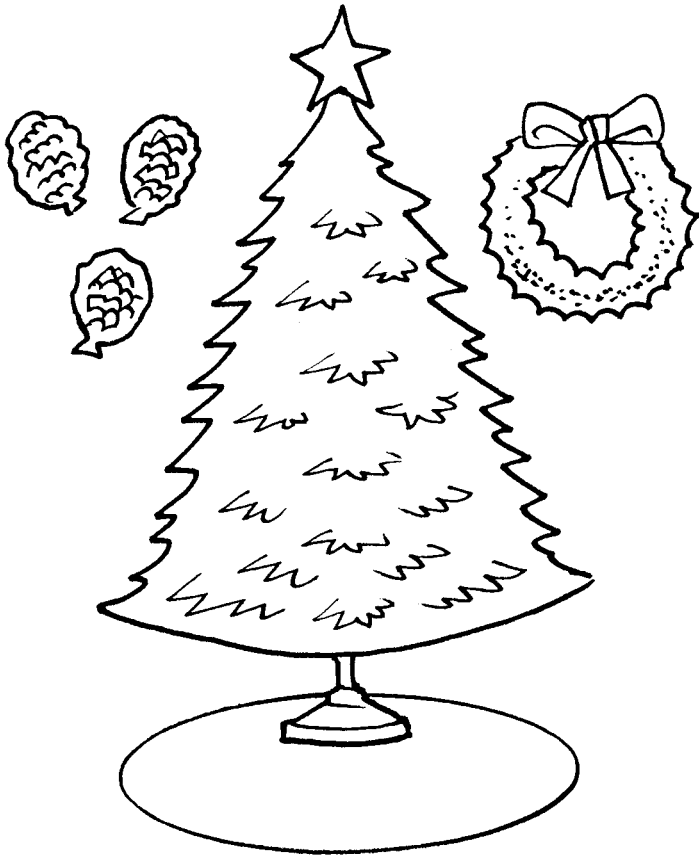
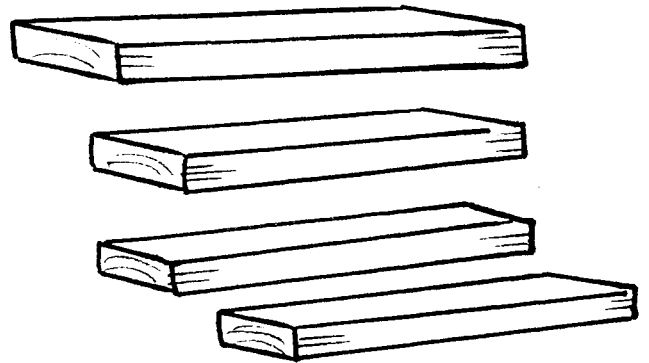
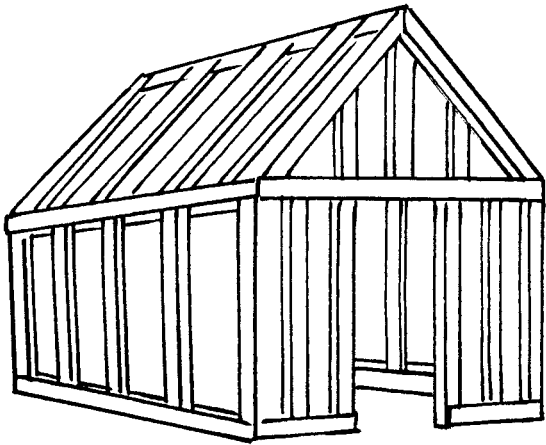
TODAY, PENNSYLVANIA'S FORESTS CONTINUE TO GROW AND RENEW THEMSELVES. PENNSYLVANIA HAS THE LARGEST HARDWOOD FOREST IN THE UNITED STATES, WITH NEARLY 17 MILLION ACRES OF FOREST. IT COVERS NEARLY 60% OF THE LAND IN PENNSYLVANIA.

PENNSYLVANIA PROVIDES 10% OF THE NATION'S HARDWOOD, MORE THAN ANY OTHER STATE. NEARLY 66,000 PEOPLE IN PENNSYLVANIA DEPEND ON THE FOREST'S RESOURCE FOR THEIR JOBS.

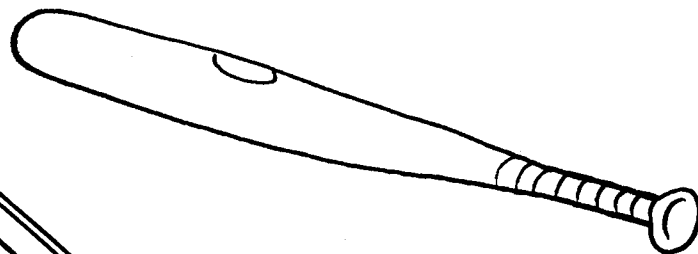
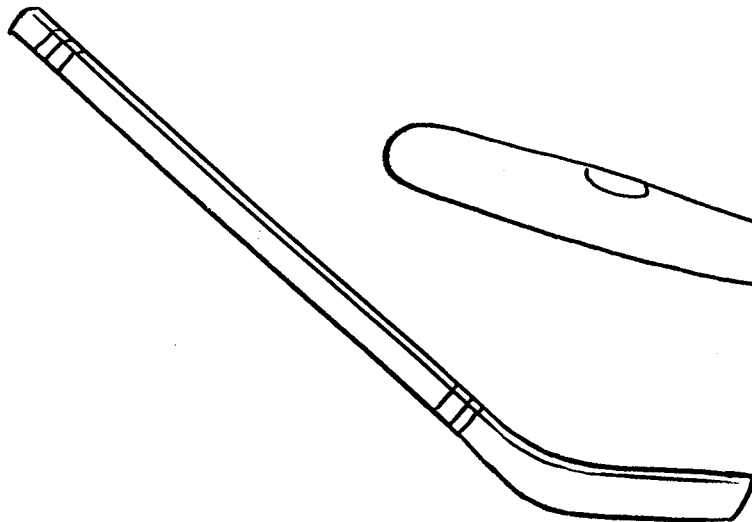
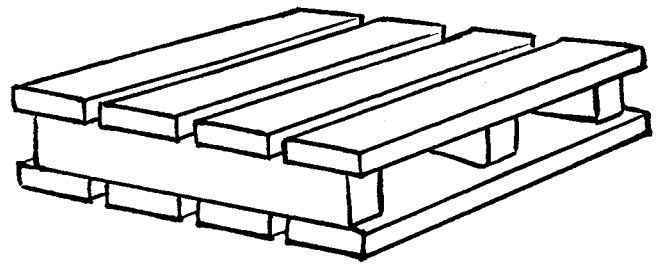
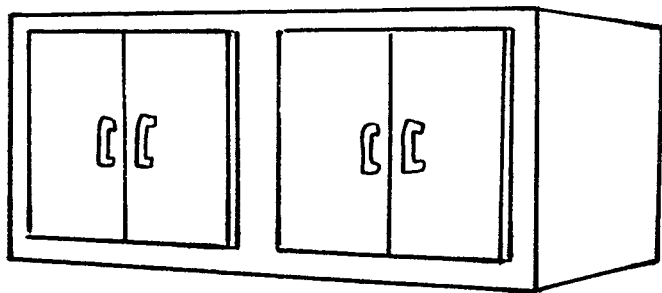
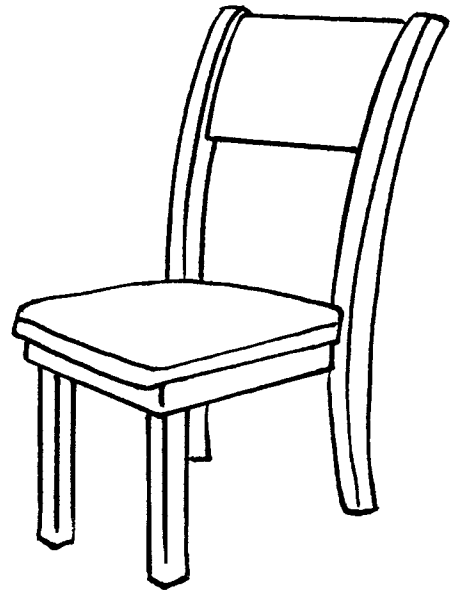
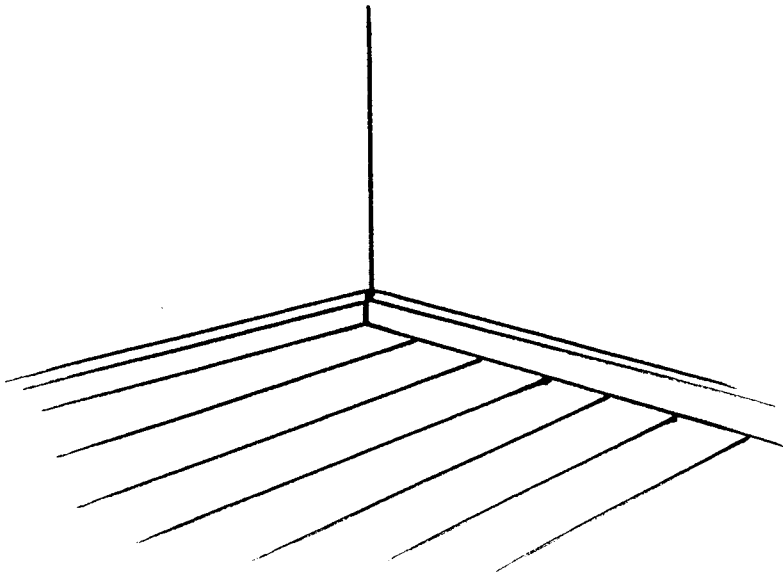
LET'S KEEP PENNSYLVANIA'S FOREST HEALTHY, GROWING AND WORKING TO PROVIDE ALL THE MANY BENEFITS AND PRODUCTS WE NEED.



PRODUCTS FROM SOFTWOOD TREES



PRODUCTS FROM HARDWOOD TREES





The Pennsylvania WoodMobile is a traveling exhibit that provides information on the state's forest resources and the state's forest products industry.

The WoodMobile is available for public events, such as county fairs, fall foliage festivals and forestry related events. It is also available for elementary school programs September-November and March-June.

Additional information on the Pennsylvania WoodMobile can be obtained by contacting the Pennsylvania Hardwoods Development Council, Pennsylvania Department of Agriculture at 717-772-3715 or by email: jongeyer@pa.gov

Pennsylvania Hardwoods Development Council
Pennsylvania Department of Agriculture
2301 N. Cameron Street, Room 308
Harrisburg, PA 17110
Tel: 717-772-3715
Fax: 717-705-0663
hardwoods@pa.gov
www.agriculture.pa.gov

This book was developed by:
The Path Forward Foundation
Box 884
Thorndale, PA 19372
484-364-9536
info@pathforwardfoundation.org
www.pathforwardfoundation.org

Special thanks to: Wayne Bender and Jonathan Geyer at the PA Hardwoods Development Council

Third Edition, 2018
Copyright 2008 Carl A. Pierce
All Rights Reserved

No part of this book may be reproduced or transmitted in any form or by any means, electronic or mechanical, including photocopy, recording, or in any informational storage and retrieval system, without the written permission of the author, Carl A. Pierce.