

HOLLYWOOD Casino

at
PENN NATIONAL RACE COURSE

June 30, 2017

Honorable Russell Redding
Secretary of Agriculture
COMMONWEALTH OF PENNSYLVANIA
2301 N. Cameron Street
Harrisburg, PA 17110

Kevin O'Toole
Executive Director
PENNSYLVANIA GAMING CONTROL BOARD
P.O. Box 69060
Harrisburg, PA 17106-9060

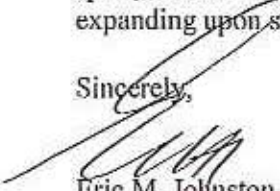
Dear Secretary Redding and Executive Director O'Toole,

On behalf of Hollywood Casino at Penn National Race Course (HCPNRC) and Penn National Gaming, Inc., it is my pleasure to submit the following report to the Department of Agriculture and the Pennsylvania Gaming Control Board as required under Section 1211(a)(2) of the new table games legislation.

Penn National Gaming, Inc. has more than 40 years of racing heritage that began with the opening of Penn National Race Course in 1972. Today, Penn National Gaming, Inc. continues to be the largest operator to pari-mutuel facilities in North America and stands more committed than ever to horse racing within the Commonwealth.

Throughout 2016 and into 2017 Hollywood Casino at Penn National Race Course continues working to increase the prestige of our racing program and the credibility of our racetrack and the Commonwealth, on both, the local and national stage. The success of our inaugural \$500,000 Penn Mile in its short five year history, demonstrates the excitement that can be generated by our great sport, and our commitment to producing a quality racing product. We look forward to continuing and expanding upon successes such as these in the years to come.

Sincerely,



Eric M. Johnston
Director of Racing Operations
Hollywood Casino at Penn National Race Course

Copy to: J. Snowden, PNG
J. Finamore, PNG
E. Schippers, PNG
J. Newman, PNG
C. McErlean, PNG
T. Chukas, Dept. of Ag

Enclosures

INTRODUCTION

Penn National Race Course opened August 30, 1972 and is the second oldest continuously operating Thoroughbred racetrack in the Commonwealth. Over its 44-year history Penn National has been an innovator and national leader in the pari-mutuel industry.

The Carlino family that took control of Penn National in the early 1980's was able to take this single racetrack and parlay that success into the publicly traded Penn National Gaming, Inc., now one of North America's largest and most diversified gaming and racing companies with annual revenues in excess of \$2.9 billion and 28 facilities in 21 different jurisdictions, including California, Colorado, Florida, Illinois, Indiana, Iowa, Kansas, Louisiana, Maine, Maryland, Massachusetts, Mississippi, Missouri, Nevada, New Jersey, New Mexico, Ohio, Pennsylvania, Texas, West Virginia, and Ontario, Canada.

In aggregate, Penn National's operated facilities feature approximately 36,800 gaming machines, 850 table games, 2,900 hotel rooms and 1.6 million square feet of gaming floor space.

Horse racing and pari-mutuel wagering continue to be an integral part of Penn National Gaming's continued growth strategy. The company is the largest owner-operator of pari-mutuel racing facilities in North America with 11 wholly or jointly owned operations that conduct nearly 1,200 live racing performances annually and processes in excess of \$1 billion in live and simulcast pari-mutuel wagers.

February 2008, ushered in a new era of Thoroughbred horse racing in Central Pennsylvania. Hollywood Casino at Penn National Race Course (HCPN) became the first established racetrack in the state to embrace the legislative intent of Act 71 in creating a fully integrated racing and gaming facility. The \$325 million project featured all new facilities for racing guests, officials and participants.

Since its passage, HCPN has aggressively worked to embrace the legislative intent of Act 71 with respect to stable area improvements.

In 2008, HCPN and the PA HBPA entered into a ten year \$10 million commitment for stable area improvements. In just over 9 years, \$9.5 million has been invested in the construction of new barns, improved electrical and plumbing infrastructure, roadway improvements and compliance with Federal and State manure handling requirements.

In addition to the investments noted above, close to \$5 million in capital improvement projects dedicated to horse racing have been completed comprised of new track maintenance equipment, a new equine ambulance, new stable gate entrance area with additional fencing, a refurbished receiving barn and perimeter fencing, a new Laundromat and Medical Clinic, a new roof on the Chapel, security cameras in the Receiving Barn, 21 new storage trailers for the barns and shadow fencing around the perimeter of the race track. Additionally, working in cooperation with the PA HBPA we have constructed a new groom's dormitory, at a cost of \$800,000, that is designed to house 50 stable area employees.

HCPN is proud of the improvements it has made to its racing surface. Working closely with the PA HBPA new materials used on the dirt track have resulted in a lower rate of catastrophic injuries and a 30% decline since 2009. Additionally, the rate of catastrophic injuries has been at or below the national average the past six years. Also in 2014 we implemented a new aeration program for the turf course. The system known as Dry-Ject is a two-phase process that uses water jets to penetrate the

surface of the soil and inject a porous silica sand into the existing growing medium. The first phase "punches" holes on a six inch by six inch grid pattern and penetrates the surface eight to twelve inches deep and injects the silica sand. The second phase injects the silica sand in a fractured pattern to a depth of about four inches. The results of this process are a healthier, faster drying turf course with deeper root growth for extended durability.

As a leader in the pari-mutuel industry HCPN understands the many diverse challenges facing horse racing. These challenges which have gained national exposure and attention are not new, nor unique to Penn National, or for that matter any of the racetracks in the Commonwealth. In its continuing efforts to maintain its leadership role and commitment to racing, Penn National Gaming introduced its "Horsemen's Guide" (enclosed) in 2011, for all its pari-mutuel facilities. The Guide is updated and revised annually, details national and local integrity standards and clearly states the expectations HCPN has of those wishing to participate and those participating at its facility. The "Guide" is a detailed publication giving horsemen direction and information when racing at Penn National.

Our concern with the humane treatment of our equine population has resulted in a corporate wide policy on horse slaughter with penalties for those who violate the policy. In furtherance of our commitment in this area, Penn National donates annually to various horse retirement programs for the PA HBPA, including New Start, CANTER of PA, R.A.C.E. Fund and ReRun.

Additionally, the Penn National Gaming tracks have been at the forefront of the battle for the adoption of unified medication rules as recommended by the Racing Medication Testing Consortium (RMTC) which would limit the use of therapeutic medications in horse racing. Penn National was also the first Thoroughbred track in the Commonwealth to utilize an independent contractor to administer furosemide (lasix) on race day.

The pari-mutuel industry has endured significant change over the past 20 years, with Pennsylvania being at the forefront in many of these areas.

Intrastate, and then interstate simulcasting exploded in the 1980's and early 1990's bringing greater choice to racing customers and providing new distribution outlets and revenue opportunities to Pennsylvania racetracks and horsemen.

A new breed of Off-Track Wagering (OTW) was developed and perfected in Pennsylvania through track owned OTWs featuring dining facilities and sports bar amenities – shattering the previous, undesirable and now defunct OTB model that had been developed in New York State. Penn National was a trailblazer in the development of OTWs both in central Pennsylvania and, through its prior ownership of Pocono Downs, in the northeastern portion of the state. Over the years the convenience of wagering from home via the phone or internet has grown at the detriment of the OTW's. The expense of the brick and mortar facilities has become burdensome and needs to be closely scrutinized if it is to continue in a profitable fashion in the future.

First telephone account wagering, and later wagering via computers and the Internet, provided yet another valuable distribution tool for Pennsylvania racetracks and were a response to the continuing change in preferences for increased information and access by the horse racing fan. Penn National's Telebet, a live telephone operator service, was one of the first operations of its type in North America.

The evolution of increased off-site distribution forged by Pennsylvania since the 1980's has been emulated in many other states with similar growth trajectories. This cycle of change has redefined the current horse racing business model in many ways from economics to customer wagering and

viewing habits. Given these developments have occurred over a 20-year time span many of these innovations have reached maturity status and are now in decline, both in Pennsylvania and nationally.

Today, handle on horse racing nationally is generated in most jurisdictions not on live racing occurring at the racetrack, but on simulcast horse (or dog) racing being broadcast into these facilities and through off-site distribution channels. The 2017 Jockey Club Fact Book indicated that despite the growth in total handle (up .6% from 2015) only \$1.058 billion (down 0.05% from 2016) of the \$10.74 billion wagered on Thoroughbred Racing in the United States was generated through live racing at on-track sources. (Exhibit 1) The remainder was generated away from the racetrack, in many places by third parties that may or may not have significant links or vested economic interests in the racing industry, adding yet another competitive layer of complexity to the industry puzzle.

Given greater consumer choices and usage channels, and a significant imbalance in terms of supply versus handle and attendance has been noticeable at not only racetracks in the Commonwealth, but across the nation. Again, we refer to the 2017 Jockey Club Fact Book reports on pari-mutuel handle trends, Average Field Size, Starts Per horse and Foal Crops as proof of these continued downward trends (see Exhibit 1).

While being highlighted nationally as a strong racing state, Pennsylvania saw a drop in foal crop, again in 2015. For the fifth consecutive year, the foal crop dropped from a high of 1,533 in 2010 to 669 in 2015. While the North American Foal crop had dwindled as well over the last several years, the percentage of Pennsylvania registered foals has dropped from 5.5% in 2010 to 3.0% in 2015 (see Exhibit 1). Additionally, the number of mares bred and stallions standing in the State of Pennsylvania have also been in decline since 2009 (see Exhibit 1).

These numbers point to Pennsylvania racing hitting a plateau and begin a period of decline. Future growth will be difficult unless changes are made. Pennsylvania Racetracks and Horsemen needs to take a serious look at the number of racing dates that are being conducted in the Commonwealth. A potential circuit among the tracks could help grow field size, increase purses and create a superior product. Field size has unequivocally been shown to have a great impact on handle with larger fields generating larger handles.

Among Thoroughbred racetracks, competition for quality and optimum numbers of available racehorses to fill race cards is a challenge, even with purse (prize) money increasing due to alternative gaming revenue sources. One only needs to look at the above mentioned national and local trends to see the reasons why. The introduction of Act 71 and the significant influx of funding from slot machine gaming dollars to purse and breeders funds has created the opportunity to significantly increase earning opportunities for horse owners, breeders and trainers, allowing Pennsylvania to move up in stature among not only racetracks in the competitive Mid Atlantic Region but among tracks on the national landscape as well.

Despite the challenges racetracks face in attracting customers to its brick and mortar facilities, Penn National continues to strategically invest in its facility to expand the market and offer customers and horsemen a first class experience. HCPN made a significant capital investment in a state of the art High Definition Video Production equipment for the production and dissemination of its live racing product. HCPN joins only a handful of tracks across America who have made such a substantial investment to supply superior quality video to its racing fans. Additionally a new graphics package was introduced with the high definition rollout.

With respect to Horsemen issues, Penn National is proud of the relationship it has fostered with the PA HBPA. We have worked with them on a number of major initiatives that we feel will greatly benefit racing in the Commonwealth. Foremost among these is the creation of a stakes schedule in

2013 centered around marquee events and featured the inaugural running of the \$500,000 Penn Mile. This partnership has continued into 2016 with a renewal of the stakes program and the fourth running of the Penn Mile. Additionally, HCPN has partnered with the PA IIBPA in such success events as the Ostrich and Camel Racing and the newly revised World Series of Handicapping. In Part II of the following report, the planning and results of the most recent two runnings of this event will be detailed and we hope this day will continue to succeed in the future and help bolster racing at HCPN and in the Commonwealth as a whole.

The Pennsylvania State Department of Agriculture and the Gaming Control Board have asked racetrack operators in the state to detail the impact of Act 71 as it relates to facility investments and improvements, existing and future marketing and promotional efforts regarding horse racing, on-track attendance for live racing and benchmarks for breeding, racing and handle. Penn National Race Course is pleased to present the enclosed information which illustrates the many diverse impacts of casino gaming on horse racing at HCPN and will be responding in the order as presented by the Department of Agriculture's previously distributed outline.

PART I LIVE ATTENDANCE

1. *Furnish documentation of how the introduction of slot machine gaming at the licensed racetrack has enhanced live racing by increasing live attendance over the calendar year.*

A. Total attendance statistics – daily, monthly and annually

Total attendance statistics for Hollywood Casino at Penn National Race Course (herein referred to as "HCPN") (Grantville) and the two Off-Track Wagering facilities (Lancaster and York) are enclosed (see Exhibit 2) for 2016.

Attendance is presented on a day-to-day basis along with monthly totals. (Exhibit 2)

Annual attendance for each facility is as follows for the past three years:

	2016	2015	2016-2015 % Change
Grantville	229,651	247,791	-7.32%
Lancaster OTW	32,841	32,469	1.13%
York OTW	40,053	47,453	-15.59%

B. Description of the general demeanor and qualities of facility and amenities.

As of February 2008, Live Horse Racing and Simulcast Wagering have been conducted within the state of the art, \$325 million facility at HCPN. Some of the facility features include:

- Over 70 separate wagering locations with Sportech wagering terminals offering either manned tellers or self-service capabilities.

- Over 110 flat screen, LCD monitors (many of which were replaced in January of 2015) capable of showing High Definition racing and sporting events (where offered.) Live racing from IICPN is now shown on monitors in IID on the casino floor and in the popular Skybox sports bar.
- The 450-seat Mountainview dining room overlooking the racetrack is open every live racing night. Each table includes an individual television monitor with many also offering touch screen, table top wagering machines.
- Our box seat area accommodates 256 guests. Public seating is available to the general population free of charge with box seats available for sale on a nightly or annual basis.
- The 150-seat simulcast tele-theater features individual handicapper work stations, 24 55" flat-screen LCD monitors, 12 additional 32" flat-screen TVs and 16 tabletop wagering terminals and a food service area.
- The Paddock Café, an 80+ seat lounge located adjacent to our Paddock/Walking Ring features wagering terminals, program sales, flat-screen televisions, a food court and easy access to the box seats and Mountainview dining.
- An expansive outdoor apron area provides up-close viewing of the Paddock and racing for guests with dozens of picnic tables and other seating options. There is easy access to expanded wagering terminals. Increased food and beverage options have been implemented over the last year, including a food truck on the apron that is open weekends over the summer.
- The \$200,000 stairway from the box seats and Mountainview dining room to the Paddock Café area was added in 2011 and affords customers and horsemen easy access to the paddock and walking ring area.
- On the racing side, IICPN offers a one-mile dirt track, a seven-eighths mile turf course (the first one constructed in the state) and offers year-round stabling for approximately 1,100 horses in 25 barns. As part of its agreement with the PA HBPA to conform to the backstretch improvement provisions of Act 71, HCPN has constructed 14 new barns since mid-2008. HCPN entered into a 10-year, \$10 million backstretch capital improvement program in consultation with PA IIBPA.

C. Description of appropriate signage and information so patrons can easily access and utilize racing facilities.

Exhibit 3 provides photographs of some of the signage within the HCPNRC facility relating to horse racing. The integrated racing and gaming facility provides easy access from the first floor gaming area to the second and third floor dedicated racing sections. In addition, the facility has convenient and direct access off the casino floor to the outside racing areas.

Guests of the racetrack can conveniently park in the modern 2,500 car parking garage which provides direct access to the second floor Mountainview Dining Room and Simulcast Teletheater level facilities and to the third floor box seat level.

D. Description of changes to physical plant.

The original grandstand building at HCPN was razed in 2006 and was replaced in its entirety with a \$325 million state of the art, integrated racing and casino gaming facility. All amenities for racing guests, racing officials and jockeys were part of this new construction.

HCPN introduced Table Games in July 2010. Currently there are over 2,400 slot machines on the gaming floor in addition to 64 table games and 16 poker tables. Television monitors dedicated to horse racing are located throughout the casino.

In 2015 HCPN, in cooperation with the PA HBPA opened the newly constructed \$775,000, 25 room, 50 bed grooms' dormitory. The climate controlled facility offers accommodations for men and women and a common area for social gatherings. To date the facility is approximately 55% occupied.

In 2016, HCPN complete the construction of another new barn, at a cost of \$500,000 bringing the total number constructed since 2008 to 14.

Other upgrades and improvements for 2016; \$310,000 for three new John Deere Tractors, \$44,500 to replace the turf rail with a new Duralock Safety Rail, \$6,800 to upgrade our Champion Grader for racing surface management, \$9,500 for non-skid epoxy floor treatments in the Jockey's Room and \$12,300 to replace race track access swing gates with sliding roller gates. Additionally, HCPN has begun a project to replace the existing film patrol cameras with remotely operated cameras. To date two of the six cameras have been replaced at a cost of \$35,000 with the balance scheduled for 2017.

2. *Describe plans to improve attendance at licensee's racetrack over the successive calendar year in addition to a marketing plan that includes:*

A. **Planned promotional programs to attract patronage**

Beginning in 2013, HCPN restructured its stakes program to create two "Marquee Event Days", Penn Mile Day (run between the Preakness Stakes and the Belmont Stakes) and The Holiday Racing Festival, formerly known as Fabulous Strike Day (run in late fall). Marquee Event Days such as the Breeders' Cup, Maryland Million Day, Charlestown Classic have been proven across the racing industry to increase awareness and excitement, both locally and nationally for the host track. Awareness of this type has become extremely important as almost 90% of live handle is generated by off-track simulcast facilities.

In 2012, the open HCPN stakes schedule consisted of 12 races, all with purses between \$75,000 - \$200,000, and split out over five days. In contrast, the 2016 HCPN stakes schedule was a radical departure, consisting of six open stakes races split over only two days, including three \$200,000 stakes races, and the premier race for HCPN, the \$500,000 Penn Mile. The idea being that in order to make a splash on both a regional and national level, it would be necessary to create a day that could lure some of the top horses, trainers, and jockeys in the country to HCPN.

HCPN continues to put a major marketing and advertising efforts behind the Marquee Event Days, including advertising nationally with the following major print, online, and TV outlets: Daily Racing Form, Paulick Report, Horse Racing Radio Network (HRRN), TVG2, Indian Charlie Industry Newsletter and the Racing Biz. Locally, the Penn Mile was advertised in the Patriot News, on select Cumulus Radio stations, online at www.hcpn.com/racing, via on-track signage (starting gate, finish line, building, racing program), and also via the HCPN international simulcast TV feed.

The inaugural Penn Mile Day was a rousing success. The race attracted three graded stakes winners, a horse from the Kentucky Derby, and four of the best jockeys in the country – Hall of Famers John Velazquez and Edgar Prado, 2013 Kentucky Derby winning jockey Joel Rosario, and Javier Castellano. The impressive winner was Rydilluc for trainer Gary Contessa.

HCPNRC shattered all of its previous handle records. All-sources wagering on the Penn Mile race itself was \$1,139,478, making it far and away the largest single-race handle in the 40-year history of the track. The previous record was the Pennsylvania Governor's Cup Handicap on August 1, 2009, which handled \$377,365.

Total all-sources wagering on the entire ten-race card at Penn National was \$3,658,996, shattering the previous all-sources handle record for a single card of \$2,173,921, which was set on December 26, 1998.

The second renewal of Penn Mile Day, on May 31, 2014, saw similar successes, attracting numerous graded stakes winning horses such as, eventual winner,

Bobby's Kitten, who went on to win the prestigious 2014 Breeders' Cup Turf Sprint and propel the Penn Mile to Grade 3 status by the North American Graded Stakes Committee, an achievement rarely done in just two runnings.

The third running of the Penn Mile (first with Graded Status) on May 30, 2015 set the new standard for racing at HCPN by attracting horses from every major racing jurisdiction in the U.S., such as Kentucky Derby contender Ocho Ocho Ocho and Papacoolpapacool from California, My Point Exactly from Florida, Granny's Kitten and Tuba from Kentucky and eventual winner Force the Pass from New York.

The full fields and quality, competitive races forged the way for a setting NEW single race and single day handle records \$1.25mm and \$3.86mm respectively.

The fourth running of the Grade 3 Penn Mile on June 4, 2016, attracted one of the most competitive fields of horses ever run at Penn National including the Breeders' Cup Filly Juvenile Turf Champion Catch a Glimpse. On her way to her sixth consecutive Graded Stakes victory, the Mark Casse trained filly out ran six other horses representing some of the most recognized owners, trainers and jockeys in the industry, including trainers Todd Pletcher, Mike Make Thomas Albertrani, Chad Brown and jockeys Florent Geroux, Joel Rosario and Javier Castellano.

As a result of attracting and or producing four Grade 1 winners (Bobby's Kitten 2014, Force the Pass 2015, Catch a Glimpse and Beach Patrol, 2016) the Penn Mile was elevated to Grade 2 status.

The 2017 edition of the Penn Mile, now as a Grade 2, was not a disappointment as it attracted some of the best turf three-year-olds from both coast, including California invaders Big Score and Cistron for trainers Tim Yawken and John Sadler, respectively. But the honors of the day went to the east coast as Frostmourne came from off the pace to win the Mile for trainer Christophe Clement.

As usual the Penn Mile Day card attracted the best of the best, including jockeys Irad Ortiz, Javier Castellano, Edgar Prado, Paco Lopez, Luis Saez and Tyler Gaffalione and trainers Todd Pletcher, Mike Maker, George Weaver, Linda Rice, Mary Eppler, Peter Miller, Michael Dini and Graham Motion.

The Penn Mile card was redesigned with an earlier 3:45pm first post and the rescheduling of three Pennsylvania Bred Stakes Races. The earlier post allowed us to keep the 6:00 to 8:00pm time slot carved out over the last several years for the four traditional Penn Mile Day stakes, while permitting us to run the remainder of the program as the under card. This change was overwhelmingly and enthusiastically accepted by our fans as they came out in droves and wagered over \$3.2 mm, the third largest all time handle for HCPN.

HCPN looks to continue building on the success and excitement generated by the Penn Mile in the coming years.

The second of two major stakes nights planned for 2016, The Holiday Racing Festival was also a great success and was well supported by the betting public with a total handle for the day in excess of \$1.8 million. The Fabulous Strike stakes drew eleven of the most talented sprinters, jockeys and trainers on the east coast.

Once again, the Ostrich and Camel races were one of the biggest attractions in 2016 and continued into 2017. This annual event has become a fan favorite as patrons literally filled the trackside apron, in what was described by one long time employee as the "largest crowd on the apron since the concerts in the late seventies". The 2016 event duplicated the success, drawing families and non-racing fans to the facility for the first time.

Additional promotional activities currently planned are as follows:

- The Budweiser Clydesdales will be on track on late June and are always a crowd favorite.
- Penn National continues its agreement with the Television Games Network "TVG", the largest broadcaster of live racing in the country showing IICPN races and giving the racing product expanded coverage.
- The World Series of Handicapping (WSH) is the oldest handicapping contest in the country (started in 1977) and for 2016 has expanded to include satellite qualifying tournaments that will lead to a final event in November which will award two berths to the National Handicapping Championship to be held in January 2017 in Las Vegas.
- IICPNRC has hosted several editions of the FERENTRI (International Federation of Amateur Riders) events
- IICPN, its OTWs and Ebet/Telebet have a guest loyalty program "Players Choice" where guests may earn points redeemable for wagering vouchers and programs/handicapping materials. Approximately 30% of total handle annually is tracked through this program.
- In order to heighten the on-track excitement for the Triple Crown, HCPN offers special promotions and restaurant offerings during each leg, the Kentucky Derby, Preakness, and Belmont Stakes.

In 2012, HCPN launched a new online Advanced Deposit Wagering (ADW) site, www.cbetusa.com. Based on the success of EBetUSA, HCPN has created and will transition to a new ADW platform, www.hollywoodraces.com in 2016. The new hollywoodraces.com will offer a multitude of new features and improvements to provide for a more customer friendly experience including a refreshed look and home page as well as a mobile app available for both I-phone and android users.

Please see Exhibit 4 for various items related to the Penn Mile, Holiday Racing Festival, The World Series of Handicapping and other promotional events,

including advertisements, on-track signage, previews of races, photos and recap articles.

B. Plans for public awareness and outreach

Please see Part I, Section 2 to read about many of the public awareness and outreach plans IICPN put into motion.

- In 2015, HCPNRC began a "Grass Roots" community awareness and promotional program with charitable organizations such as Susquehanna Service Dogs, R.A.C.E. Fund Horse Retirement and Manada Creek Pony Club. Charitable Organizations are invited to attend and promote their programs on our major racing days in exchange for their messaging their social media followership about their attendance at the event.
- Additionally, in 2016 HCPN expanded the Ostrich and Camel racing program to include Charitable Organizations from Dauphin, Lebanon and Schuylkill Counties. Those charities include Sexual Assault Resource and Counseling Center, Domestic Violence Intervention of Lebanon County, Hamilton Healthcare Baby Love Addiction and Pregnancy Services and Schuylkill Women in Crisis.
- Also in 2015, HCPN introduce the Saturday Sunrise program in cooperation with the PA HBPA. The program scheduled for one Saturday morning each month during the summer, invites racing fans of all ages to come out and watch morning training and meet owners, trainers and jockeys in a casual setting while enjoying a free continental breakfast. This program continues through 2016 and has drawn a mixed crowd of racing fans and perspective owners.
- HCPN continues to utilize social media such as Facebook, Twitter and YouTube pages to help promote the racing product. The Facebook page, in particular, has been greatly received by fans, with numerous updates each week and lots of fan interaction (see Exhibit 5)
- HCPN continues to advertise its big horse racing events in the Patriot-News, a Harrisburg newspaper with a circulation in excess of 490,000 readers. This advertising is utilized to help promote specific big racing events at Penn National like the Penn Milc this past June (see Exhibit 4).
- IICPN sends out monthly mailers to approximately 50,000 people and each mailer contains information about racing.

C. Proposed changes to physical plant (if any)

Please see Part I, Section 1.

PART II HANDLE

- 1. *Furnish documentation of how the introduction of slot machine gaming at the licensed racetracks has enhanced live racing by increasing live handle over the calendar year. Please include the following:***

- A. Total amount of live handle wagered on races conducted by licensee.**
1. On-track
 2. Off-Track
 3. Account Wagering
 4. Other Guest Locations

Please see Exhibit 6 for detailed statistics for On-site handle categories for calendar years 2016, 2015, 2014, 2013, 2012, 2011, 2010 and 2009 and for Other Guest Locations (Export Handle).

- B. Total amount wagered on simulcast races received by the licensee**
1. On-Track
 2. Off-Track
 3. Account Wagering

Please see Exhibit 6 for detailed statistics in all the above mentioned categories for calendar years 2015, 2014, 2013, 2012, 2011, 2010 and 2009.

- 2. Describe plans to increase live handle and simulcast handle with both licensee and at guest locations. UPDATE**

Please see Exhibit 6

All-sources handle on races run at Hollywood Casino at Penn National Race Course in 2016 decreased 8.77% to \$156,212,756 versus the \$171,243,040 wagered in 2015. While total handle decreased for 2016, Total On-site Handle from all sites and sources increased 6.78%. Despite an increase in the total number of races run in 2016 and average field size remaining flat at 7.5 horses per race, the Export Handle dropped 8.19%. The majority of this decrease can be attributed to the reduction of national television distribution when HRTV was sold to TVG and rebranded as TVG2 in late 2015. Since that, HCPN reached an agreement with TVG to provide its signal in High Definition. Through this agreement, struck in November 2016, HCPN has seen increases in television dissemination and increases in export handle.

PART III NATIVE BREEDING INDUSTRY UPDATE

1. *Furnish documentation of how the introduction of slot machine gaming at the licensed racetrack has enhanced live racing by increasing the number of PA-bred or PA-sired horses participating in races at track over the calendar year. Please include the following:*

A. **Total of individual PA-bred/sired horses competing at racetrack, total number of starts these horses made and total purses earned.**

In 2016 a total of 1,181 individual PA-bred/sired horses competed at Hollywood Casino at Penn National Race Course. These horses won 603 races, made a total of 5,118 starts and earned \$14,454,483. While reduced from the numbers seen in 2015, PA Bred horses continue to win 39.57% of the races contest at IICPN.

B. **Percentage of the whole that these PA-bred/sired horses contribute to the total number of horses competing at its track, the percentage of the whole as to total number of starts made, the percentage of the whole of purses earned.**

Statistics are not kept as to individual horses competing at HCPNRC. In 2016 a total of 11,444 starts were made at HCPN, PA-bred/sired horses made up 44.72% (down slightly from 2015 at 47.82) of that total. Total purses distributed at HCPN in 2015 were \$29,225,950 with PA-bred/sired horses earning \$14,454,483 or 49.46%.

C. **Total number of races restricting entry to PA-bred or PA-sired horses and total purses paid in restricted races.**

In 2016 a total of 200 races were restricted to Pa-bred/sired horses. There were 195 overnight races and 5 stake races for a total purse distribution of \$6,038,300.

Exhibit 7 documents information regarding PA-bred/sired races from 2007 through 2016. Information for these statistics was provided by the Pennsylvania Thoroughbred Breeders Association and the HCPN Horsemen's Bookkeeper utilizing information provided by InCompass Solutions.

2. *Describe plans to increase participation of PA-bred or PA-sired horses and total purses paid in restricted races.*

As is clearly evident by the number of races written and won by Pennsylvania bred horses in 2015 and 2016, HCPN has, and will continue to be, an active partner with the Commonwealth's Thoroughbred Breeders and Horsemen in the promotion and advocacy of state-bred racing opportunities. HCPN desires a strong PA-bred racing program that can produce an adequate quantity of quality racehorses that are competitive not only against other PA-bred horses, but also against open company. A strong PA-bred program benefits all facets of the horse industry in the state and stimulates interest among the wagering public.

In addition to being an active member of the PA Breeders Advisory Committee, HCPN offers many advantages to state-bred/sired horses competing here on a year-round basis. Those current advantages include:

- In concert with the PA HBPA and the PA Breeders, HCPN put on PA Owners Appreciation Day in September of each year, with all races having enhanced purses and preference to horses that have a history of racing at HCPN.
- The 2016 PA Owners Appreciation Day on Saturday, September 24, included purse enhancements equal to an additional 50% per race category. The enhanced purses allowed us to conduct 10 quality races with full fields and offer preference to the horsemen that support the HCPN racing program, on a daily basis.
- Each Penn Mile Day, stakes and overnight races restricted to PA Breeds are carded to help promote on a national stage the best horses and stallions that PA has to offer.
- At least two (2) races per day in the Condition Book written exclusively for PA-bred horses;
- Per statute, any race with at least eight (8) separate PA-bred entrants is closed exclusively for PA-breds;
- PA-breds receive preference in entering of horses at HCPN;
- A 20% additional bonus in purse money for owners of a PA-bred horse competing at HCPNRC.

Opportunities for PA-bred horses at HCPN continued to on pace in 2016 as a percentage of the total racing product despite the reducing the total number of races. A total of 200 races were carded exclusively for PA-bred horses – six times the number of racing opportunities for PA-breds since 2007.

HCPN is extremely appreciative of the role the PA-Bred horses have taken by becoming an increasing portion of our racing product. In this time of constriction in the industry, it is a testament to the PA Breeders' hard work, as the PA-Bred horses going to the race track are one of the few growth sectors in the industry.

HCPN requests that the Racing Commission and Gaming Board contact the PA Breeders Association and request any additional information it deems important to supplement information that may have been omitted from this report. In addition, HCPN welcomes any feedback and proactive actions by the Thoroughbred Breeders to stimulate horse ownership and interest.

PART IV CLASS

1. *Furnish documentation of how the introduction of slot machine gaming at the licensed racetrack has enhanced live racing by improving the quality in the class of races over the calendar year. Please include the following:*
 - Type of race
 - Number of Races
 - Number of Starters

- Purses Paid

See Exhibit 8 for a detailed chart of this information from 2007 (pre-slot machine gaming at PNR) through 2016.

Also included is a chart of Claiming Activity (Exhibit 8) at HCPN from 2007 through 2016. This benchmark shows that there is still a strong interest in ownership of racehorses and that the economics of horse ownership are geared towards allowing individuals to invest in the industry through the claiming route. The number of claims has increased almost 200% from 2007 to 2016, dollars spent on claims has increased 300% from 2007 to 2016. The quality of races is also shown significant increases in the average claiming price from 2007 to 2016.

2. *Describe plans to improve class of horses in races for successive calendar year.*

Since 2007 average daily purse distribution has increased from \$70,000 to \$188,000 in 2012. In 2014 the average daily distribution began dropping to \$165,000 and eventually settled at \$148,000 per day in 2015 and 2016, as purse revenues from all sources faced increasing pressure and competition. The early increases in daily purses has brought an influx in not only an increased quantity of horses to race at HCPN, but a noticeable improvement in the overall quality of horses competing at the racetrack. This quality has not waned despite the decreases in 2014 and 2015 and actually continues to grow in 2016 as evidenced by the increase in the number of allowance and optional allowance races run year over year. This is illustrated in Exhibit 8.

HCPN has been transitioning its racing program from a predominately lower level claiming/conditioned racing product to a mid-level claiming and allowance racing format. New trainers and horses from around the country have applied and received stalls and interest continues to be high with new racing operations arriving daily. HCPN works closely with the PA-HBPA in order to create a balanced racing program and equitable purse distribution. Many of the lowest level claiming categories have been eliminated, and efforts will continue to refine the qualifying conditions throughout 2016 and going forward.

In 2012 HCPN and the PA-IIBPA agreed to, the largest stakes program at HCPN in over a decade. This included the richest race ever at HCPN, the \$500,000 Penn Mile, as detailed in Part I, Section 2. In 2015, the open stakes program was \$1.4 million, a slight reduction from the \$1.45 million offered in 2012 and 2013, but still ahead of the \$1.3 million in 2011 and \$720,000 in 2010. The 2016 the stakes schedule was scaled back slightly in value to stay consistent with the reductions in available purse dollars. HCPN is still in the lower echelon within the region in allocation of total available purses for stakes.

Despite the larger purses in recent years, HCPN must still compete against many other regional racetracks with enhanced purse supplements as well as large overlaps in racing dates. Competition in the Mid-Atlantic region is fierce for available, quality horses, with 11 thoroughbred racetracks within a four-hour radius of HCPN.

Even with the influx of available purse funds over recent history, trends in Thoroughbred breeding and training philosophies are cutting down on the number of horses available to race. This trend will cause continued problems for all racetracks going forward to offer

competitive, quality races with adequate field sizes to generate wagering interest from racing customers. Through 2012, 2013, 2014 and 2015, national field size took a precipitous drop and continues to be a major concern on a daily basis.

Through 2016, average field size for the year at HCPN was 7.50, an increase over 2014 and equal to 2015, but as mentioned earlier, driven by reduction in total number of races.

HCPN, and Penn National Gaming strongly believes that the horse racing industry, not only in Pennsylvania, but in the Mid-Atlantic region and nationally must seriously look at the number of live racing dates being offered, the available horses to fill those race cards and come to some coordinated effort to improve the wagering handle on races while also balancing the economic realities of horse ownership. Racing date mandates based on artificial numbers, not marketplace realities are detrimental in the long run in producing a quality product which is attractive to the wagering public.

HCPN is willing to take a leadership role in this area but needs the cooperation of other tracks, horsemen and racing commissions in order to make this effort succeed. To that end Penn National is involved in discussions with other Mid-Atlantic racing entities regarding coordinating stakes, racing dates and condition book information.

PART V. RESIDENCE

1. *Furnish documentation of how the introduction of slot machine gaming at the licensed racetrack has enhanced live racing by increasing the number of PA residents participating in the Commonwealth's racing industry throughout the calendar year. Please include the following:*

- A. **Number of PA residents participating at the track as owners and trainers**

In 2016 a total of 700 individuals listed as owners and/or trainers had registered accounts with the HCPN Horsemen's Bookkeeper with a Pennsylvania address. Another 91 Jockey accounts had PA addresses.

Exhibit 9 details the PA/Non-PA resident information for participants in racing at Penn National Race Course from 2007-2016.

- B. **Percentage of the whole that PA residents contribute to the total number of owners and trainers.**

In 2016 there were a total of 2,065 registered owners-trainers in the Horsemen's Bookkeeper system. PA residents accounted for 33% of those accounts (700).

In 2016 there were a total of 230 Jockey Accounts with 91 (38%) being PA residents.

Exhibit 9 details the PA/Non-PA resident information for participants in racing at Penn National Race Course from 2007-2016.

C. Total purse earnings of PA residents at track of owners (as determined by address of stable or lead owner) and trainers.

PA resident owners-trainers earned \$15,213,878 in purses in 2016 at HCPN. Total earnings by PA resident jockeys at HCPN in 2016 were \$2,228,325.

Exhibit 9 provides a breakdown of PA and Non-PA resident accounts for Jockeys and Trainers/Owners in our Horsemen's Bookkeeper System for 2007 through 2016.

D. Estimated amount of purse earnings of non-PA residents stabling horses at the track.

This is not an easily identifiable number, however, of the 85 individual trainers currently stabled on the grounds of HCPN, a total of 74 (87%) are PA residents.

2. *Provide strategy to increase participation of Pennsylvania residents in the PA racing industry for successive calendar year.*

HCPN feels that many of the improvements to the physical plant in the clubhouse, grandstand, and backstretch, have made HCPN more attractive for horse owners. Without question the influx of increase purses from Slot Machine Gaming has greatly benefited horse owners in making the cost proposition of horse ownership more attractive.

The creation of our marquee stakes events, like the \$500,000 Penn Mile, detailed in Part I, Section 2, and days like PA Owners Appreciation Day and detailed in Part III, Section 2, are focused on raising the profile of HCPN to PA residents in addition to providing them with additional opportunities to race horses bred in the Commonwealth and sired by stallions currently standing in the Commonwealth.

The statistics in Part III (Native Breeding Industry) clearly demonstrate that we are a leader in the Commonwealth in terms of opportunities on a daily basis for Pennsylvania-bred horses to compete for excellent purses. It follows that the majority of those racing PA-bred horses will be PA residents.

HCPN feels that programs designed for horse ownership should also be a priority of the PA-IIBPA and the Pennsylvania Thoroughbred Breeders. Seminars on ownership, meeting individuals such as trainers and breeders, tours of facilities, websites or information brochures on how to become an owner or how to purchase a racehorse are all opportunities that could be explored and have been utilized successfully at other racetracks and jurisdictions. HCPN would be happy to work with the PA-IIBPA and the Thoroughbred Breeders on constructive programs to encourage horse ownership in general, and specifically to PA residents.

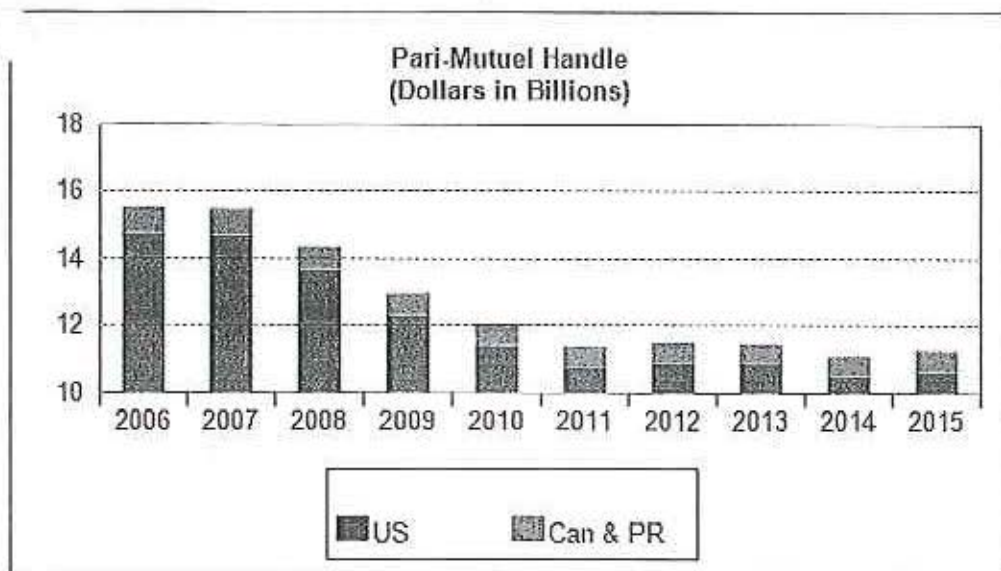
While we fully understand the intent to focus on the benefits of the racing program at HCPN towards existing residents of the Commonwealth, we hope that the Department of Agriculture, the Gaming Board and elected officials take a much broader view of the impact of slot machine gaming, and table games, on the horse racing industry in Pennsylvania.

Out-of-state owners and trainers make purchases in Pennsylvania, pay taxes in the state and employ individuals who work in the state. If their experience is a positive one, these out-of-

state residents will expand their commitment to Pennsylvania racing or may soon become permanent residents of the Commonwealth and establish even stronger economic ties to the state. Given HCPN's close proximity to Delaware, Maryland, New Jersey, New York, Virginia and West Virginia we are fortunate to have a steady influx of horsemen, owners, breeders and jockeys competing at our facility. This influx is positive for the overall racing program in creating diversity and improving the quality of the racing, which may grow attendance and handle. These out-of-state individuals will also purchase PA-bred horses, stable, board and breed their horses in the state, claim horses at PA tracks from PA-based trainers and owners and provide significant value to the racing programs at all PA racetracks. We view all of these activities as beneficial in the long-term for the Commonwealth of Pennsylvania.

HCPNRC and Penn National Gaming, Inc. greatly appreciate the opportunity to address both the Pennsylvania State Horse Racing Commission and the Pennsylvania Gaming Control Board in detailing our past, current and future efforts as it relates to the investment and improvement of horse racing at Penn National Race Course and for horse racing in general in the Commonwealth.

PARI-MUTUEL HANDLE

[Go Back](#)

Pari-Mutuel Handle

UNITED STATES*

CANADA*

PUERTO RICO*

Year	UNITED STATES*				CANADA*			PUERTO RICO*			Total*
	On Track	Off Track	Total	% Change	On Track	Off Track	Total	On Track	Off Track	Total	
1990	-	-	9,385	1.1	-	-	823	-	-	-	10,208
1991	-	-	9,393	0.1	-	-	804	-	-	-	10,198
1992	-	-	9,639	2.6	-	-	770	-	-	-	10,409
1993	-	-	9,600	-0.4	-	-	731	-	-	-	10,331
1994	-	-	9,897	3.1	-	-	681	-	-	-	10,578
1995	-	-	10,429	5.4	-	-	795	-	-	-	11,224
1996	2,944	8,683	11,627	11.5	259	383	642	10	257	267	12,536
1997	2,703	9,839	12,542	7.9	217	310	527	9	249	258	13,327
1998	2,498	10,617	13,115	4.6	188	310	498	7	185	192	13,805
1999	2,359	11,365	13,724	4.6	161	278	439	7	238	245	14,408
2000	2,270	12,051	14,321	4.4	150	325	475	10	236	246	15,042
2001	2,112	12,487	14,599	1.9	153	387	540	8	208	216	15,355
2002	2,029	13,033	15,062	3.2	153	414	567	8	221	229	15,858
2003	1,902	13,278	15,180	0.8	139	397	536	8	218	226	15,942
2004	1,860	13,239	15,099	-0.5	137	364	501	8	228	236	15,836
2005	1,741	12,820	14,561	-3.6	144	424	568	8	239	247	15,376
2006	1,688	13,097	14,785	1.5	109	419	528	8	229	237	15,550
2007	1,670	13,055	14,725	-0.4	132	375	507	8	206	214	15,446
2008	1,489	12,173	13,662	-7.2	96	393	489	7	188	195	14,346
2009	1,325	10,990	12,315	-9.9	87	403	490	6	162	168	12,973
2010	1,199	10,220	11,419	-7.3	78	425	503	5	149	154	12,076
2011	1,229	9,541	10,770	-5.7	73	449	522	5	140	145	11,437
2012	1,239	9,643	10,882	1.0	70	486	556	6	127	133	11,571

2013	1,185	9,692	10,877	-0.0	58	431	489	5	113	118	11,484
2014	1,175	9,377	10,552	-3.0	56	414	470	4	94	98	11,120
2015	1,122	9,553	10,675	1.2	47	470	517	4	94	98	11,290
2016	1,058	9,686	10,744	0.6	55	508	563	5	86	91	11,398

* Dollars in millions

Note: There was a \$9 million reconciliation (.085%) in total handle for 2010.

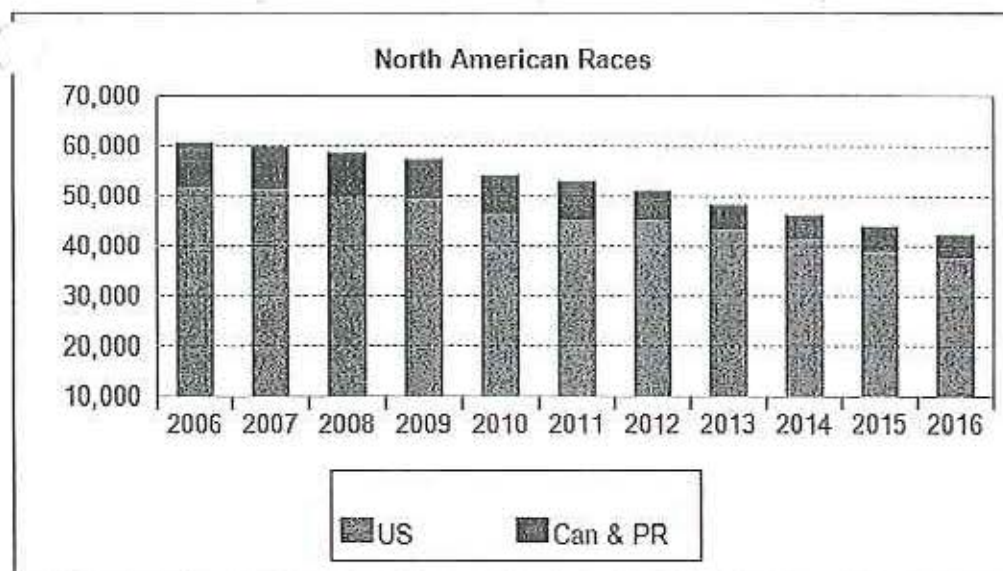
Wagring totals for the U.S., Canada and Puerto Rico include wagering from all sources on race days with at least one Thoroughbred race as reported to Equibase.

In some instances, totals may not equal the sum of on-track and off-track figures due to rounding.

Includes worldwide commingled wagers on races in the U.S., Canada and Puerto Rico and separate pool wagering on U.S. races.

Sources: Equibase Company LLC, CHRIMS (Comprehensive Horse Racing Information Management Systems), and Hipodromo Camarero

NUMBER OF RACES

[Go Back](#)

Number of Races

North American Races by Decade

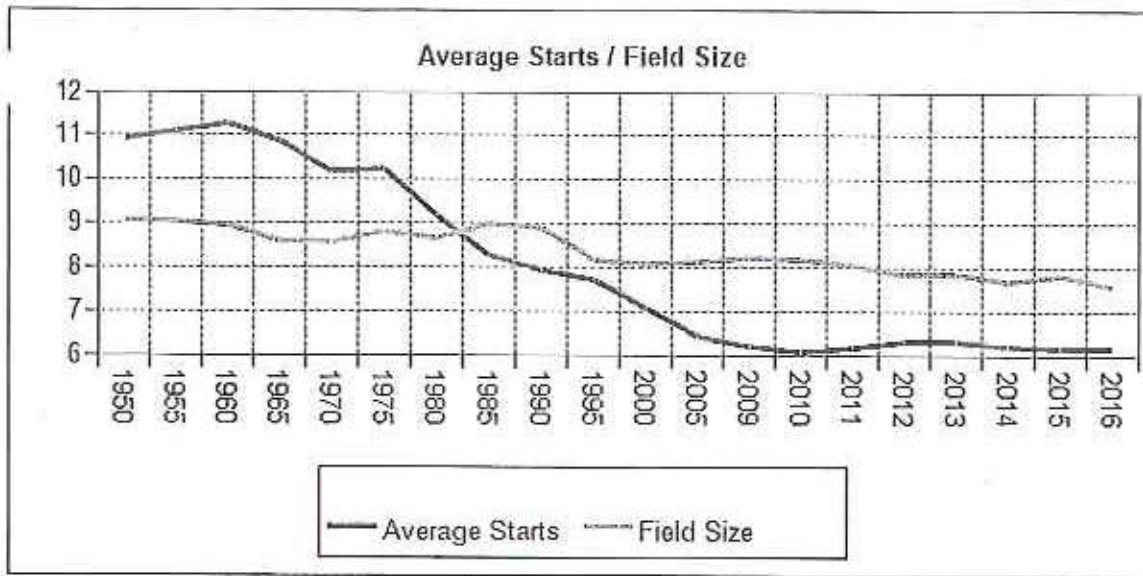
Year	United States	Percent Change	Canada	Puerto Rico	Total	Total Percent Change
1989	74,071	4.3	7,329	1,308	82,708	3.9
1990	72,664	-1.9	7,307	1,402	81,373	-1.6
1991	71,689	-1.3	7,614	1,433	80,736	-0.8
1992	70,393	-1.8	7,319	1,537	79,249	-1.8
1993	65,354	-7.2	6,988	1,627	73,969	-6.7
1994	64,118	-1.9	6,581	1,645	72,344	-2.2
1995	61,971	-3.3	6,281	3,420	71,672	-0.9
1996	58,260	-6.0	6,130	3,840	68,230	-4.8
1997	57,831	-0.7	5,656	3,868	67,355	-1.3
1998	55,796	-3.5	5,399	3,238	64,433	-4.3
1999	54,644	-2.1	5,538	3,782	63,964	-0.7
2000	55,486	1.5	5,386	4,010	64,882	1.4
2001	55,128	-0.6	5,611	4,192	64,931	0.1
2002	54,304	-1.5	5,592	4,074	63,970	-1.5
2003	53,500	-1.5	5,498	3,780	62,778	-1.9
2004	53,595	0.2	5,263	3,868	62,726	-0.1
2005	52,257	-2.5	5,238	3,896	61,391	-2.1
2006	51,668	-1.1	5,234	3,898	60,800	-1.0
2007	51,304	-0.7	5,057	3,750	60,111	-1.1
2008	50,120	-2.3	4,950	3,810	58,880	-2.0
2009	49,368	-1.5	4,753	3,726	57,847	-1.8

2010	46,379	-6.1	4,539	3,706	54,624	-5.6
2011	45,417	-2.1	4,376	3,580	53,373	-2.3
2012	45,086	-0.7	4,295	1,820	51,201	-4.1
2013	43,139	-4.3	3,674	1,766	48,579	-5.1
2014	41,276	-4.3	3,363	1,649	46,288	-4.7
2015	38,941	-5.7	3,278	1,730	43,949	-5.1
2016	37,614	-3.4	3,242	1,768	42,624	-3.0

Includes non-wagering steeplechase races.

Sources: Equibase Company LLC and Hipodromo Camarero

SIZE OF FIELD AND STARTS PER HORSE

[Go Back](#)

Size of Field and Starts Per Horse

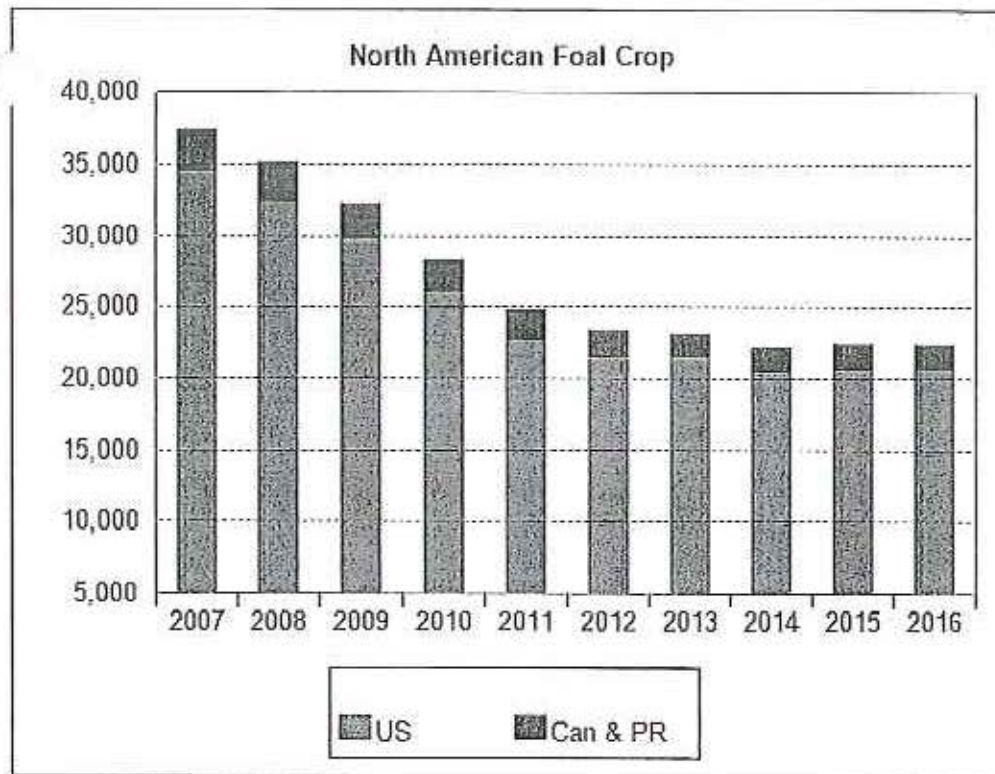
Year	Starters	Races	Starts	Avg. Field	Avg. Starts/Runner
1950	22,388	26,932	244,343	9.07	10.91
1955	25,924	31,757	287,775	9.06	11.10
1960	29,798	37,661	337,060	8.95	11.31
1965	37,386	47,335	406,646	8.59	10.88
1970	47,778	56,676	488,326	8.62	10.22
1975	58,816	68,210	601,780	8.82	10.23
1980	64,506	68,243	593,849	8.70	9.21
1985	82,548	75,687	683,667	9.03	8.28
1990	89,716	79,971	712,494	8.91	7.94
1991	86,937	79,303	693,614	8.75	7.98
1992	83,404	77,712	669,967	8.62	8.03
1993	78,740	72,342	618,974	8.56	7.86
1994	74,955	70,699	587,404	8.31	7.84
1995	72,399	68,248	559,669	8.20	7.73
1996	70,450	64,388	534,861	8.31	7.59
1997	69,056	63,487	520,880	8.20	7.54
1998	68,697	61,293	500,710	8.17	7.29
1999	68,678	60,182	493,926	8.21	7.19
2000	69,569	60,872	493,682	8.11	7.10
2001	71,278	60,738	496,604	8.18	6.97
2002	72,825	59,896	495,228	8.27	6.80
2003	73,918	59,001	489,503	8.30	6.62
2004	74,206	58,858	487,428	8.28	6.57
2005	72,780	57,495	469,644	8.17	6.45
2006	72,729	56,902	462,937	8.14	6.37

2007	72,966	56,361	460,492	8.17	6.31
2008	72,638	55,069	450,095	8.17	6.20
2009	71,662	54,121	446,196	8.24	6.23
2010	68,235	50,918	417,192	8.19	6.11
2011	64,625	49,794	400,408	8.04	6.20
2012	61,863	49,381	389,568	7.89	6.30
2013	58,138	46,814	367,567	7.85	6.32
2014	55,198	44,640	343,397	7.69	6.22
2015	53,365	42,219	329,974	7.82	6.18
2016	52,049	42,564	322,878	7.59	6.20

Before 2016, figures included U.S. and Canada only

Source: Equibase Company LLC

ANNUAL NORTH AMERICAN REGISTERED FOAL CROP

[Go Back](#)

Annual North American Registered Foal Crop

Year	United States	Percent Change	Canada	Puerto Rico	Total North American	Percent Change
1990	40,333	-8.2	3,193	617	44,143	-7.5
1991	38,151	-5.4	3,025	628	41,804	-5.3
1992	35,051	-8.1	2,777	610	38,438	-8.1
1993	33,822	-3.5	2,713	605	37,140	-3.4
1994	32,118	-5.0	2,591	632	35,341	-4.8
1995	31,884	-0.7	2,446	653	34,983	-1.0
1996	32,243	1.1	2,397	726	35,366	1.1
1997	32,119	-0.4	2,284	740	35,143	-0.6
1998	32,947	2.6	2,340	734	36,021	2.5
1999	33,844	2.7	2,435	650	36,929	2.5
2000	34,728	2.6	2,465	562	37,755	2.2
2001	34,721	-0.0	2,590	590	37,901	0.4
2002	32,986	-5.0	2,468	524	35,978	-5.1
2003	33,976	3.0	2,576	515	37,067	3.0
2004	34,800	2.4	2,615	534	37,949	2.4
2005	35,050	0.7	2,788	527	38,365	1.1
2006	34,905	-0.4	2,643	556	38,104	-0.7
2007	34,358	-1.6	2,546	595	37,499	-1.6
2008	32,332	-5.9	2,382	560	35,274	-5.9

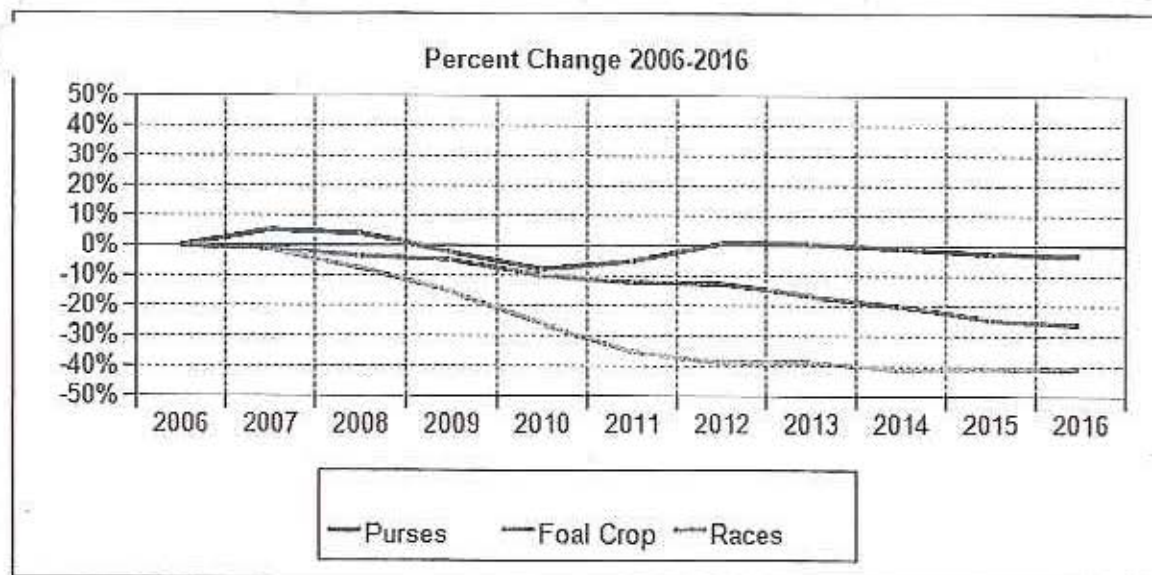
2009	29,612	-8.4	2,323	429	32,364	-8.2
2010	25,953	-12.4	2,118	347	28,418	-12.2
2011	22,644	-12.7	1,991	295	24,930	-12.3
2012	21,463	-5.2	1,991	290	23,744	-4.8
2013	21,405	-0.3	1,533	284	23,222	-2.2
2014	21,334	-0.3	1,284	287	22,905	-1.4
2015	20,850*	-2.3	1,350*	300*	22,500*	-1.8
2016	20,850*	0.0	1,350*	300*	22,500*	0.0

* Estimated figures

Foal crops are estimated against Reports of Mares Bred, scheduled to be filed by Aug. 1 of each breeding season. Foal registration is to be completed within 12 months of the birth of the foal. However, late registration is available for additional fees, making actual foal crop counts impractical before Dec. 31 of the crop's 2-year-old year, the time by which the vast majority of the foal crop has been registered.

Source: The Jockey Club

TRENDS IN US RACES, PURSES AND FOAL CROPS

[Go Back](#)

Trends in US Races, Purses and Foal Crops

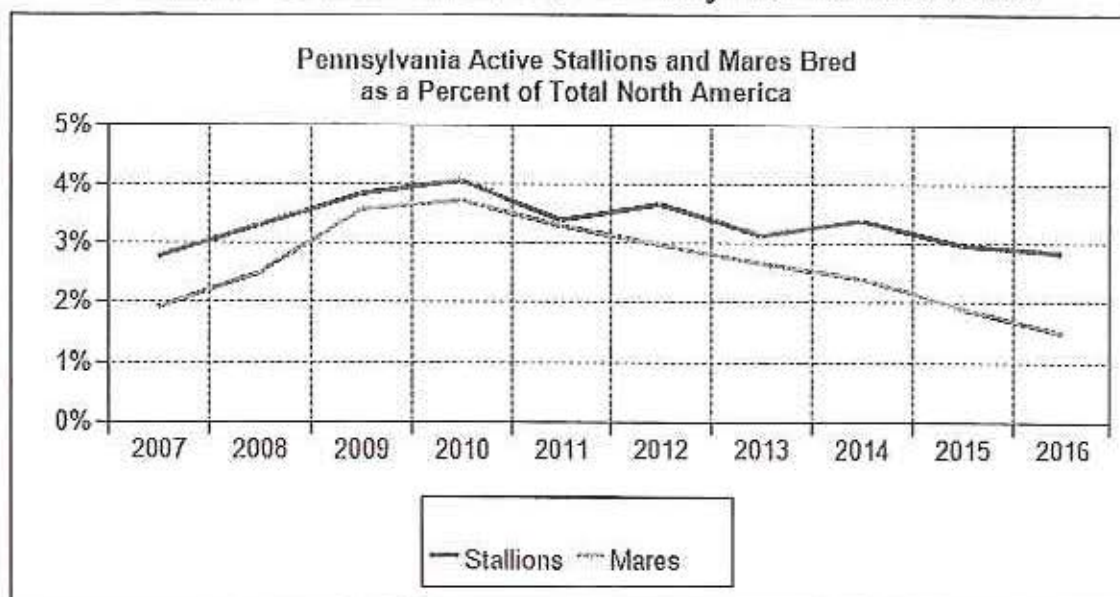
Year	Total US Foal Crop	Number Of US Races	Total US Purses	Total US Starters	Avg. Purse Per Starter	Avg. Purse Per Race
1988	45,258	71,014	676,797,744	83,021	8,152	9,530
1989	44,250	74,071	706,940,245	83,893	8,427	9,544
1990	40,333	72,664	714,480,213	82,314	8,680	9,833
1991	38,151	71,689	698,654,071	80,238	8,707	9,746
1992	35,051	70,393	709,565,534	76,943	9,222	10,080
1993	33,822	65,354	692,123,219	72,567	9,538	10,590
1994	32,118	64,118	718,439,110	69,583	10,325	11,205
1995	31,884	61,969	761,582,751	67,021	11,363	12,290
1996	32,243	58,259	792,704,873	65,108	12,175	13,607
1997	32,119	57,832	851,462,820	64,099	13,284	14,723
1998	32,947	55,894	904,014,631	63,798	14,170	16,174
1999	33,844	54,644	962,853,553	63,547	15,152	17,620
2000	34,728	55,486	1,030,879,290	64,443	15,997	18,579
2001	34,721	55,127	1,067,490,193	65,829	16,216	19,364
2002	32,986	54,304	1,074,247,738	67,009	16,031	19,782
2003	33,976	53,503	1,055,496,849	68,249	15,465	19,728
2004	34,800	53,595	1,092,085,465	68,569	15,927	20,377
2005	35,050	52,257	1,085,005,415	66,903	16,218	20,763
2006	34,905	51,668	1,120,350,012	66,733	16,789	21,684
2007	34,358	51,304	1,180,587,881	67,261	17,552	23,012
2008	32,332	50,119	1,165,042,722	67,061	17,373	23,246
2009	29,612	49,368	1,098,194,699	66,104	16,613	22,245
2010	25,953	46,379	1,031,317,175	62,994	16,372	22,237
2011	22,644	45,418	1,061,210,889	59,896	17,718	23,365

2012	21,463	45,086	1,127,775,188	57,331	19,671	25,014
2013	21,405	43,139	1,127,210,117	54,187	20,802	26,130
2014	21,334	41,277	1,111,715,735	51,695	21,505	26,933
2015	20,600*	38,941	1,093,667,288	49,960	21,891	28,085
2016	20,600*	38,284	1,083,696,320	48,612	22,293	28,307

*Estimated Figures

Source: Equibase Company LLC

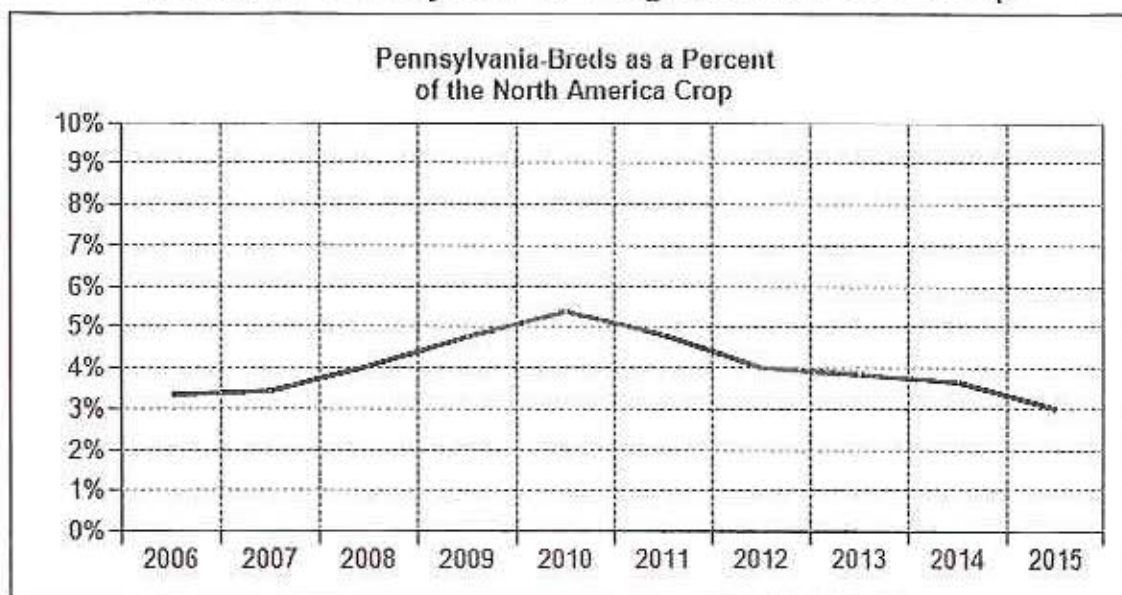
Annual Mares Bred to Pennsylvania Stallions



Year	Mares Bred	Pct. of NA	Stallions	Pct. of NA	Avg. Book Size	Avg. NA Book Size
1995	831	1.4	143	2.5	5.8	10.5
1996	805	1.4	137	2.5	5.9	11.0
1997	851	1.4	135	2.6	6.3	11.5
1998	895	1.5	120	2.4	7.5	12.1
1999	992	1.6	124	2.6	8.0	12.7
2000	1,016	1.6	123	2.6	8.3	13.5
2001	976	1.5	117	2.5	8.3	13.7
2002	1,026	1.6	109	2.4	9.4	14.1
2003	1,027	1.6	121	2.7	8.5	14.2
2004	1,027	1.6	120	2.7	8.6	14.6
2005	1,210	1.9	129	3.1	9.4	15.1
2006	1,159	1.8	122	3.0	9.5	15.5
2007	1,173	1.9	106	2.8	11.1	15.8
2008	1,414	2.5	120	3.3	11.8	15.6
2009	1,753	3.6	128	3.8	13.7	14.8
2010	1,650	3.7	126	4.1	13.1	14.2
2011	1,313	3.3	95	3.4	13.8	14.2
2012	1,118	3.0	94	3.7	11.9	14.7
2013	971	2.7	73	3.1	13.3	15.6
2014	905	2.4	77	3.4	11.8	16.6
2015	707	1.9	59	3.0	12.0	18.7
2016	529	1.5	49	2.8	10.8	20.6

Figures as of 06/01/2017

Annual Pennsylvania Registered Foal Crop



Crop Year	Pennsylvania	North America	Pct. of NA Crop
1995	763	34,983	2.2
1996	846	35,366	2.4
1997	898	35,143	2.6
1998	918	36,021	2.5
1999	978	36,929	2.6
2000	923	37,755	2.4
2001	914	37,901	2.4
2002	873	35,978	2.4
2003	1,039	37,067	2.8
2004	984	37,949	2.6
2005	1,257	38,365	3.3
2006	1,266	38,104	3.3
2007	1,281	37,499	3.4
2008	1,432	35,274	4.1
2009	1,540	32,364	4.8
2010	1,534	28,418	5.4
2011	1,197	24,930	4.8
2012	946	23,744	4.0
2013	897	23,222	3.9
2014	838	22,905	3.7
2015	669	22,500 *	3.0

* Estimated figure

Figures as of 06/01/2017

Foaling Area of Pennsylvania-Sired Registered Foals

Crop Year

Foaling Area	2015	2014	2013	2012	2011
PA	351	423	478	523	670
MD	51	46	69	38	43
NJ	15	18	14	26	25
WV	10	9	31	22	35
OH	8	4	11	8	1
FL	7	5	4	3	7
NY	6	13	17	12	7
KY	4	12	11	11	13
LA	1	1	1	2	4
AR	1	0	1	1	1
DE	1	0	0	1	0
MB	1	0	0	0	0
VA	1	7	10	11	16
WA	0	0	1	0	0
SC	0	1	0	1	0
TN	0	1	1	0	0
CA	0	1	0	11	1
MA	0	0	0	3	0
IA	0	2	0	0	4
IL	0	1	0	0	2
IN	0	10	2	0	3
OK	0	0	0	0	1
ON	0	2	2	0	4
NM	0	0	0	0	1
MI	0	1	1	0	0
MN	0	1	1	1	0
MO	0	0	0	1	0
NC	0	0	0	0	2
ND	0	0	0	0	1
Total	457	558	655	675	841

Note: Figures include only foals born in the U.S., Canada and Puerto Rico.
 Ranked by number of registered foals in 2015
 Figures as of 06/01/2017

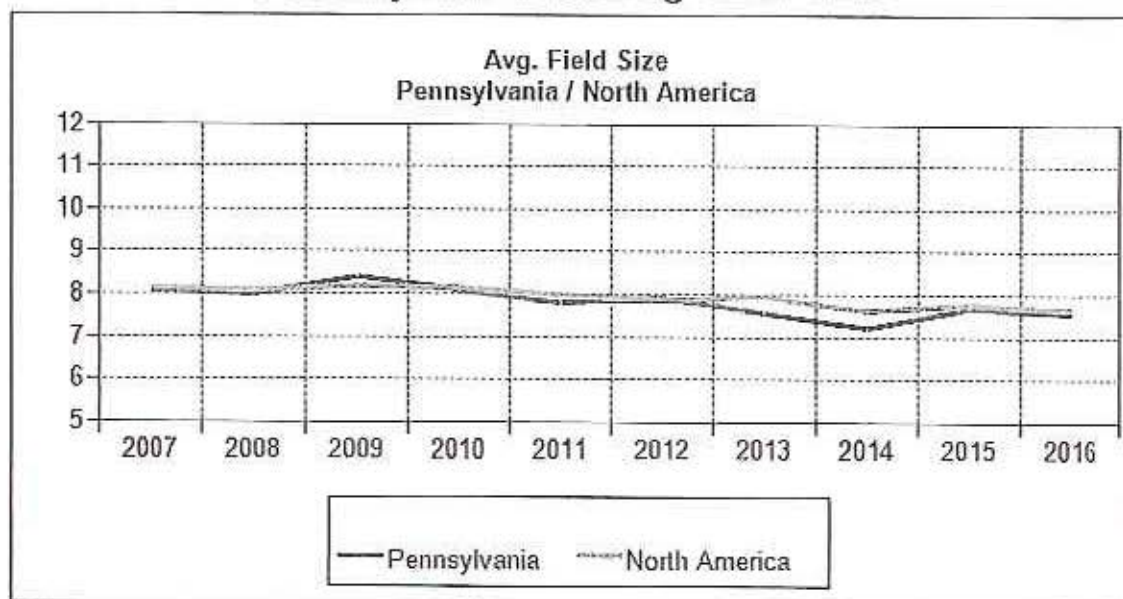
Conception Area of Pennsylvania-Bred Registered Foals

Crop Year

Conception Area	2015	2014	2013	2012	2011
PA	351	423	478	523	670
KY	211	294	300	292	380
MD	61	62	53	63	59
NY	26	28	35	22	25
FL	8	16	18	21	28
MI	5	6	1	6	5
NJ	2	2	5	7	6
OH	2	0	0	0	1
WV	2	6	2	7	10
CA	1	0	0	0	4
IL	0	0	1	0	1
IN	0	0	0	2	2
LA	0	0	1	2	1
OK	0	0	0	0	1
ON	0	1	3	0	3
TX	0	0	0	0	1
Total	669	838	897	945	1,197

Note: Figures include only foals conceived in the U.S., Canada and Puerto Rico and where the conception area is known. Ranked by number of registered foals in 2015. Figures as of 06/01/2017

Pennsylvania Racing Overview



Year	Races	Purses	Starters	Starts	Race Days	Avg. Field Size	Avg. Purse per Race
1996	3,983	38,829,008	6,139	32,399	410	8.1	9,749
1997	4,166	41,547,849	6,011	33,190	434	8.0	9,973
1998	4,157	43,440,043	5,888	31,960	430	7.7	10,450
1999	3,528	41,437,720	5,650	27,450	377	7.8	11,745
2000	3,886	49,336,506	5,918	28,680	417	7.4	12,696
2001	3,992	50,872,129	6,364	31,207	428	7.8	12,744
2002	3,844	47,429,957	6,215	30,598	415	8.0	12,339
2003	3,851	45,735,528	6,398	31,460	411	8.2	11,876
2004	3,825	47,629,851	6,683	31,355	415	8.2	12,452
2005	3,681	49,313,407	6,278	30,348	402	8.2	13,397
2006	3,374	42,905,234	5,460	26,978	367	8.0	12,716
2007	3,748	76,277,854	7,400	30,214	408	8.1	20,352
2008	4,427	110,225,084	9,256	35,409	498	8.0	24,898
2009	4,585	115,231,435	9,867	38,421	511	8.4	25,132
2010	4,519	116,402,057	9,414	36,696	501	8.1	25,758
2011	4,464	123,470,108	8,723	34,761	502	7.8	27,659
2012	4,459	127,991,065	8,359	35,294	499	7.9	28,704
2013	4,350	115,572,131	7,453	32,903	495	7.8	26,568
2014	4,211	107,333,140	6,758	30,307	489	7.2	25,489
2015	3,950	108,865,233	6,909	30,315	472	7.7	27,561
2016	3,710	102,997,462	6,504	28,236	442	7.6	27,762

Note: Purses represent all available money, including monies not won and returned to state breeder or other funds.

Month	On Track	York	Lancaster
January	15,113	2,989	2,298
February	13,509	3,544	2,456
March	21,203	3,638	2,443
April	19,569	3,833	2,776
May	24,778	7,293	5,338
June	25,693	4,156	3,077
July	23,218	3,626	2,702
August	19,926	3,245	2,496
September	16,870	2,912	2,272
October	16,121	3,328	2,355
November	18,259	3,405	2,507
December	15,392	3,084	2,121
Grand Total	229,651	45,053	32,841

2016 Attendance by Location

Date	OnTrack	York	Lancaster
01-Jan-16	173	125	88
02-Jan-16	210	237	175
03-Jan-16	95	117	76
04-Jan-16	42	60	15
05-Jan-16	26	46	17
06-Jan-16	1009	114	70
07-Jan-16	734	79	68
08-Jan-16	1196	162	115
09-Jan-16	1247	237	149
10-Jan-16	85	98	86
11-Jan-16	27	53	21
12-Jan-16	51	35	24
13-Jan-16	712	112	59
14-Jan-16	795	129	72
15-Jan-16	1402	155	146
16-Jan-16	1301	239	143
17-Jan-16	119	101	77
18-Jan-16	92	83	56
19-Jan-16	29	49	15
20-Jan-16	595	92	48
21-Jan-16	821	99	107
22-Jan-16	93	101	86
23-Jan-16	0	0	0
24-Jan-16	27	0	0
25-Jan-16	23	27	0
26-Jan-16	6	0	5
27-Jan-16	713	0	72
28-Jan-16	760	0	85
29-Jan-16	1106	0	132
30-Jan-16	1478	282	201
31-Jan-16	147	157	90
01-Feb-16	37	65	56
02-Feb-16	32	52	26
03-Feb-16	666	75	48
04-Feb-16	926	139	105
05-Feb-16	1067	177	126
06-Feb-16	1446	236	173
07-Feb-16	88	105	84
08-Feb-16	34	59	49
09-Feb-16	20	25	11
10-Feb-16	758	109	66
11-Feb-16	67	146	82
12-Feb-16	945	154	132

13-Feb-16	281	185	103
14-Feb-16	123	128	79
15-Feb-16	79	64	53
16-Feb-16	31	49	14
17-Feb-16	63	91	64
18-Feb-16	103	142	122
19-Feb-16	197	176	126
20-Feb-16	1807	248	165
21-Feb-16	140	135	93
22-Feb-16	36	57	57
23-Feb-16	20	52	11
24-Feb-16	590	85	60
25-Feb-16	735	120	85
26-Feb-16	1285	176	115
27-Feb-16	1729	305	188
28-Feb-16	165	134	102
29-Feb-16	36	55	61
01-Mar-16	59	44	33
02-Mar-16	917	82	48
03-Mar-16	942	130	87
04-Mar-16	1379	187	131
05-Mar-16	1812	234	169
06-Mar-16	173	121	104
07-Mar-16	29	61	47
08-Mar-16	34	49	27
09-Mar-16	807	89	44
10-Mar-16	849	137	54
11-Mar-16	1295	161	135
12-Mar-16	1669	303	165
13-Mar-16	211	127	111
14-Mar-16	51	45	55
15-Mar-16	66	49	23
16-Mar-16	830	92	53
17-Mar-16	790	108	124
18-Mar-16	1236	157	125
19-Mar-16	1616	202	179
20-Mar-16	208	128	78
21-Mar-16	47	50	17
22-Mar-16	50	38	27
23-Mar-16	732	96	48
24-Mar-16	772	111	72
25-Mar-16	1388	185	134
26-Mar-16	1608	289	168
27-Mar-16	71	56	0
28-Mar-16	27	56	60
29-Mar-16	46	39	32
30-Mar-16	689	108	48

31-Mar-16	801	104	45
01-Apr-16	1318	195	131
02-Apr-16	1614	281	192
03-Apr-16	171	140	107
04-Apr-16	52	57	57
05-Apr-16	49	45	23
06-Apr-16	650	116	66
07-Apr-16	690	104	80
08-Apr-16	1243	182	140
09-Apr-16	383	296	197
10-Apr-16	251	140	82
11-Apr-16	22	51	45
12-Apr-16	57	55	30
13-Apr-16	757	118	70
14-Apr-16	644	110	74
15-Apr-16	1177	148	115
16-Apr-16	1817	220	156
17-Apr-16	141	129	85
18-Apr-16	33	36	50
19-Apr-16	54	37	18
20-Apr-16	793	106	52
21-Apr-16	699	86	126
22-Apr-16	1155	149	108
23-Apr-16	1625	235	166
24-Apr-16	129	122	91
25-Apr-16	63	52	43
26-Apr-16	74	31	27
27-Apr-16	752	119	57
28-Apr-16	615	94	77
29-Apr-16	1177	157	139
30-Apr-16	1366	222	172
01-May-16	168	93	91
02-May-16	34	65	55
03-May-16	74	60	32
04-May-16	96	110	74
05-May-16	915	145	90
06-May-16	2507	765	496
07-May-16	4807	1842	1514
08-May-16	1259	114	102
09-May-16	49	77	59
10-May-16	65	38	24
11-May-16	112	35	65
12-May-16	793	116	92
13-May-16	1279	173	146
14-May-16	1720	224	162
15-May-16	135	116	100
16-May-16	41	36	63

17-May-16	45	48	35
18-May-16	86	83	59
19-May-16	973	101	117
20-May-16	1832	531	271
21-May-16	3431	1422	968
22-May-16	215	161	90
23-May-16	49	54	75
24-May-16	41	35	18
25-May-16	65	74	51
26-May-16	784	102	76
27-May-16	1123	140	110
28-May-16	1754	243	124
29-May-16	150	137	5
30-May-16	145	117	138
31-May-16	33	36	36
01-Jun-16	655	99	60
02-Jun-16	772	99	70
03-Jun-16	1082	158	135
04-Jun-16	3728	227	160
05-Jun-16	186	112	69
06-Jun-16	47	53	59
07-Jun-16	37	47	30
08-Jun-16	668	90	56
09-Jun-16	813	113	82
10-Jun-16	2380	401	250
11-Jun-16	3446	943	679
12-Jun-16	231	91	97
13-Jun-16	53	48	52
14-Jun-16	49	38	24
15-Jun-16	761	86	60
16-Jun-16	715	112	122
17-Jun-16	1325	141	135
18-Jun-16	2001	229	139
19-Jun-16	141	123	60
20-Jun-16	55	48	50
21-Jun-16	50	45	23
22-Jun-16	688	93	41
23-Jun-16	761	108	61
24-Jun-16	1288	131	135
25-Jun-16	1943	199	160
26-Jun-16	160	120	83
27-Jun-16	46	32	49
28-Jun-16	75	40	24
29-Jun-16	725	74	39
30-Jun-16	814	56	73
01-Jul-16	1591	138	130
02-Jul-16	2125	221	140

03-Jul-16	168	136	89
04-Jul-16	172	154	100
05-Jul-16	47	40	27
06-Jul-16	835	81	52
07-Jul-16	810	85	81
08-Jul-16	1288	142	128
09-Jul-16	1875	240	145
10-Jul-16	117	104	70
11-Jul-16	43	37	40
12-Jul-16	40	32	33
13-Jul-16	625	100	49
14-Jul-16	819	98	74
15-Jul-16	1111	153	133
16-Jul-16	1870	211	136
17-Jul-16	145	99	82
18-Jul-16	53	43	51
19-Jul-16	29	45	29
20-Jul-16	843	73	46
21-Jul-16	867	91	103
22-Jul-16	1415	144	137
23-Jul-16	1665	207	148
24-Jul-16	148	131	89
25-Jul-16	89	67	53
26-Jul-16	23	35	23
27-Jul-16	799	107	63
28-Jul-16	576	100	65
29-Jul-16	1420	146	123
30-Jul-16	1452	243	159
31-Jul-16	157	123	104
01-Aug-16	581	52	65
02-Aug-16	52	33	15
03-Aug-16	642	87	65
04-Aug-16	862	106	77
05-Aug-16	1212	131	115
06-Aug-16	2066	240	173
07-Aug-16	130	115	88
08-Aug-16	88	64	61
09-Aug-16	54	49	35
10-Aug-16	691	100	52
11-Aug-16	670	114	64
12-Aug-16	1260	135	116
13-Aug-16	1789	214	133
14-Aug-16	147	123	86
15-Aug-16	61	48	63
16-Aug-16	22	40	23
17-Aug-16	780	90	65
18-Aug-16	788	81	120

19-Aug-16	1243	132	105
20-Aug-16	1866	204	138
21-Aug-16	130	97	84
22-Aug-16	42	50	68
23-Aug-16	26	29	24
24-Aug-16	688	103	61
25-Aug-16	632	93	69
26-Aug-16	1263	147	127
27-Aug-16	1795	273	164
28-Aug-16	174	122	93
29-Aug-16	41	54	54
30-Aug-16	28	31	32
31-Aug-16	103	88	61
01-Sep-16	848	96	83
02-Sep-16	1381	138	129
03-Sep-16	1808	179	137
04-Sep-16	150	138	90
05-Sep-16	188	129	76
06-Sep-16	19	44	29
07-Sep-16	35	77	51
08-Sep-16	656	91	67
09-Sep-16	1081	118	94
10-Sep-16	1255	177	124
11-Sep-16	86	91	66
12-Sep-16	17	38	54
13-Sep-16	19	36	30
14-Sep-16	70	61	48
15-Sep-16	760	87	117
16-Sep-16	1043	127	94
17-Sep-16	1388	173	127
18-Sep-16	96	94	69
19-Sep-16	18	40	51
20-Sep-16	26	30	20
21-Sep-16	49	70	51
22-Sep-16	611	112	76
23-Sep-16	1127	114	111
24-Sep-16	1781	212	149
25-Sep-16	139	63	63
26-Sep-16	21	29	37
27-Sep-16	35	33	14
28-Sep-16	628	84	42
29-Sep-16	542	80	60
30-Sep-16	992	151	113
01-Oct-16	1109	224	128
02-Oct-16	135	80	76
03-Oct-16	44	50	61
04-Oct-16	77	40	29

05-Oct-16	503	96	55
06-Oct-16	620	98	66
07-Oct-16	1029	141	92
08-Oct-16	1407	260	135
09-Oct-16	106	98	61
10-Oct-16	75	72	76
11-Oct-16	53	33	27
12-Oct-16	595	84	39
13-Oct-16	678	102	67
14-Oct-16	976	152	116
15-Oct-16	1288	223	115
16-Oct-16	95	81	89
17-Oct-16	28	58	68
18-Oct-16	36	41	39
19-Oct-16	641	111	44
20-Oct-16	650	65	125
21-Oct-16	979	154	126
22-Oct-16	1291	209	117
23-Oct-16	102	108	66
24-Oct-16	26	39	51
25-Oct-16	38	38	26
26-Oct-16	511	88	69
27-Oct-16	620	97	68
28-Oct-16	916	158	126
29-Oct-16	1376	188	110
30-Oct-16	95	98	50
31-Oct-16	24	42	38
01-Nov-16	54	42	36
02-Nov-16	630	85	54
03-Nov-16	772	107	69
04-Nov-16	1656	328	221
05-Nov-16	2168	453	335
06-Nov-16	80	87	79
07-Nov-16	73	43	53
08-Nov-16	74	52	32
09-Nov-16	541	89	68
10-Nov-16	833	107	77
11-Nov-16	1085	151	113
12-Nov-16	1419	209	133
13-Nov-16	104	92	72
14-Nov-16	42	38	48
15-Nov-16	41	38	29
16-Nov-16	622	95	64
17-Nov-16	688	97	97
18-Nov-16	1009	144	113
19-Nov-16	1153	176	112
20-Nov-16	135	93	66

21-Nov-16	37	45	42
22-Nov-16	38	43	23
23-Nov-16	1592	137	84
24-Nov-16	56	0	38
25-Nov-16	1342	194	115
26-Nov-16	1223	174	123
27-Nov-16	97	101	79
28-Nov-16	45	58	53
29-Nov-16	30	43	32
30-Nov-16	621	84	47
01-Dec-16	743	109	68
02-Dec-16	1161	158	109
03-Dec-16	1229	214	129
04-Dec-16	118	101	69
05-Dec-16	25	56	63
06-Dec-16	23	45	24
07-Dec-16	679	119	57
08-Dec-16	496	106	32
09-Dec-16	931	130	102
10-Dec-16	1224	165	121
11-Dec-16	92	65	67
12-Dec-16	38	50	55
13-Dec-16	30	49	27
14-Dec-16	675	87	65
15-Dec-16	42	104	77
16-Dec-16	784	144	109
17-Dec-16	896	145	102
18-Dec-16	113	93	69
19-Dec-16	19	32	39
20-Dec-16	26	49	17
21-Dec-16	749	103	54
22-Dec-16	744	99	58
23-Dec-16	1279	128	121
24-Dec-16	0	0	0
25-Dec-16	0	0	0
26-Dec-16	161	108	81
27-Dec-16	35	55	29
28-Dec-16	866	115	68
29-Dec-16	803	100	82
30-Dec-16	1200	179	119
31-Dec-16	210	176	108
	229651	45053	32841

**ELEVATOR TO
CASINO & RACING**

ELEVATOR

PARKING LEVELS

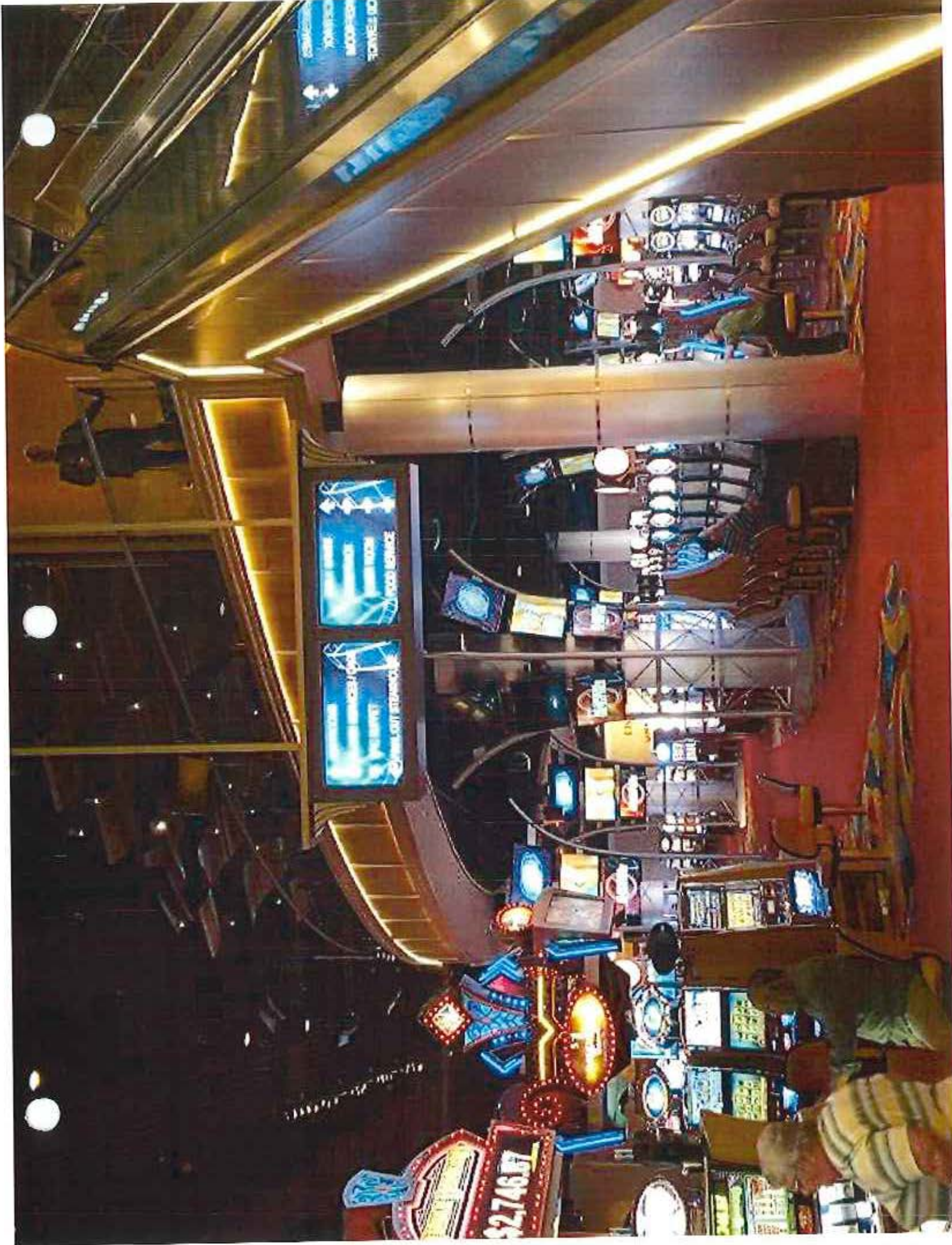
PARKING LEVEL E
PARKING LEVEL D

- PARKING LEVEL C
- PARKING LEVEL B
- PARKING LEVEL A

GAMING LEVELS

- 3: BOX SEATS,
BANQUETS
- 2: HOLLYWOOD
SKYBOX,
SIMULCAST,
MOUNTAINVIEW
DINING
- 1: CASINO,
TRACK LEVEL
- LL: ADMINISTRATION

Level 1:
 Basic Statistics
 Probability
 Level 2:
 Employment Statistics
 Health Statistics
 Environmental Statistics
 Level 3:
 Statistics
 Health Statistics



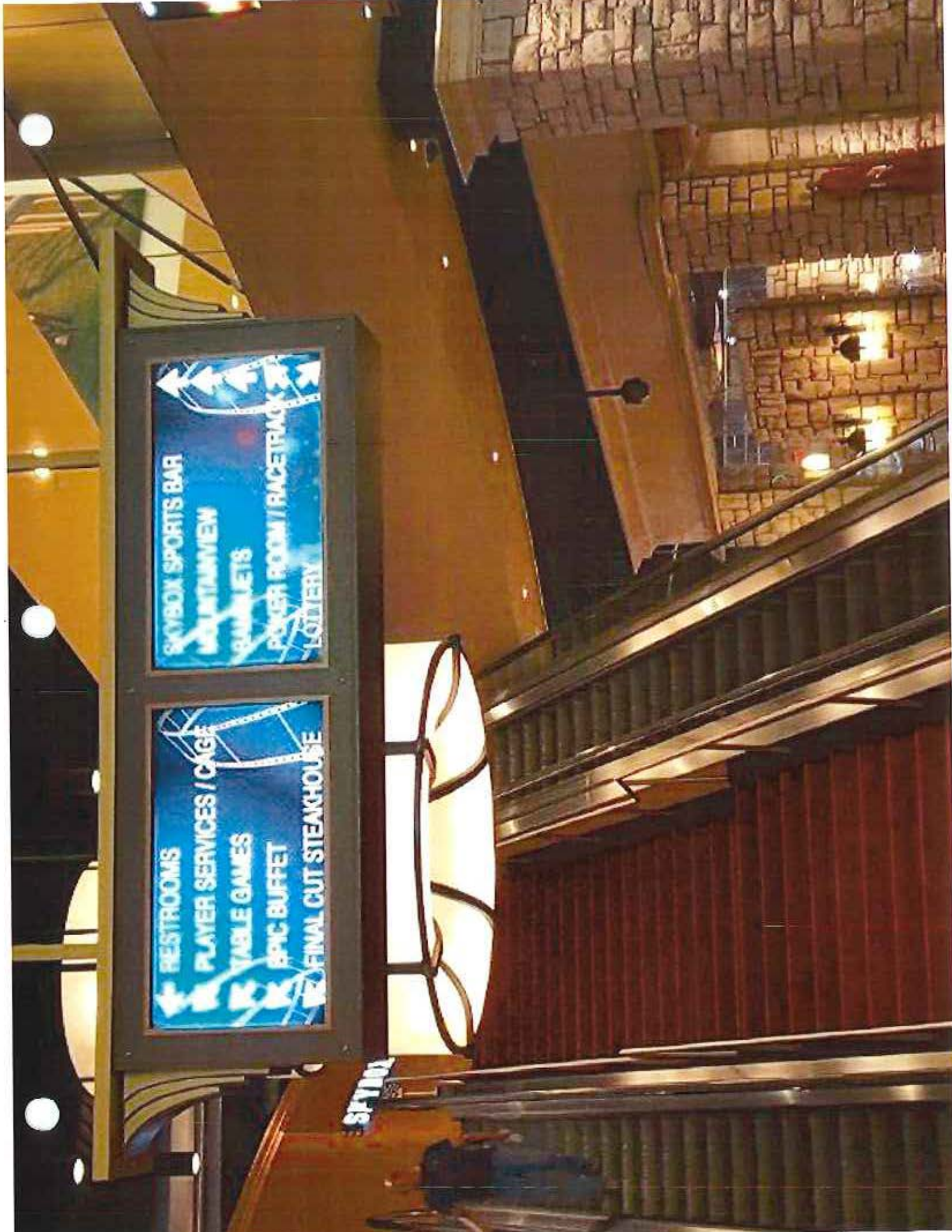
RESTROOMS
PLAYER SERVICES / CAGE
TABLE GAMES
EPIC BUFFET
FINAL CUT STEAKHOUSE

SKYBOX SPORTS BAR
MOUNTAINVIEW
BAMMETS
POKER ROOM / RACETRACK
LOTTERY

RESTROOMS
PLAYER SERVICES / CAGE
TABLE GAMES
EPIC BUFFET
FINAL CUT STEAKHOUSE

SKYBOX SPORTS BAR
MOUNTAINVIEW
BAMMETS
POKER ROOM / RACETRACK
LOTTERY

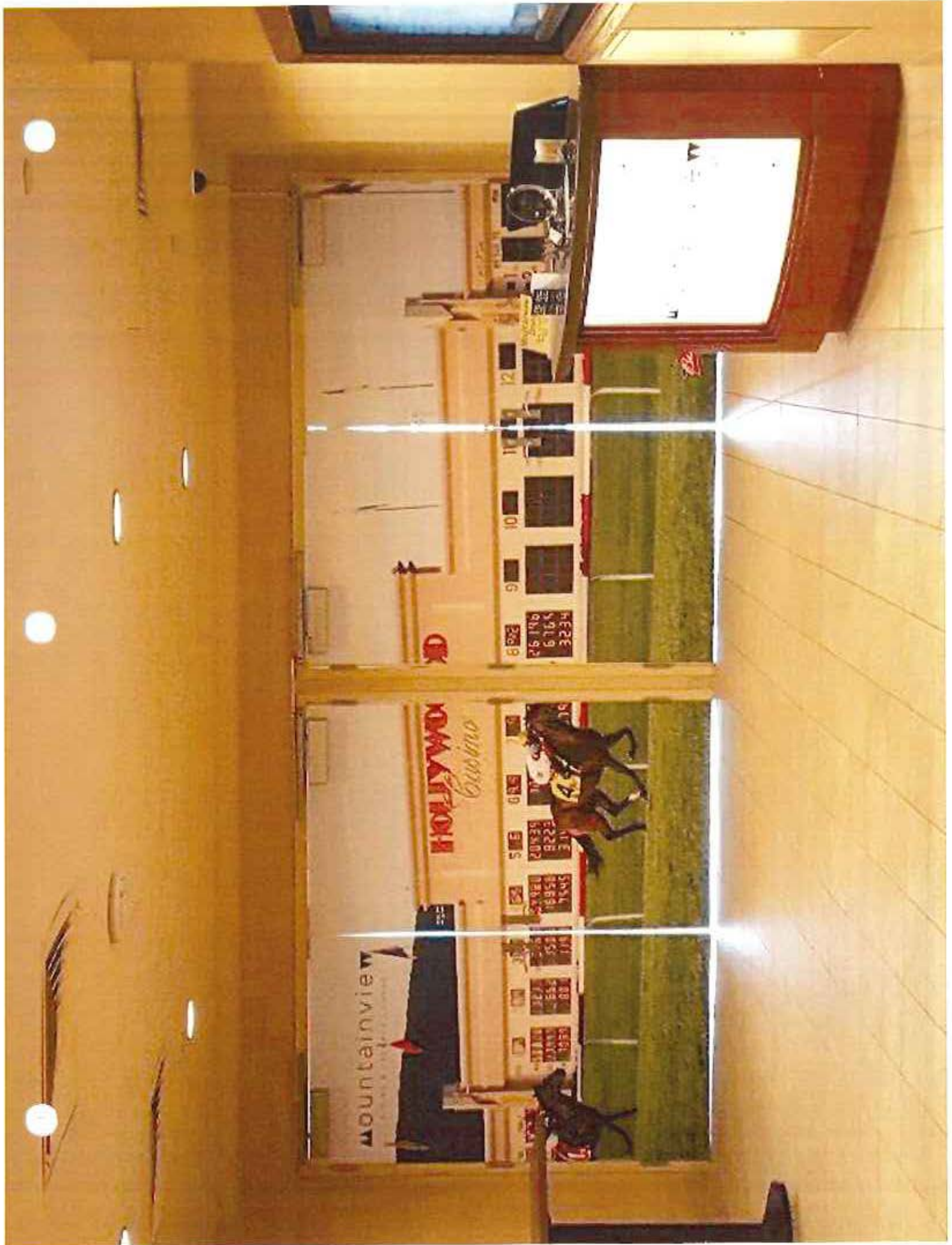
SKYBOX



mountainview

DINING & TERRACE LOUNGE





Mountainview

HOLLYWOOD Casino

POST	NO.	ORIG.	W.	PL.	TR.
1	10	10	10	10	10
2	11	11	11	11	11
3	12	12	12	12	12
4	13	13	13	13	13
5	14	14	14	14	14
6	15	15	15	15	15
7	16	16	16	16	16
8	17	17	17	17	17
9	18	18	18	18	18
10	19	19	19	19	19
11	20	20	20	20	20
12	21	21	21	21	21
13	22	22	22	22	22
14	23	23	23	23	23
15	24	24	24	24	24
16	25	25	25	25	25
17	26	26	26	26	26
18	27	27	27	27	27
19	28	28	28	28	28
20	29	29	29	29	29
21	30	30	30	30	30

W
+
W

▼ MOUNTAINVIEW ► MUTUELS
DINING ROOM ► GLOBAL CASH
▼ RESTROOMS ►





▼ CASINO
▼ MUTUELS
▼ GLOBAL CASH



◀ MULTIS ▶ CASINO
▶ GLOBAL CASH ▶ SIMULCAST
▶ PARKING GARAGE ▶ THE AIRE
▶ SKYBOX SPORTS
BAR

MUTUAL




MUTUALS



SIMULCAST THEATRE



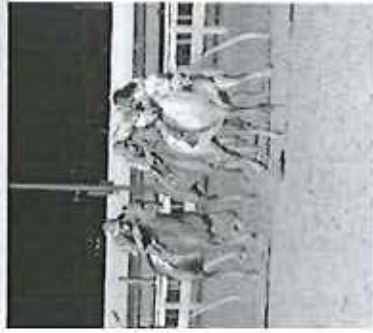
**WATCH LIVE RACING
FROM THE COMFORT
OF BOX SEATS**



Purchase a four seat Grandstand
or a four seat Grandstand
and enjoy the excitement of
watching the horses race

HOLIDAY RACING FESTIVAL

★ WEDNESDAY, NOVEMBER 23 ★



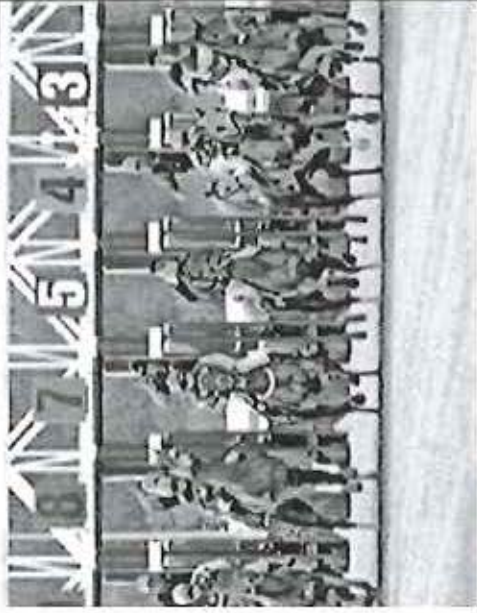
\$200,000 FABULOUS STRIKE STAKE
\$100,000 SWATARA STAKES
\$100,000 BLUE MOUNTAIN STAKE

Nominations Close
Wednesday, November 16, 2016

Gambling Problem? Call 1-877-565-2112 for help.

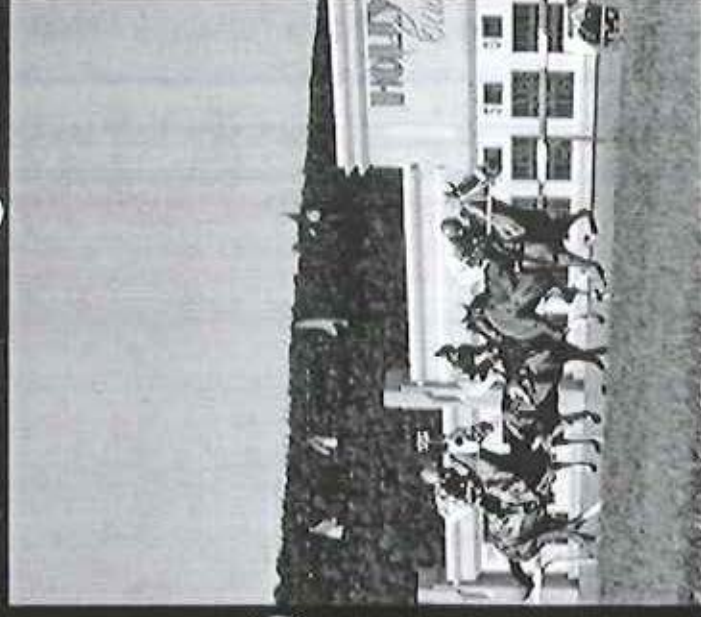


HOLLYWOOD
Casino
PENN NATIONAL RACE COURSE



HOLLYWOOD
Casino

— AT PENN NATIONAL RACE COURSE —



MAY 6 ★ MAY 20 ★ JUNE 10

TRIPLE CROWN SATURDAY

★ LIVE RACING ★

SPECIAL POST TIME - 1:30PM

Gambling Problem? Call 1-877-565-2112 for help.



\$500

SHOWVIVOR CONTEST

★ SATURDAY, MAY 6 ★

Registration Closes at Post Time of Penn National's First Race



FOLLOW US ON  facebook.com/HollywoodPenn  Twitter.com/HollywoodPenn

Gambling Problem? Call 1-877-565-2112 for help.



\$100

DERBY HAT PHOTO PROMOTIONAL DRAWING

★ SATURDAY, MAY 6 ★

Registration Closes at 5PM



FOLLOW US ON  facebook.com/HollywoodPenn  Twitter.com/HollywoodPenn

Gambling Problem? Call 1-877-565-2112 for help.



\$500

**PREAKNESS DAY
SHOWVIVOR CONTEST**

★ **SATURDAY, MAY 20** ★

Registration Closes at Post Time of Penn National's First Race

Gambling Problem? Call 1-877-565-2112 for help.

Saturday Morning Sunris

RDAY, JUNE 3 | SATURDAY, JULY 1 | SATURDAY, AUG
★ 9AM-11AM ★



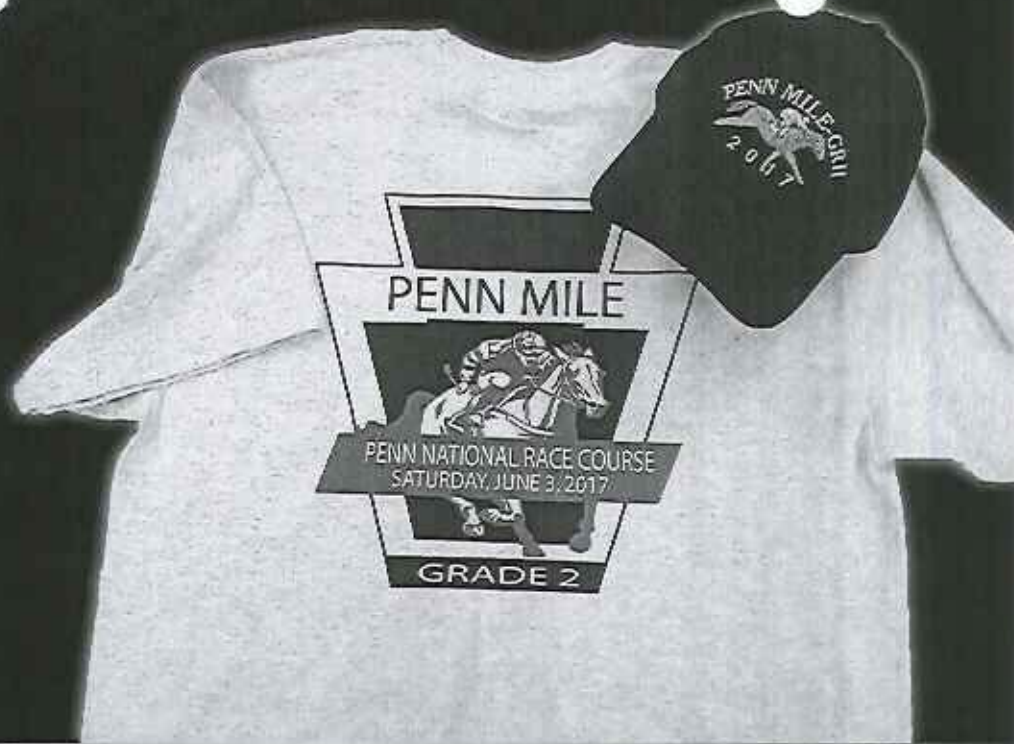
— WATCH —

THE HORSES TRAIN & MEET THE HORSEMEN

Gambling Problem? Call 1-877-565-2112 for help.

GET A FREE PENN MILE SHIRT OR HAT

(SUPPLIES LAST SOME RESTRICTIONS APPLY)



PENN MILE



**PENN NATIONAL RACE COURSE
SATURDAY, JUNE 3, 2017**

GRADE 2

★ SATURDAY, JUNE 3 ★

PENN MILE DAY

★ LIVE RACING ★

SPECIAL POST TIME - 3:45

Gambling Problem? Call 1-877-565-2112 for help.

HOLLYWOOD *Casino*

AT PENN NATIONAL RACE COURSE

FRIDAY, JUNE 9 ★ FIRST POST 6PM

Camels n' Ostriches n' Horses... Oh My!



TWO ZANY EXHIBITION RACES
featuring

OSTRICHES AND CAMELS!

On June 9 the ostriches & camels will entertain after the 3rd and 6th race on our Penn National live racing card.

DON'T MISS IT!

777 Hollywood Boulevard ★ Grantville, PA 17028 ★ (717) 469-2211 ★ HCPN.COM

HOLLYWOOD
RACES

New! HollywoodRaces.com
Web • Mobile • Phone
800-822-2004



PENN NATIONAL - June 3, 2017 - Race 9

STAKES Penn Mile S. Grade 2 - Thoroughbred
FOR THREE-YEAR-OLDS.

One Mile On The Turf Track Record: (Thunder Brew - 1:33.12 - July 31, 2010)

Purse: \$500,000 Guaranteed

Guaranteed Money: \$500,000

Payoff of Race: \$500,000 1st \$278,000, 2nd \$96,000, 3rd \$55,050, 4th \$32,300, 5th \$18,650, 6th \$5,000, 7th \$5,000, 8th \$5,000, 9th \$5,000

EQUIBASE



Video Race Replay

Weather: Clear Track: Firm

Off at: 7:54 Start: Good for all

Last Raced	Pgm	Horse Name (Jockey)	Wgt	M/E	PP	Start	1/4	1/2	3/4	Str	Fin	Odds	Comments
22Apr17 ³ AQU ²	8	Frostmourne (Ortiz, Jr., Irad)	122	L	9	1	5 ^{1/2}	5 ¹ lead	5 ¹	3 ¹	1 ^{1/4}	3.20	rate 3w, cler 1/16, drg
6May17 ⁹ CD ³	7	Big Score (Castollano, Javier)	122	L	7	7	7 ^{1/2}	7 ^{1/2}	7 ^{1/2}	6 ^{1/2}	2 ^{1/2}	1.80*	swung 3wide, gamely
13May17 ⁴ SA ²	4	Cistron (Lopez, Paco)	118	L	3	3	2 ^{1/2}	2 ^{1/2}	2 ¹	1 ^{Head}	3 ¹	5.40	pressed 2w, no match
20May17 ⁸ PIM ³	5	Mo Maverick (Lynch, Feargal)	117	L	4	5	3 ¹	3 ^{1/2}	3 ^{1/2}	5 ^{1/2}	4 ^{Nose}	9.60	bld 3w, weakened
6May17 ⁹ CD ⁸	6	Holiday Stone (Saez, Luis)	116	L	5	6	6 ²	6 ¹	6 ^{1/2}	4 ^{1/2}	5 ¹ lead	11.40	2w, bimp 1/16, even late
6May17 ¹⁰ GP ¹	2	Bronson (Gaffalione, Tyler)	122	L	b	4	4 ^{1/2}	4 ¹	4 ¹	7 ²	6 ¹	12.90	ang btwn 1/16, ovonly
20May17 ¹¹ PIM ²	3	Time to Travel (Prado, Edgar)	117	L	2	2	1 ^{1/2}	1 ^{1/2}	1 ^{Head}	2 ¹ Head	7 ^{1/2}	4.30	pace rail, drifted 1/16
6May17 ⁸ PRX ¹	1A	Bonus Points (Bisono, John)	118	L	6	8	8 ^{1/2}	8	8 ^{Head}	8 ⁵	8 ⁸	35.00	rail, no factor
2Apr17 ⁸ TAM ³	1X	Prize Fight (Carmouche, Kendrick)	118	L	b	8	9	9	9	9	9	35.00	tired outside

Fractional Times: 23.00 47.53 1:12.13 1:22.90

Final Time: 1:35.04

Split Times: (24:53) (24:60) (10:77) (12:14)

Run-Up: 48 feet

Winner: Frostmourne, Dark Bay or Brown Colt, by Speightstown out of Leaning Tower, by Theatrical (IRE). Foaled Apr 22, 2014 in Kentucky.

Breeder: Green Lantern Stables, LLC. Winning Owner: Green Lantern Stables LLC

Scratched Horse(s): Shiraz (Trainer)

Total WPS Pool: \$337,128

Pgm	Horse	Wn	Place	Show	Wager Type	Winning Numbers	Payoff	Pool
8	Frostmourne	8.40	4.00	3.20	\$0.50 Pick 3	1/2/0-1/2/4-8 (3 correct)	7.85	73,668
7	Big Score		2.80	2.20	\$0.50 Pick 4	2-1/2/6-1/2/4-8 (4 correct)	67.55	251,979
4	Cistron			3.20	\$2.00 Pick 6 Jackpot	3/5/6-1-2-1/2/6-1/2/4-8 (6 correct)	3,271.00	16,832
					\$1.00 Exacta	8-7	11.50	179,845
					\$0.10 Superfecta	8-7-4-5	23.49	54,969
					\$0.50 Trifecta	8-7-4	20.80	97,595

Past Performance Running Line Preview

Pgm	Horse Name	Start	1/4	1/2	3/4	Str	Fin
8	Frostmourne	1	5 ^{3/2}	5 ^{3/2}	5 ^{2/2}	3 ^{Head}	1 ^{1/4}
7	Big Score	7	7 ⁶	7 ^{4/2}	7 ⁴	6 ^{2/4}	2 ^{1/4}
4	Cistron	3	2 ^{1/2}	2 ^{1/2}	2 ^{Head}	1 ^{Head}	3 ^{2/3/4}
5	Mo Maverick	5	3 ²	3 ²	3 ¹	5 ^{1/3/4}	4 ^{3/3/4}
6	Holiday Stone	6	6 ¹	6 ^{3/2}	6 ^{3/2}	4 ^{1/4}	5 ^{3/4}
2	Bronson	4	4 ³	4 ^{2/2}	4 ^{1/2}	7 ^{3/4}	6 ⁴
3	Time to Travel	2	1 ^{1/2}	1 ^{1/2}	1 ^{Head}	2 ^{Head}	7 ⁵
1A	Bonus Points	8	8 ^{5/2}	9 ^{5/4}	8 ^{5/2}	8 ^{5/4}	8 ^{5/2}
1X	Prize Fight	9	9 ⁷	8 ⁵	9 ^{5/3/4}	9 ^{10/3/4}	9 ^{13/2}

Trainers: 8 - Clement, Christophe; 7 - Yakteen, Tim; 4 - Sadler, John; 5 - Weaver, George; 6 - Weaver, George; 2 - Pletcher, Todd; 3 - Matz, Michael; 1A - Pletcher, Todd; 1X - Maker, Michael

Owners: 8 - Green Lantern Stables LLC; 7 - George Krikorian; 4 - Hronis Racing LLC and Little Red Feather Racing; 5 - R. A. Hill Stable and Gatsas Stables; 6 - Hill, Jim and Susan; 2 - Mathis Stable LLC; 3 - Garland Williamson; 1a- Three Diamonds Farm; 1x- Three Diamonds Farm;

Footnotes

FROSTMOURNE broke sharply then was taken well in hand, bided his time three wide, swung four wide into the stretch while moving, responded to urging and quickly ran clear into the final sixteenth. BIG SCORE was unhurried between horses, raced two wide into the final turn, swung three wide into the stretch and finished gamely outside. CISTRON pressed two wide outside the early leader while in hand, took over in early stretch but was little match through the final sixteenth. MO MAVERICK raced in good position outside, gave his best three wide into the stretch then weakened. HOLIDAY STONE was unhurried, raced two wide between horses around the final turn, bumped with TIME TO TRAVEL while trying to rally between horses into the final sixteenth then continued evenly. BRONSON wasn't far back inside to the stretch, swung out between horses to avoid tight quarters entering the final sixteenth but couldn't gain. TIME TO TRAVEL made the early pace along the rail then drifted while weakening in midstretch, bumped with HOLIDAY STONE and faded. BONUS POINTS stayed inside and failed to menace. PRIZE FIGHT was outrun outside.

Donotes a Koenigsdorff Sales Graduate



Eric Johnston

@BigEHouston

Director of Racing Operations Hollywood Casino at Penn National Race Course

Grantville Pa

HCPN.com

Joined March 2009

67 Photos and videos




Tweets	Following	Followers	Likes	Moments
981	119	207	19	0

Edit profile

Tweets Tweets & replies Media


- You Retweeted

 **Hollywood Casino** @HollywoodPenn · Jun 22

Attention Marquee Members! Receive \$5 OFF at Epic Buffet this Sunday, June 24th from 11am - 8pm!

Gambling... fb.me/4Hu7xp1ty


1
- You Retweeted

 **Hollywood Casino** @HollywoodPenn · Jun 17

Eagles Tribute band 7 Bridges, performing live tonight at 8:00pm!

Gambling Problem? Call 1.800. Gambler for help. fb.me/BGZYPqkK


1
- You Retweeted

 **Hollywood Casino** @HollywoodPenn · Jun 16


Enjoy live music tonight at 9pm by Into the Spin!

Gambling Problem? Call 1.800.Gambler for help. fb.me/8VccQU90o

2 1
- You Retweeted

 **Hollywood Casino** @HollywoodPenn · Jun 9

Don't miss your chance to be one of our lucky \$250 winners of \$100 in Free Slot Play this Saturday from Noon - ... fb.me/7S9Zi75so

1
-  **Eric Johnston** @BigEHouston · Jun 9

Camel & Ostrich Races tonight @HollywoodPenn Don't miss the fun!
@PA_HBPA @PA_PHBA





🗨️ 1 3 ||

🔄 You Retweeted



Penelope P. Miller @PenelopePMiller · Jun 4

I'm excited to share my photo diary from @HollywoodPenn @PNGRacing for yesterday's #PennMile day! americasbesttracing.net/lifestyle/2017... cc: @PA_HBPA

🏠 Home

⚡ Moments

🔔 Notifications

✉ Messages



🔍 Search Twitter



🗨️ Tweet

Penn Mile Diaries: Pennsylvania's Hidden Gem

I love visiting new tracks for the first time: it's an adventure, and I adore finding a new place to explore and mark off my checklist.

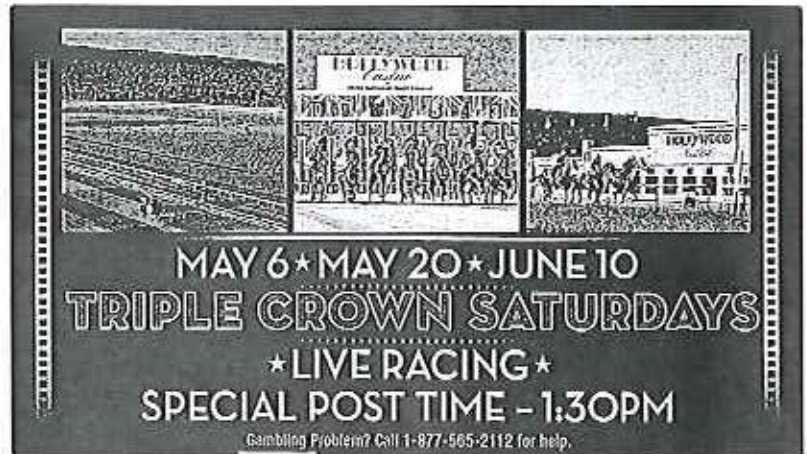
americasbesttracing.net

🗨️ 6 15 ✉



Eric Johnston @BigEHouston · Jun 8

Showviror returns Saturday @HollywoodPenn!!! 1st live race @ 1:30! Live music @ 5:30!!! @PA_HBPA @PA_PHBA Always FREE admission&parking!!



🗨️ 2 2 ||



Eric Johnston @BigEHouston · Jun 8

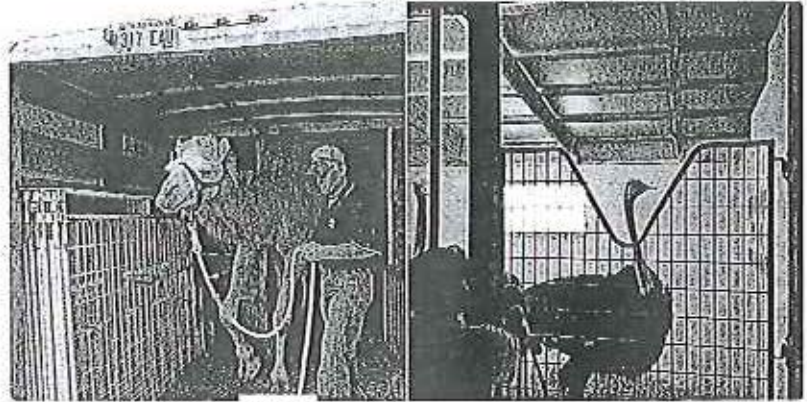
A beautiful evening for racing @HollywoodPenn 1st race @ 6pm! Always FREE admission&parking!!! @PA_HBPA @PA_PHBA

🗨️ 1 1 ||



Eric Johnston @BigEHouston · Jun 7

They're here! Check'em out tomorrow nite on the track side apron @HollywoodPenn & come back Fri to watch the races!!! @PA_HBPA @PA_PHBA



🗨️ 2 2 📌



Eric Johnston @BigEHouston · Jun 7

Wednesday Night Racing returns to @HollywoodPenn tonight @ 6pm. Should be fast & yielding!!! @PA_HBPA @PA_PHBA @HollywoodRaces @PNGRacing

🗨️ 3 2 📌

🔄 You Retweeted



Hollywood Casino @HollywoodPenn · Jun 6

Like & Share for your chance to win 2 FREE tickets to our 12 Chefs + 1 Steer Event! June 12th at 6:30pm featuring... fb.me/4QF4fdnK0

🗨️ 7 7 📧



Eric Johnston @BigEHouston · Jun 6

Don't forget Special Live Post Time, Belmont Day @HollywoodPenn 1:30 pm! @PA_HBPA



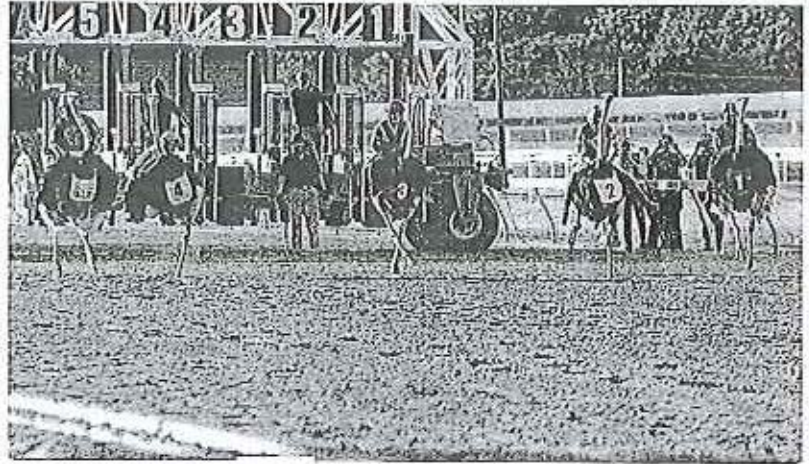
🗨️ 5 4 📌



Eric Johnston @BigEHouston · Jun 6

They're BAAACK!!! 3 days til Ostrich&Camel races, Fri 6/9 @HollywoodPenn after the 3rd&6th races!!! @PA_HBPA @PA_PHBA @JackKorpela





🗨️ 2 3 ||

🔄 You Retweeted



Hollywood Casino @HollywoodPenn · Jun 5

Penny Power Wednesdays are back! You could be one of our 220 winners selected EVERY Wednesday through June for... fb.me/GmOg2rDy

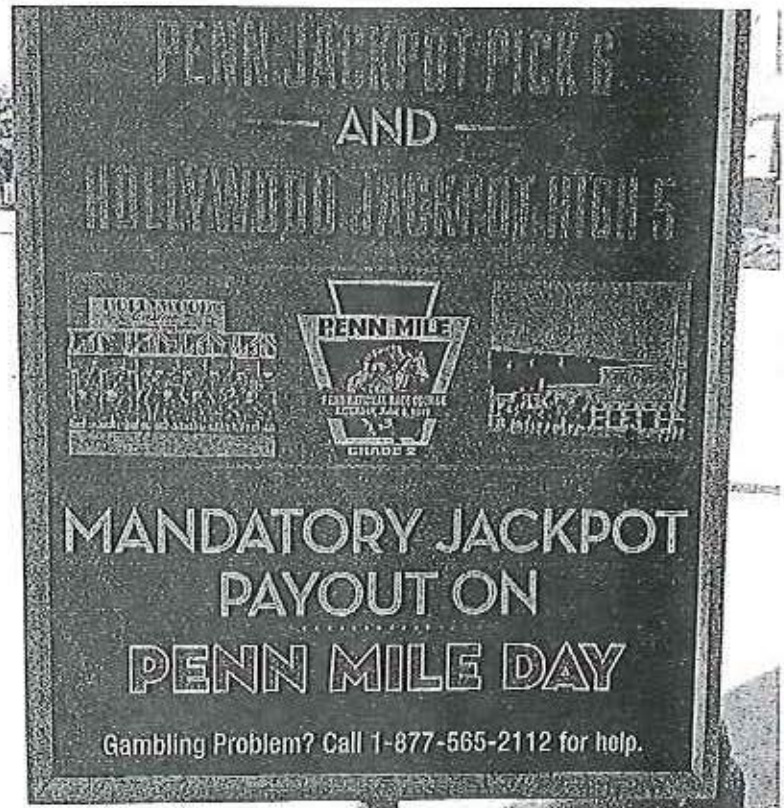
🗨️ 1 ✉️

🔄 You Retweeted



Bryan Langlois, DVM @Animalsheltrdoc · Jun 3

Just another reason to be here this afternoon! @ABRLive @EQconvention @PAagriculture @PA_IIBPA @ThoroFan @PA_PHBA @BigEHouston @theTDN



🗨️ 3 1 ✉️

🔄 You Retweeted



Bryan Langlois, DVM @Animalsheltrdoc · Jun 3

Free breakfast...great food...great views...great people...all that is missing is YOU. Come on out!!! @EQconvention @ABRLive @PA_HBPA -- at Hollywood Casino at Penn National Race Course

Eric Johnston (@BigEHouston) | Twitter

1 3 1

You Retweeted



HRRN @HRRN · Jun 3

Thanks for joining us, we're back tonight at 6 ET for coverage of #PennMile live from @HollywoodPenn exclusively at horseracingradio.net

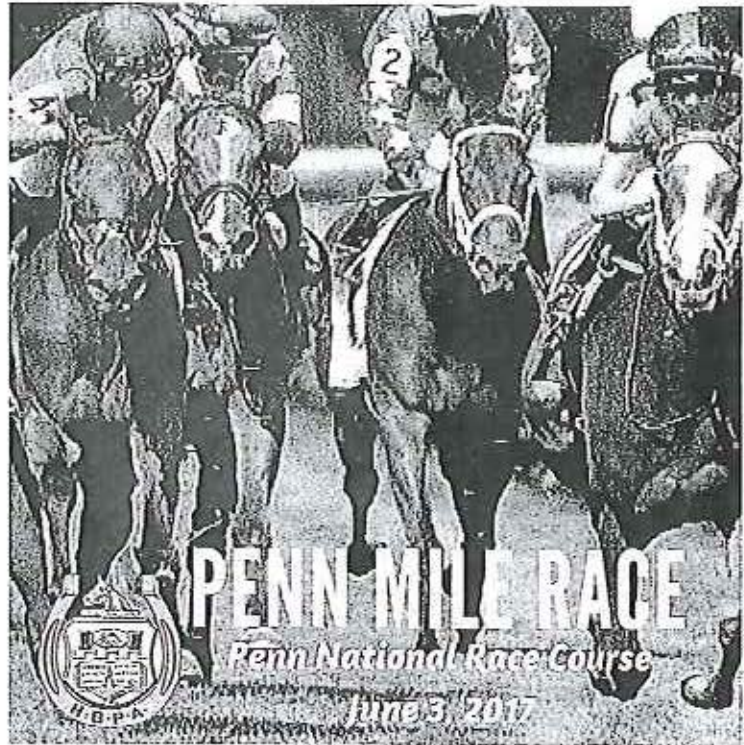
4 2

You Retweeted



Pa HBPA @PA_HBPA · Jun 3

The #PennMileRace kicks off today at 3:45 p.m. Come out to Penn National Race Course for a fun-filled day of racing! #PAHorseRacing



3 3

You Retweeted



PNG Racing Hub @PNGRacing · Jun 3

Happy Penn Mile Day! #PennMile



\$500,000 Penn Mile (G2)

Saturday, June 3

First Post 3:45 PM ET

All Stakes Pick 4 Races 6-9

Approx. Post For Penn Mile @ 7:45 PM ET

2 4

You Retweeted



HRRN @HRRN · Jun 3

Bowman on who she likes in the Penn Mile: I don't know, I can't pick one. There's so many nice horses, it's wide open.

	Live Handle Grantville	OTW's	Call Center	Total
2009	\$7,736,356	\$4,409,392	\$2,173,613	\$14,319,361
2010	\$7,145,869	\$3,605,876	\$1,814,229	\$12,565,974
2011	\$6,375,879	\$2,721,851	\$1,911,496	\$11,009,226
2012	\$6,780,629	\$2,954,433	\$1,598,257	\$11,333,319
2013	\$6,539,407	\$2,492,633	\$1,721,744	\$10,753,784
2014	\$5,503,717	\$1,835,294	\$3,404,729	\$10,743,740
2015	\$5,112,978	\$2,858,776	\$2,521,837	\$10,493,591
2016	\$4,757,741	\$1,146,687	\$1,733,350	\$7,637,778

	In and Out of State Handle			Total
	Grantville	OTW's	Call Center	
2009 In	\$1,954,173	\$5,834,587	\$899,045	
Out	\$23,115,318	\$67,845,104	\$9,808,026	
Total	\$25,069,491	\$73,679,691	\$10,707,071	\$109,456,253
2010 In	\$1,812,122	\$5,381,939	\$1,570,107	
Out	\$20,071,611	\$57,054,198	\$24,164,982	
Total	\$21,883,733	\$62,436,137	\$25,735,089	\$110,054,959
2011 In	\$1,397,192	\$4,765,206	\$1,071,957	
Out	\$17,808,809	\$54,936,553	\$20,923,951	
Total	\$19,206,001	\$59,701,759	\$21,995,908	\$100,903,668
2012 In	\$1,497,705	\$4,416,686	\$1,130,145	
Out	\$16,977,117	\$46,586,401	\$19,658,193	
Total	\$18,474,822	\$51,003,087	\$20,788,338	\$90,266,247
2013 In	\$1,314,549	\$3,636,183	\$1,102,260	
Out	\$15,846,333	\$38,774,549	\$17,050,477	
Total	\$17,160,882	\$42,410,732	\$18,152,737	\$77,724,351
2014 In	\$1,043,657	\$2,877,871	\$1,633,089	
Out	\$14,008,960	\$29,242,126	\$13,793,200	
Total	\$15,052,617	\$32,119,997	\$15,426,289	\$62,598,903
2015 In	\$1,076,082	\$1,748,803	\$1,102,837	
Out	\$13,765,622	\$17,194,874	\$12,012,961	
Total	\$14,841,704	\$18,943,677	\$13,115,798	\$46,901,179
2016 In	\$981,601	\$1,674,157	\$1,017,415	
Out	\$13,901,860	\$21,840,597	\$14,233,450	
Total	\$14,883,460	\$23,514,754	\$15,250,866	\$53,649,080

Penn National	On-site Handle Grantville	OTW's	Call Center	Total
2009	\$32,805,846	\$78,089,082	\$12,880,684	\$123,775,612
2010	\$29,029,602	\$66,042,013	\$27,549,318	\$122,620,933
2011	\$25,581,880	\$62,423,610	\$23,907,404	\$111,912,894
2012	\$25,255,451	\$53,957,519	\$22,386,596	\$101,599,566
2013	\$23,700,289	\$44,903,365	\$19,874,480	\$88,478,134
2014	\$20,556,334	\$33,955,290	\$18,831,019	\$73,342,643
2015	\$19,954,683	\$21,802,452	\$15,637,634	\$57,394,769
2016	\$19,641,201	\$24,661,441	\$16,984,216	\$61,286,857

Export Handle by Month

	2016	2015	
January	\$13,786,860	\$12,701,619	7.87%
February	\$9,950,333	\$10,375,324	-4.27%
March	\$16,891,580	\$9,866,251	41.59%
April	\$13,369,205	\$16,729,175	-25.13%
May	\$9,703,870	\$15,337,091	-58.05%
June	\$13,072,266	\$13,338,481	-2.04%
July	\$11,660,430	\$16,295,525	-39.75%
August	\$10,689,486	\$12,480,604	-16.76%
September	\$10,500,237	\$13,104,517	-24.80%
October	\$10,842,819	\$13,498,889	-24.50%
November	\$12,940,447	\$14,698,346	-13.58%
December	\$15,167,446	\$12,323,626	18.75%
	\$148,574,978	\$160,749,449	-8.19%

PA Bred Information

	<u>Total</u>	<u>PA Bred</u>	<u>Individual</u>	<u>% PA Bred</u>	<u>Total</u>	<u>PA Bred</u>	<u>% PA Bred</u>	<u>Total</u>	<u>PA Bred</u>	<u>% PA Bred</u>	<u>PA Bred</u>	<u>Total</u>	<u>% PA Bred</u>
	<u>Starters</u>	<u>Starters</u>	<u>PA-Bred Starters</u>	<u>Starters</u>	<u>Races</u>	<u>Winners</u>	<u>Winners</u>	<u>Purses</u>	<u>Earnings</u>	<u>Earnings</u>	<u>Closed Races</u>	<u>Races</u>	<u>Closed Races</u>
2007	12588	3539	1414	28.11%	1569	433	27.60%	\$13,573,900	\$5,055,678	37.25%	34	1569	2.17%
2008	13330	3851	1853	28.89%	1573	401	25.49%	\$22,238,800	\$7,802,877	35.09%	75	1573	4.77%
2009	17017	4686	2253	27.54%	1858	422	22.71%	\$35,854,200	\$10,196,016	28.44%	54	1858	2.91%
2010	15114	4613	2443	30.52%	1771	460	25.97%	\$36,589,570	\$11,111,178	30.37%	174	1771	9.82%
2011	14029	4650	1195	33.15%	1773	549	32.66%	\$34,620,000	\$12,800,340	36.97%	236	1773	13.31%
2012	14215	5913	1375	41.60%	1767	666	37.69%	\$38,493,000	\$17,079,826	44.37%	271	1767	15.34%
2013	13461	6107	1379	45.37%	1769	724	40.93%	\$33,838,000	\$15,822,488	46.76%	287	1769	16.22%
2014	12010	5868	1312	48.86%	1668	766	45.92%	\$31,014,300	\$17,254,066	55.63%	284	1668	17.02%
2015	11131	5323	1228	47.82%	1485	618	41.61%	\$28,372,850	\$14,614,821	51.50%	181	1485	12.18%
2016	11444	5118	1181	44.72%	1524	603	39.57%	\$29,225,950	\$14,454,483	49.46%	200	1524	13.12%

**figures provided by PA Horse Breeders Association*

Race Summary Report

From 01/01/2016 to 12/31/2016

Breed: TB Course: Both Sex: Both

State Brod: Included Sorted By: Race Type

Ann National

Page 1 of 3

Race Type	Race Class	Races	Horses	Purses	Percent Total	Long Races	Avg Long	Short Races	Avg Short	Overall Avg
ALLOWANCE										
	ALW1/W1/XMC	84	659	2,537,000	5.51	44	8.07	40	7.60	7.85
	ALW1/W1/XMC(PA)	68	482	2,264,400	4.46	34	6.88	34	7.29	7.09
	ALW2	2	14	59,000	0.13	0	0.00	2	7.00	7.00
	ALW2(PA)	1	7	33,300	0.07	0	0.00	1	7.00	7.00
	COND	1	7	33,300	0.07	0	0.00	1	7.00	7.00
	All ALW Classes	156	1169	4,927,000	10.24	78	7.55	78	7.43	7.50
ALLOWANCE OPTIONAL CLAIMING										
	ALW2/W2/XMCorC25000	64	449	1,945,600	4.20	33	6.91	31	7.13	7.02
	ALW3/W3/XMCorC32000	1	6	31,400	0.07	0	0.00	1	6.00	6.00
	All AOC Classes	65	455	1,977,000	4.27	33	6.91	32	7.09	7.00
BEATEN CLAIMING										
	C15000-13000NW1(DATE)	7	53	133,000	0.46	3	6.67	4	8.25	7.57
	C4000NW1(DATE)	40	341	420,000	2.62	16	8.81	24	8.33	8.53
	C4000NW2(DATE)	22	179	250,800	1.44	10	8.00	12	8.25	8.14
	C5000NW1(DATE)	6	39	74,400	0.39	2	6.00	4	6.75	6.50
	C5000NW1(DATE)orNW4	9	81	111,600	0.59	5	9.40	4	8.50	9.00
	C5000NW2(DATE)	1	8	13,300	0.07	0	0.00	1	8.00	8.00
	C5000NW2(DATE)orNW4	15	135	199,500	0.98	8	8.63	7	9.43	9.00
	C8000-7000NW1(DATE)	8	58	114,400	0.52	2	7.50	6	6.83	7.00
	All BCL Classes	108	892	1,317,000	7.07	46	8.35	62	8.19	8.26
CLAIMING										
	C10000-9000	7	45	140,000	0.46	2	7.00	5	6.20	6.43
	C10000-9000NW2	3	20	45,600	0.20	1	6.00	2	7.00	6.67
	C12500-10500	17	124	355,300	1.12	11	7.09	6	7.67	7.29
	C12500-10500NW2	18	113	307,800	1.18	6	6.33	12	6.25	6.28
	C12500-10500NW3	13	78	222,300	0.85	3	6.33	10	5.90	6.00
	C12500-10500NW4	10	63	180,000	0.66	5	6.00	5	6.60	6.30
	C15000-13000	3	20	65,700	0.20	1	7.00	2	6.50	6.67
	C15000-13000NW1(DATE)	28	199	532,000	1.84	12	7.33	16	6.94	7.11
	C15000-13000NW2(DATE)	4	24	83,600	0.26	0	0.00	4	6.00	6.00
	C15000-13000NW2(PA)	6	43	125,400	0.39	5	7.20	1	7.00	7.17
	C16000-14000	3	23	76,650	0.20	1	8.00	2	7.50	7.67
	C16000-14000NW2	10	79	190,000	0.66	4	9.25	6	7.00	7.90
	C16000-14000NW3	15	109	300,000	0.98	5	8.40	10	6.70	7.27
	C18000-16000	2	11	43,800	0.13	1	5.00	1	6.00	5.50
	C18000-16000NW2	3	18	60,000	0.20	0	0.00	3	6.00	6.00
	C20000-18000	1	6	23,000	0.07	0	0.00	1	6.00	6.00
	C20000-18000NW2	1	7	20,000	0.07	0	0.00	1	7.00	7.00
	C25000-22500NW2	14	87	280,000	0.92	6	6.00	8	6.38	6.21
	C25000-22500NW3	1	6	20,900	0.07	0	0.00	1	6.00	6.00
	C4000	12	80	171,600	0.79	5	6.60	7	6.71	6.67
	C4000NW1(DATE)	73	614	766,500	4.79	34	7.85	39	8.90	8.41
	C4000NW2(DATE)	50	394	570,000	3.28	23	7.96	27	7.81	7.88
	C5000	19	133	288,800	1.25	12	7.33	7	6.43	7.00
	C5000NW1(DATE)	15	94	186,000	0.98	7	5.71	8	6.75	6.27
	C5000NW2	51	401	581,400	3.35	20	7.20	31	8.29	7.86
	C5000NW2(PA)	4	22	52,000	0.26	2	5.50	2	5.50	5.50
	C5000NW3	49	392	607,600	3.22	19	7.95	30	8.03	8.00
	C5000NW3(PA)	1	5	13,000	0.07	0	0.00	1	5.00	5.00
	C6250-6000	20	142	356,400	1.31	9	7.00	11	7.18	7.10
	C6250-6000NW1(DATE)	10	74	138,000	0.66	5	7.00	5	7.60	7.40
	C6250-6000NW2	1	8	12,400	0.07	1	8.00	0	0.00	8.00
	C6250-6000NW2(DATE)	12	73	165,600	0.79	8	6.00	4	6.25	6.08
	C6250-6000NW4	46	374	680,800	3.02	21	8.05	25	8.20	8.13
	C7500NW2	27	190	359,100	1.77	8	7.13	19	7.00	7.04
	C7500NW2(PA)	2	12	32,400	0.13	0	0.00	2	6.00	6.00
	C7500NW3	24	163	343,200	1.57	11	6.73	13	6.85	6.79

Race Summary Report

From 01/01/2016 to 12/31/2016

Breed: TB Course: Both Sex: Both

State Bred: Included Sorted By: Race Type

enn National

Page 2 of 3

Race Type	Race Class	Races	Horses	Purses	Percent Total	Long Races	Avg Long	Short Races	Avg Short	Overall Avg
	C8000-7000	17	123	323,000	1.12	8	7.00	9	7.44	7.24
	C8000-7000NW1(DATE)	27	215	386,100	1.77	11	8.91	16	7.31	7.96
	C8000-7000NW2(DATE)	6	49	85,800	0.39	4	8.75	2	7.00	8.17
	All CLM Classes	625	4633	9,191,750	41.05	271	7.39	354	7.43	7.41
HANDICAP										
	HCP	2	16	400,000	0.13	1	5.00	1	11.00	8.00
	All HCP Classes	2	16	400,000	.13	1	5.00	1	11.00	8.00
LIFETIME CLAIMING										
	C10000-9000NW2	10	83	152,000	0.66	4	8.50	6	8.17	8.30
	C10000-9000NW2(PA)	1	6	18,500	0.07	0	0.00	1	6.00	6.00
	C10000-9000NW3	8	64	129,600	0.52	4	7.00	4	9.00	8.00
	C12500-10500NW2	6	38	102,600	0.39	3	6.33	3	6.33	6.33
	C12500-10500NW3	9	59	153,900	0.59	4	6.75	5	6.40	6.56
	C12500-10500NW4	3	17	54,000	0.20	3	5.67	0	0.00	5.67
	C15000-13000NW2	4	30	76,000	0.26	3	7.00	1	9.00	7.50
	C15000-13000NW2(PA)	3	21	62,700	0.20	2	7.00	1	7.00	7.00
	C15000-13000NW3	6	42	120,000	0.39	2	6.00	4	7.50	7.00
	C15000-13000NW3(PA)	1	7	20,900	0.07	0	0.00	1	7.00	7.00
	C16000-14000NW2	8	59	152,000	0.52	6	7.33	2	7.50	7.38
	C20000-16000NW2	1	8	20,000	0.07	1	8.00	0	0.00	8.00
	C25000-22500NW2	1	6	20,000	0.07	0	0.00	1	6.00	6.00
	C25000-22500NW3	1	5	20,900	0.07	0	0.00	1	5.00	5.00
	C25000NW2	1	6	20,000	0.07	0	0.00	1	6.00	6.00
	C5000NW2	44	357	501,600	2.69	15	8.80	29	7.76	8.11
	C5000NW3	37	321	457,800	2.43	15	8.93	22	8.50	8.68
	C6250-6000NW4	17	128	251,600	1.12	6	7.83	11	7.36	7.53
	C7500NW2	9	64	119,700	0.59	2	6.00	7	7.43	7.11
	C7500NW2(PA)	1	7	16,200	0.07	0	0.00	1	7.00	7.00
	C7500NW3	10	62	143,000	0.66	7	6.00	3	6.67	6.20
	C7500NW3(PA)	1	6	16,200	0.07	0	0.00	1	6.00	6.00
	All LCL Classes	182	1396	2,629,200	11.98	77	7.67	105	7.67	7.67
MAIDEN CLAIMING										
	M10000-9000	13	111	185,900	0.85	5	7.60	8	9.13	8.54
	M12500-10500	14	100	226,800	0.92	5	7.80	9	6.78	7.14
	M15000-13000	16	131	273,600	1.05	5	8.20	11	8.18	8.19
	M15000-13000(PA)	22	174	459,800	1.44	10	8.70	12	7.25	7.91
	M16000-14000	14	101	239,400	0.92	8	7.88	6	6.33	7.21
	M18000-16000	3	23	54,300	0.20	0	0.00	3	7.67	7.67
	M20000-16000	8	57	144,800	0.52	7	7.14	1	7.00	7.13
	M25000-22500	14	99	266,000	0.92	6	7.67	8	6.63	7.07
	M5000	65	509	682,500	4.27	22	7.59	43	7.95	7.83
	M5000(PA)	10	85	130,000	0.66	3	8.00	7	8.71	8.50
	M7500	41	286	508,400	2.69	15	7.20	26	6.85	6.98
	M7500(PA)	7	53	113,400	0.46	2	7.50	5	7.60	7.57
	M8000	6	40	74,700	0.39	1	7.00	5	6.00	6.67
	M8000(PA)	3	19	48,900	0.20	1	5.00	2	7.00	6.33
	All MCL Classes	236	1788	3,408,500	15.49	90	7.67	146	7.52	7.58
MAIDEN										
	M	36	259	1,054,500	2.36	11	6.64	25	7.44	7.19
	M(PA)	64	486	2,131,200	4.20	16	7.22	46	7.74	7.59
	All MDN Classes	100	745	3,185,700	6.56	29	7.00	71	7.63	7.45
MAKES										
	STK	8	65	1,350,000	0.52	4	7.75	4	8.50	8.13
	STK(PA)	1	12	100,000	0.07	1	12.00	0	0.00	12.00
	All STK Classes	9	77	1,450,000	.59	5	8.60	4	8.50	8.56

Race Summary Report

From 01/01/2016 to 12/31/2016

Breed: TB Course: Both Sex: Both

Ann National

State Bred: Included Sorted By: Race Type

Page 3 of 3

Race Type	Race Class	Races	Horses	Purses	Percent Total	Long Races	Avg Long	Short Races	Avg Short	Overall Avg
STARTER ALLOWANCE										
	STR/ALW10000	6	38	125,400	0.39	1	6.00	5	6.40	6.33
	STR/ALW4000	6	38	96,000	0.39	3	6.00	3	6.67	6.33
	STR/ALW5000	18	113	273,600	1.05	8	7.13	8	7.00	7.06
	STR/ALW6250	8	52	144,800	0.52	2	6.50	6	5.83	6.50
	STR/ALW8000	5	32	100,000	0.33	5	6.40	0	0.00	6.40
	All STR Classes	41	273	739,800	2.68	19	6.84	22	6.50	6.66
	All Races	1524	11444	29,225,950	100.00	649	7.50	875	7.52	7.51

	<u>Allowance</u>	<u>Allowance Opt. CLM</u>	<u>Starter Allowance</u>	<u>Claiming 5000 & Less</u>	<u>Claiming 5000 & Greater</u>	<u>Maiden Claiming</u>	<u>Maiden</u>	<u>All Stakes/Handicaps</u>	<u>TOTALS</u>
2007									
# of Races	76	23	37	858	212	295	62	6	1569
% of All Races	4.84%	1.47%	2.36%	54.68%	13.51%	18.80%	3.95%	0.38%	
# of Starters	583	149	257	7021	1635	2440	465	38	12588
Avg. Field Size	7.67	6.48	6.95	8.18	7.71	8.27	7.50	6.33	8.02
Total Purses	\$1,157,800	\$391,200	\$396,800	\$5,843,300	\$2,345,500	\$2,259,400	\$904,900	\$275,000	\$13,573,900
% of All Purses	8.53%	2.88%	2.92%	43.05%	17.28%	16.65%	6.67%	2.03%	
Avg. Purse Per Race	\$15,234	\$17,009	\$10,724	\$6,810	\$11,064	\$7,659	\$14,595	\$45,833	\$8,651
% of Total Races	4.84%	1.47%	2.36%	54.68%	13.51%	18.80%	3.95%	0.38%	
# PA Bred Races	1	0	0	10	3	15	0	5	34
% PA Bred Races	1.32%	0.00%	0.00%	1.17%	1.42%	5.08%	0.00%	83.33%	2.17%

	<u>Allowance</u>	<u>Allowance Opt. CLM</u>	<u>Starter Allowance</u>	<u>Claiming 5000 & Less</u>	<u>Claiming 5000 & Greater</u>	<u>Maiden Claiming</u>	<u>Maiden</u>	<u>All Stakes/Handicaps</u>	<u>TOTALS</u>
2008									
# of Races	77	35	28	658	326	349	84	16	1573
% of All Races	4.90%	2.23%	1.78%	41.83%	20.72%	22.19%	5.34%	1.02%	
# of Starters	592	247	199	6036	2519	2992	631	96	13312
Avg. Field Size	7.69	7.06	7.11	9.17	7.73	8.57	7.51	6.00	8.46
Total Purses	\$1,731,000	\$820,200	\$448,700	\$6,810,400	\$5,175,200	\$4,326,300	\$1,777,000	\$1,150,000	\$22,238,800
% of All Purses	7.78%	3.69%	2.02%	30.62%	23.27%	19.45%	7.99%	5.17%	
Avg. Purse Per Race	\$22,481	\$23,434	\$16,025	\$10,350	\$15,875	\$12,396	\$21,155	\$71,875	\$14,138
% of Total Races	4.90%	2.23%	1.78%	41.83%	20.72%	22.19%	5.34%	1.02%	
# PA Bred Races	7	0	0	7	5	26	22	8	75
% PA Bred Races	9.09%	0.00%	0.00%	1.06%	1.53%	7.45%	26.19%	50.00%	4.77%

	<u>Allowance</u>	<u>Allowance Opt. CLM</u>	<u>Starter Allowance</u>	<u>Claiming 5000 & Less</u>	<u>Claiming 5000 & Greater</u>	<u>Maiden Claiming</u>	<u>Maiden</u>	<u>All Stakes/Handicaps</u>	<u>TOTALS</u>
2009									
# of Races	119	64	42	687	419	419	93	15	1858
% of All Races	6.40%	3.44%	2.26%	36.98%	22.55%	22.55%	5.01%	0.81%	
# of Starters	953	488	306	6958	3458	3995	761	98	17017
Avg. Field Size	8.01	7.63	7.29	10.13	8.25	9.53	8.18	6.53	9.16
Total Purses	\$4,012,500	\$2,265,800	\$1,078,000	\$8,855,800	\$8,650,900	\$6,964,800	\$2,731,400	\$1,295,000	\$35,854,200
% of All Purses	11.19%	6.32%	3.01%	24.70%	24.13%	19.43%	7.62%	3.61%	
Avg. Purse Per Race	\$33,718	\$35,403	\$25,667	\$12,891	\$20,647	\$16,622	\$29,370	\$86,333	\$19,297
% of Total Races	6.40%	3.44%	2.26%	36.98%	22.55%	22.55%	5.01%	0.81%	
# PA Bred Races	5	0	0	4	6	12	25	2	54
% PA Bred Races	4.20%	0.00%	0.00%	0.58%	1.43%	2.86%	26.88%	13.33%	2.91%

	<u>Allowance</u>	<u>Allowance Opt. CLM</u>	<u>Starter Allowance</u>	<u>Claiming 5000 & Less</u>	<u>Claiming 5000 & Greater</u>	<u>Maiden Claiming</u>	<u>Maiden</u>	<u>All Stakes/Handicaps</u>	<u>TOTALS</u>
2010									
# of Races	138	65	38	563	428	440	84	15	1771
% of All Races	7.79%	3.67%	2.15%	31.79%	24.17%	24.84%	4.74%	0.85%	
# of Starters	1088	489	269	5270	3388	3835	659	116	15114
Avg. Field Size	7.88	7.52	7.08	9.36	7.92	8.72	7.85	7.73	8.53
Total Purses	\$4,553,000	\$2,254,000	\$863,000	\$7,225,000	\$8,555,000	\$7,106,000	\$2,637,000	\$1,245,000	\$34,438,000
% of All Purses	13.22%	6.55%	2.51%	20.98%	24.84%	20.63%	7.66%	3.62%	
Avg. Purse Per Race	\$32,993	\$34,677	\$22,711	\$12,833	\$19,988	\$16,150	\$31,393	\$83,000	\$19,446
% of Total Races	7.79%	3.67%	2.15%	31.79%	24.17%	24.84%	4.74%	0.85%	
# PA Bred Races	35	0	0	1	22	75	34	7	174
% PA Bred Races	25.36%	0.00%	0.00%	0.18%	5.14%	17.05%	40.48%	46.67%	9.82%

	<u>Allowance</u>	<u>Allowance Opt. CLM</u>	<u>Starter Allowance</u>	<u>Claiming 5000 & Less</u>	<u>Claiming 5000 & Greater</u>	<u>Maiden Claiming</u>	<u>Maiden</u>	<u>All Stakes/Handicaps</u>	<u>TOTALS</u>
2011									
# of Races	167	45	19	196	853	364	107	22	1773
% of All Races	9.42%	2.54%	1.07%	11.05%	48.11%	20.53%	6.03%	1.24%	
# of Starters	1296	312	126	1640	6709	3011	770	165	14029
Avg. Field Size	7.76	6.93	6.63	8.37	7.87	8.27	7.20	7.50	7.91
Total Purses	5,560,000	1,532,000	423,000	2,316,000	13,572,000	5,665,000	3,527,000	2,025,000	34,620,000
% of All Purses	16.06%	4.43%	1.22%	6.69%	39.20%	16.36%	10.19%	5.85%	
Avg. Purse Per Race	33,293	34,044	22,263	11,816	15,911	15,563	32,963	92,045	19,526
% of Total Races	9.42%	2.54%	1.07%	11.05%	48.11%	20.53%	6.03%	1.24%	
# PA Bred Races	45	0	0	0	60	74	48	9	236
% PA Bred Races	26.95%	0.00%	0.00%	0.00%	7.03%	20.33%	44.86%	40.91%	13.31%

	<u>Allowance</u>	<u>Allowance Opt. CLM</u>	<u>Starter Allowance</u>	<u>Claiming Under 5000</u>	<u>Claiming 5000 & Greater</u>	<u>Maiden Claiming</u>	<u>Maiden</u>	<u>All Stakes/Handicaps</u>	<u>TOTALS</u>
2012									
# of Races	148	58	14	195	860	372	101	19	1767
% of All Races	8.38%	3.28%	0.79%	11.04%	48.67%	21.05%	5.72%	1.08%	
# of Starters	1188	420	112	1692	6812	3077	788	126	14215
Avg. Field Size	8.03	7.24	8.00	8.68	7.92	8.27	7.80	6.63	8.04
Total Purses	\$5,474,000	\$2,168,000	\$318,000	\$2,505,000	\$15,737,000	\$6,669,000	\$3,647,000	\$1,975,000	\$38,493,000
% of All Purses	14.22%	5.63%	0.83%	6.51%	40.88%	17.33%	9.47%	5.13%	
Avg. Purse Per Race	\$36,986	\$37,379	\$22,714	\$12,846	\$18,299	\$17,927	\$36,109	\$103,947	\$21,784
% of Total Races	8.38%	3.28%	0.79%	11.04%	48.67%	21.05%	5.72%	1.08%	
# PA Bred Races	51	0	0	0	87	73	53	7	271
% PA Bred Races	34.46%	0.00%	0.00%	0.00%	10.12%	19.62%	52.48%	36.84%	15.34%

2013

	<u>Allowance</u>	<u>Allowance Opt. CLM</u>	<u>Starter Allowance</u>	<u>Claiming Under 5000</u>	<u>Claiming 5000 & Greater</u>	<u>Maiden Claiming</u>	<u>Maiden</u>	<u>All Stakes/Handicaps</u>	<u>TOTALS</u>
# of Races	157	50	26	205	898	334	86	13	1769
% of All Races	8.88%	2.83%	1.47%	11.59%	50.76%	18.88%	4.86%	0.73%	
# of Starters	1252	340	167	1633	6699	2607	662	101	13,461
Avg. Field Size	7.98	6.8	6.42	7.97	7.46	7.81	7.70	7.77	7.61
Total Purses	\$5,180,000	\$1,600,000	\$502,000	\$2,421,000	\$14,192,000	\$5,228,000	\$2,850,000	1865000	\$33,838,000
% of All Purses	15%	5%	1%	7%	42%	15%	8%	6%	
Avg. Purse Per Race	\$32,994	\$32,000	\$19,308	\$11,810	\$15,804	\$15,653	\$33,140	\$143,462	\$19,128
% of Total Races	8.88%	2.83%	1.47%	11.59%	50.76%	18.88%	4.86%	0.73%	
# PA Bred Races	73	0	0	0	66	84	52	2	277
% PA Bred Races	46.50%	0.00%	0.00%	0.00%	7.35%	25.15%	60.47%	15.38%	15.66%

2014	<u>Allowance</u>		<u>Starter</u>	<u>Claiming</u>	<u>Claiming</u>	<u>Maiden</u>	<u>All</u>		<u>TOTALS</u>
	<u>Allowance</u>	<u>Opt. CLM</u>	<u>Allowance</u>	<u>Under 5000</u>	<u>5000 & Greater</u>	<u>Claiming</u>	<u>Maiden</u>	<u>Stakes/Handicaps</u>	
# of Races	158	54	34	182	849	290	89	13	1669
% of All Races	9.48%	3.24%	2.03%	10.90%	50.85%	17.40%	5.33%	0.77%	
# of Starters	1174	369	235	1355	6027	2078	683	89	12010
Avg. Field Size	7.43	6.83	6.91	7.44	7.1	7.17	7.68	6.84	7.2
Total Purses	\$4,905,100	\$1,643,600	\$641,000	\$2,018,500	\$12,992,800	\$4,349,000	\$2,839,300	\$1,625,000	\$31,014,300
% of All Purses	15.82%	5.30%	2.07%	6.51%	41.89%	14.02%	9.15%	5.24%	
Avg. Purse Per Race	\$31,045	\$30,437	\$18,853	\$11,091	\$15,304	\$14,997	\$31,902	\$125,000	\$18,583
% of Total Races	9.48%	3.24%	2.03%	10.90%	50.85%	17.40%	5.33%	0.77%	
# PA Bred Races	64	0	0	0	92	68	55	5	284
% PA Bred Races	40.51%	0.00%	0.00%	0.00%	10.84%	23.45%	61.80%	38.46%	17.02%

2015	<u>Allowance</u>		<u>Starter</u>	<u>Claiming</u>	<u>Claiming</u>	<u>Maiden</u>	<u>All</u>		<u>TOTALS</u>
	<u>Allowance</u>	<u>Opt. CLM</u>	<u>Allowance</u>	<u>Under 5000</u>	<u>5000 & Greater</u>	<u>Claiming</u>	<u>Maiden</u>	<u>Stakes/Handicaps</u>	
# of Races	137	75	20	173	732	247	89	11	1485
% of All Races	9.21%	5.12%	1.35%	11.64%	49.32%	16.63%	5.99%	0.74%	
# of Starters	1038	518	130	1371	5478	1865	643	88	11131
Avg. Field Size	7.58	6.81	6.50	7.92	7.48	7.55	7.22	8.00	7.50
Total Purses	\$4,332,450	\$2,320,400	\$370,200	\$2,044,300	\$11,125,000	\$3,737,700	\$2,767,800	\$1,675,000	\$28,372,850
% of All Purses	15.27%	8.18%	1.30%	7.21%	39.21%	13.17%	9.76%	5.90%	
Avg. Purse Per Race	\$31,624	\$30,532	\$18,510	\$11,817	\$15,198	\$15,132	\$31,099	\$152,273	\$19,106
% of Total Races	9.21%	5.12%	1.35%	11.64%	49.32%	16.63%	5.99%	0.74%	
# PA Bred Races	60	0	0	0	40	45	36	5	186
% PA Bred Races	43.80%	0.00%	0.00%	0.00%	5.46%	18.22%	40.45%	45.45%	12.53%

2016	<u>Allowance</u>	<u>Allowance</u> <u>Opt. CLM</u>	<u>Starter</u> <u>Allowance</u>	<u>Claiming</u> <u>Under 5000</u>	<u>Claiming</u> <u>5000 & Greater</u>	<u>Maiden</u> <u>Claiming</u>	<u>Maiden</u>	<u>All</u> <u>Stakes/Handicaps</u>	<u>TOTALS</u>
# of Races	156	65	41	197	718	236	100	11	1524
% of All Races	9.21%	5.12%	1.35%	11.64%	49.32%	16.63%	5.99%	0.74%	
# of Starters	1169	455	273	1608	5313	1788	745	93	11444
Avg. Field Size	7.58	6.81	6.66	8.16	7.40	7.58	7.45	8.45	7.50
Total Purses	\$4,927,000	\$1,977,000	\$739,800	\$2,178,900	\$10,959,050	\$3,408,500	\$3,185,700	\$1,850,000	\$29,225,950
% of All Purses	16.86%	6.76%	2.53%	7.46%	37.50%	11.66%	10.90%	6.33%	
Avg. Purse Per Race	\$31,583	\$30,415	\$18,044	\$11,060	\$15,263	\$14,443	\$31,857	\$168,182	\$19,177
% of Total Races	9.21%	5.12%	1.35%	11.64%	49.32%	16.63%	5.99%	0.74%	
# PA Bred Races	69	0	0	0	20	42	64	5	200
% PA Bred Races	44.23%	0.00%	0.00%	0.00%	2.79%	17.80%	64.00%	45.45%	13.12%

	<u>Allowance</u>	<u>Allowance</u> <u>Opt. CLM</u>	<u>Starter</u> <u>Allowance</u>	<u>Claiming</u> <u>5000 & Less</u>	<u>Claiming</u> <u>5000 & Greater</u>	<u>Maiden</u> <u>Claiming</u>	<u>Maiden</u>	<u>All</u> <u>Stakes/Handicaps</u>	<u>TOTALS</u>
% Changes 2007-2016									
# of Races	105.26%	182.61%	10.81%	-77.04%	238.68%	-20.00%	61.29%	83.33%	-2.87%
# of Starters	100.51%	205.37%	6.23%	-77.10%	224.95%	-26.72%	60.22%	144.74%	-9.09%
Avg. Field Size	-1.19%	5.12%	-4.14%	-0.25%	-4.05%	-8.40%	-0.67%	33.49%	-6.52%
Total Purses	325.55%	405.37%	86.44%	-62.71%	367.24%	50.86%	252.05%	572.73%	115.31%
Avg. Purse Per Race	107.32%	78.82%	68.25%	62.41%	37.96%	88.57%	118.27%	266.94%	121.67%
# PA Bred Races	6800.00%	#DIV/0!	#DIV/0!	-100.00%	566.67%	180.00%	#DIV/0!	0.00%	488.24%

CLAIMING ACTIVITY

	<u># of Claims</u>	<u>\$ Amount of Claims</u>	<u>Avg. Claim Amount</u>
2007	219	\$1,135,750	\$5,186
2008	269	\$1,816,000	\$6,751
2009	408	\$3,058,000	\$7,495
2010	508	\$3,669,350	\$7,223
2011	546	\$4,159,250	\$7,618
2012	608	\$4,825,250	\$7,936
2013	665	\$5,484,500	\$8,247
2014	572	\$4,877,250	\$8,527
2015	460	\$3,889,000	\$8,454
2016	420	\$3,405,250	\$8,108

PA VS. NON-PA RESIDENCE ACCOUNTS

Jockeys	2007			2008			2009		
	<u>Accounts</u>	<u>Earnings</u>	<u>% of Total</u>	<u>Accounts</u>	<u>Earnings</u>	<u>% of Total</u>	<u>Accounts</u>	<u>Earnings</u>	<u>% of Total</u>
PA Address	89	\$ 1,291,074	90.00%	80	\$ 1,837,498	82.17%	116	\$ 2,627,374	72.03%
Non-PA Address	48	\$ 143,382	10.00%	122	\$ 398,642	17.83%	128	\$ 1,020,433	27.97%
Total	137	\$ 1,434,456	100.00%	202	\$ 2,236,140	100.00%	244	\$ 3,647,807	100.00%
	2010			2011			2012		
	<u>Accounts</u>	<u>Earnings</u>	<u>% of Total</u>	<u>Accounts</u>	<u>Earnings</u>	<u>% of Total</u>	<u>Accounts</u>	<u>Earnings</u>	<u>% of Total</u>
PA Address	99	\$2,321,556	67.94%	106	\$2,624,920	77.57%	105	\$3,023,740	81.37%
Non-PA Address	181	\$1,095,445	32.06%	170	\$759,065	22.43%	162	\$683,157	18.38%
Total	280	\$3,417,001	100.00%	276	\$3,383,985	100.00%	267	\$3,715,897	99.76%
	2013			2014			2015		
	<u>Accounts</u>	<u>Earnings</u>	<u>% of Total</u>	<u>Accounts</u>	<u>Earnings</u>	<u>% of Total</u>	<u>Accounts</u>	<u>Earnings</u>	<u>% of Total</u>
PA Address	92	\$2,701,885	81.96%	91	\$2,526,287	84.12%	92	\$ 2,296,415	83.23%
Non-PA Address	157	\$594,654	18.04%	143	\$476,745	15.88%	147	\$ 462,746	16.77%
Total	249	\$3,296,539	100.00%	234	\$3,003,032	100.00%	239	\$ 2,759,161	100.00%
	2016								
	<u>Accounts</u>	<u>Earnings</u>	<u>% of Total</u>						
PA Address	91	\$ 2,228,325.76	78.85%						
Non-PA Address	139	\$ 597,626.41	21.15%						
Total	230	\$ 2,825,952.17	100.00%						

OWNERS-TRAINERS

2007

	<u>Accounts</u>	<u>Earnings</u>	<u>% of Total</u>
PA Address	645	\$ 8,271,989	56.02%
Non-PA Address	985	\$ 6,493,590	43.98%
Total	1630	\$ 14,765,579	100.00%

2008

	<u>Accounts</u>	<u>Earnings</u>	<u>% of Total</u>
PA Address	655	\$ 10,533,693	47.81%
Non-PA Address	1124	\$ 11,498,740	52.19%
Total	1779	\$ 22,032,433	100.00%

2009

	<u>Accounts</u>	<u>Earnings</u>	<u>% of Total</u>
PA Address	689	\$ 13,907,314	38.96%
Non-PA Address	1384	\$ 21,787,359	61.04%
Total	2073	\$ 35,694,673	100.00%

2010

	<u>Accounts</u>	<u>Earnings</u>	<u>% of Total</u>
PA Address	843	\$15,677,213	42.84%
Non-PA Address	2041	\$20,914,923	57.16%
Total	2884	\$36,592,136	100.00%

2011

	<u>Accounts</u>	<u>Earnings</u>	<u>% of Total</u>
PA Address	828	\$18,063,533	48.73%
Non-PA Address	1818	\$19,003,309	51.27%
Total	2646	\$37,066,842	100.00%

2012

	<u>Accounts</u>	<u>Earnings</u>	<u>% of Total</u>
PA Address	773	\$18,802,362	45.80%
Non-PA Address	1798	\$22,249,707	54.20%
Total	2571	\$41,052,069	100.00%

2013

	<u>Accounts</u>	<u>Earnings</u>	<u>% of Total</u>
PA Address	747	\$17,129,984	47.64%
Non-PA Address	1505	\$18,827,505	52.36%
Total	2252	\$35,957,489	100.00%

2014

	<u>Accounts</u>	<u>Earnings</u>	<u>% of Total</u>
PA Address	718	\$17,043,565	51.08%
Non-PA Address	1423	\$16,321,685	48.92%
Total	2141	\$33,365,250	100.00%

2015

	<u>Accounts</u>	<u>Earnings</u>	<u>% of Total</u>
PA Address	685	\$ 15,398,675	50.27%
Non-PA Address	1371	\$ 15,235,555	49.73%
Total	2056	\$ 30,634,230	100.00%

2016

	<u>Accounts</u>	<u>Earnings</u>	<u>% of Total</u>
PA Address	700	\$ 15,213,878.00	48.73%
Non-PA Address	1365	\$ 16,005,924.90	51.27%
Total	2065	\$ 31,219,802.90	100.00%

2016 Penn National Residence Analysis

	Num Accts	2016 Purse Earnings	%
Owner/Trainer	2,022	30,625,657.90	88.07%
Non PA Resident	1,336	15,826,394.10	58.19%
PA Resident	686	14,799,263.80	29.88%
Jockey	230	2,825,952.17	10.02%
Non PA Resident	139	597,626.41	6.05%
PA Resident	91	2,228,325.76	3.96%
Owner	43	593,881.20	1.87%
Non PA Resident	29	179,267.00	1.26%
PA Resident	14	414,614.20	0.61%
Trainer	1	0.00	0.04%
Non PA Resident	1	0.00	0.04%
Grand Total	2,296	34,045,491.27	100.00%

The RTO System uses data from a variety of sources including, without limitation, data that are inputted by various racetracks, and Jockey Club and/or Equibase Company LLC. All data rights are reserved by the owners thereof. Data provided or compiled by InCom but occasionally errors and omissions occur as a result of incorrect data received from others, mistakes in processing and other representations or warranties, expressed or implied, including those of merchantability, accuracy, timeliness or fitness for a particular including but not limited to, the accuracy of any information contained herein. Use (including viewing) of the material contained hereof is at the user's own risk. Use (including viewing) of the material contained hereof is at the user's own risk. Use (including viewing) of the material contained hereof is at the user's own risk. DATA CONTRIBUTORS TO THE RTO SYSTEM, INCLUDING, WITHOUT LIMITATION, INCOMPASS SOLUTIONS COMPANY LLC, AND THE VARIOUS CONTRIBUTING RACETRACKS SHALL NOT HAVE ANY RESPONSIBILITY OR LIABILITY ARISING FROM OR OUT OF THE USE OF THE MATERIAL CONTAINED HEREIN.